

LAND CORNER RECORDATION CERTIFICATE
Filing Requirement of Act 74, Mich. P.A. 1970

For corners in
GLADWIN
(County)

Located In: _____ Corner Code #/

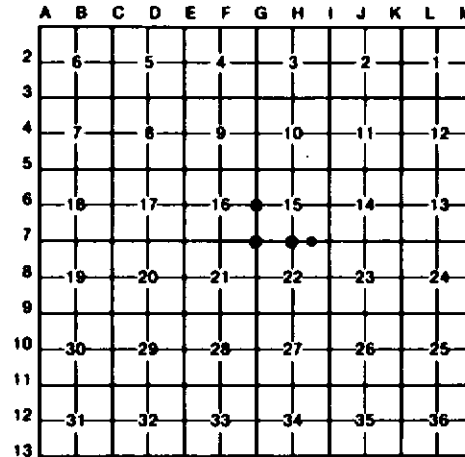
1. Public Land Survey	T <u>18N</u> R <u>2E</u>	<u>G-6, G-7,</u>
	T _____ R _____	<u>H-7</u>
	T _____ R _____	_____
	T _____ R _____	_____
2. Property Controlling in Section	S <u>22</u> T _____ R _____	<u>2</u>
	S _____ T _____ R _____	_____
3. Miscellaneous Property in Sec.	S _____ T _____ R _____	_____
	S _____ T _____ R _____	_____

Register of Deeds Stamp & File Number

4. Lot No. _____, Recorded Plat _____
 5. Private Claims _____

I, C.T. KIISKILA, in a field survey on JULY 13, 1994, do hereby certify that under requirements of P.A. 74, Michigan P.A. of 1970, the corner points mentioned in lines 1 and 2 above were in conformance with regulations and rules therefore as required in the current manual of survey instructions of the United States Department of the Interior, Bureau of Land Management or by a decree of a Court of Law and/or that the corner points mentioned in lines 3, 4 and 5 above were in conformance with the rules of the Michigan Board of Land Surveyors or by a Decree of a Court of Law; established, re-established, monumented, re-monumented, recovered, found as expressed below:

NOTE: Not more than 4 corners, all in the same town and range, may be recorded on this certificate.



A. Description of original monument and accessories and/or subsequent restoration:

(NO CONCLUSIVE EVIDENCE OF G.L.O. CORNER MONUMENT, CORNER BT'S, LINE TREES, TOPOGRAPHY, ETC. AS CALLED OUT IN THE G.L.O. LINE NOTES; UNLESS NOTED IN ITEM "B" BELOW.)



B. Description of corner evidence found and/or method applied in restoring or reestablishing corner:

6-6 REESTABLISHED E 1/4 COR SEC 16 ON LINE ACROSS CALC W 1/4 CORNER SEC 16 & CTR OF SEC 16 PER P.S. J. MEYERS SURVEY DATA. WINDING TRAIL N'LY & SE'LY IS N45 E, 97'±.	6-7 REESTABLISHED SW COR SEC 15 PER P.S. J. MEYERS SURVEY DATA IN SEC 16 (COR SET DOUBLE DOWN CALC E 1/4 & NE CORN OF SEC 16 PER J. MEYERS RETRACEMENT SRVEY DATA). N-S WINDING TRAIL IS 69'± 7' EAST.	H-7 REESTABLISHED S 1/4 COR SEC 15 MIDWAY & ON LINE BETW FD SE COR SEC 15 & REESTABLISHED SW COR SEC 15. CTR OF N-S TRAIL IS 204'± E & CTR E-W WINDING TRAIL IS NORTH 118'±.	2 ESTABLISHED NE COR OF NW 1/4 OF NE 1/4 OF SEC 22 PER STANDARD BLM INSTRUCTIONS. E-W WINDING TRAIL IS 197'± NORTH. CENTER OF TRAIL, NW-SE IS 422' EAST.
---	--	--	--

C. Description of monument for corner and accessories established to perpetuate locating the position of the corner:

6-6 SET DNR MON & CED POST 7" J PINE N70°W 62.0' 12" MAPLE (CLP3) N25°E 18.2' 11" OAK S75°E 37.7' 10" B OAK S05°W 44.4'	6-7 SET DNR MON & CED POST. 3" MAPLE N65°W 65.9' 4" W PINE N50°E 3.3' 2" MAPLE S80°E 15.7' 9" MAPLE S55°W 72.1'	H-7 SET DNR MON & CED POST. 6" J PINE N35°W 14.6' 6" J PINE N45°E 16.1' 6" J PINE S10°E 3.9' 3" J PINE S70°W 10.3'	2 DROVE 5/8" X 34" REROD W/RLS CAP. SET CED POST W/LDC TAG. 5" B OAK N40°W 22.6' 7" MAPLE NORTH 21.5' 9" B OAK N75°E 21.6' 6" J PINE S40°E 23.5'
---	---	--	--

Signed by Carl T. Kiiskila Date 3-28-97

Surveyor's Michigan License No. 33981