

LAND CORNER RECORDATION CERTIFICATE
Filing Requirement of Act 74, Mich. P.A. 1970

For corners in
GLADWIN

(County)

Located In:

Corner Code ~~≠~~

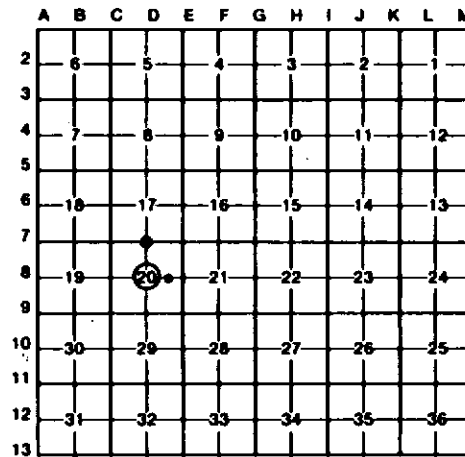
1. Public Land Survey	T <u>18N</u> R <u>2E</u>	<u>D-7, D-8</u>
	T _____ R _____	_____
	T _____ R _____	_____
	T _____ R _____	_____
2. Property Controlling in Section	S <u>20</u> T _____ R _____	<u>9</u>
	S _____ T _____ R _____	_____
3. Miscellaneous Property in Sec.	S _____ T _____ R _____	_____
	S _____ T _____ R _____	_____

Register of Deeds Stamp & File Number

4. Lot No. _____, Recorded Plat _____
 5. Private Claims _____

I, CARL T. KIISKILA, in a field survey on MARCH 20, 19 97, do hereby certify that under requirements of P.A. 74, Michigan P.A. of 1970, the corner points mentioned in lines 1 and 2 above were in conformance with regulations and rules therefore as required in the current manual of survey instructions of the United States Department of the Interior, Bureau of Land Management or by a decree of a Court of Law and/or that the corner points mentioned in lines 3, 4 and 5 above were in conformance with the rules of the Michigan Board of Land Surveyors or by a Decree of a Court of Law; established, re-established, monumented, re-monumented, recovered, found as expressed below:

NOTE: Not more than 4 corners, all in the same town and range, may be recorded on this certificate.



A. Description of original monument and accessories and/or subsequent restoration:

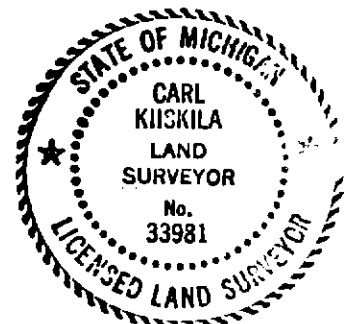
D-7 D-8 9
 (NO CONCLUSIVE EVIDENCE OF G.L.O. CORNER MONUMENT, CORNER BT'S, LINE TREES, TOPOGRAPHY, ETC. AS CALLED OUT IN THE G.L.O. LINE NOTES; UNLESS NOTED IN ITEM "B" BELOW.)

B. Description of corner evidence found and/or method applied in restoring or reestablishing corner:

<u>D-7</u> REESTABLISHED THE NW 1/4 CORNER OF SEC. 20 MIDWAY AND ON LINE BETWEEN FOUND NW COR OF S-20 AND REESTABLISHED NE COR OF S-20. SINGLE STRAND OF SMOOTH WIRE, IN TREES, RUNS EAST 38' NORTH AND RUNS SOUTH 65' WEST.	<u>D-8</u> ESTABLISHED THE CENTER OF S-20 AT INTERSECTION OF 1/4 LINES. CORNER OF OLDER 4' STRAND B/WIRE ON CEDAR POSTS (FENCE S & W) IS 12' SOUTH AND 32' WEST.	<u>9</u> ESTABLISHED THE NE CORNER OF THE NW 1/4 OF SE 1/4 OF SEC 20 PER STANDARD BLM INSTRUCTIONS. E-W WINDING SINGLE STRAND OF SMOOTH WIRE IN TREES IS 48'+/- NORTH.
---	---	---

C. Description of monument for corner and accessories established to perpetuate locating the position of the corner:

<u>D-7</u> SET DNR MON & CEDAR POST. 8" TRI. MAPLE N60°W 51.5' 6" W. PINE N18°W 63.5' 5" W. PINE N28°E 32.7' 5" SOFT MAPLE (CLP) S67°W 9.7'	<u>D-8</u> DROVE 1"x 48" GALV. PIPE W/PS CAP & SET CARSONITE POST W/LOC TAG. 15" OAK N85°W 14.39' 3" SOFT MAPLE N55°E 7.21' 5" SOFT MAPLE (CLP) S82°E 15.74' 5" TW. SOFT MAPLE S20°W 8.48'	<u>9</u> DROVE 5/8"x 34" REROD W/PS CAP & SET CARSONITE POST W/LOC TAG. 8" W. PINE N35°W 46.40' 21" TW. OAK DUE EAST 50.85' 8" W. PINE S16°E 66.20' 9" W. PINE S60°W 91.54'
	DROVE NAIL AND TAG ON SIDE OF ALL WIT. TREES.	DROVE NAIL & TAG ON SIDE OF ALL WIT TREES.



Signed by Carl T. Kiiskila Date 3-28-97
 Surveyor's Michigan License No. 33981