

LAND CORNER RECORDATION CERTIFICATE
Filing Requirement of Act 74, Mich. P.A. 1970

For corners in GLADWIN (County) Located In: _____ Corner Code # _____

1. Public Land Survey T 18N R 2E _____ E-7, E-8
 T _____ R _____
 T _____ R _____
 T _____ R _____

2. Property Controlling S 16 T _____ R _____ 10, 12
 in Section S _____ T _____ R _____

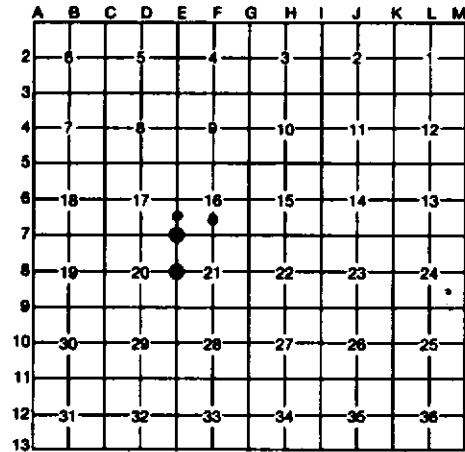
3. Miscellaneous S _____ T _____ R _____
 Property in Section S _____ T _____ R _____

Register of Deeds Stamp & File Number

4. Lot No. _____, Recorded Plat _____
 5. Private Claims _____

I, C.T. KIISKILA, in a field survey on JULY 26, 19 94, do hereby certify that under requirements of P.A. 74, Michigan P.A. of 1970, the corner points mentioned in lines 1 and 2 above were in conformance with regulations and rules therefore as required in the current manual of survey instructions of the United States Department of the Interior, Bureau of Land Management or by a decree of a Court of Law and/or that the corner points mentioned in lines 3, 4 and 5 above were in conformance with the rules of the Michigan Board of Professional Surveyors or by a Decree of a Court of Law; established, re-established, monumented, re-monumented, recovered, found as expressed below:

NOTE: Not more than 4 corners, all in the same town and range, may be recorded on this certificate.



A. Description of original monument and accessories and/or subsequent restoration:

E-7	E-8	10
-----	-----	----

(NO CONCLUSIVE EVIDENCE OF G.L.O. CORNER MONUMENT, CORNER BT'S, LINE TREES, TOPOGRAPHY, ETC. AS CALLED OUT IN THE G.L.O. LINE NOTES; UNLESS NOTED IN ITEM "B" BELOW.)



B. Description of corner evidence found and/or method applied in restoring or reestablishing corner:

E-7	E-8	10	12
REESTABLISHED SW COR OF SEC 16 DOUBLE BOUND NW & N 1/4 COR OF SEC 16 PER J. MEYERS SURVEY DATA. E-W SINGLE B.WIRE FN IS 101' +/- N (FN GOES N FROM THIS E-W B.WIRE, 212' +/- WEST OF SEC COR.) SINGLE STRAND OF N-S SMOOTH WIRE IS 132' +/- EAST.	REESTABLISHED N 1/4 COR SEC 21 MIDWAY & ON LINE BETWEEN NW & SW COR'S OF S 21. FN COR, SINGLE STRAND OF WIRE (RUNS SSW & NE), IS 50' +/- NORTH. WEST EDGE OF SWAMP IS 20' +/- EAST.	ESTABLISHED SW COR OF NW 1/4 OF SW 1/4 S 16 PER STANDARD BLM INSTRUCTIONS. FN COR (FN E & S) IS 87' +/- N & 240' +/- WEST.	ESTABLISHED SW COR, NW 1/4 OF SE 1/4, SEC 16 PER STANDARD BLM INSTRUCTIONS. CTR OF WINDING TRAIL E'LY IS 427' +/- 7' NORTH & TRAIL S'LY IS 179' +/- 4' WEST.

C. Description of monument for corner and accessories established to perpetuate locating the position of the corner:

E-7	E-8	10	12
SET DNR NON W/CED POST.	SET DNR NON & CED POST.	SET 5/8" X 34" REROD W/ CAP & CED POST.	DROVE 5/8" X 34" REROD W/RLS CAP & SET CED POST W/LOC TAG.
7" MAPLE N81°E 8.5'	7" MAPLE N55°E 28.9'	7-10" TH MAPLE N66°W 20.4'	6" MAPLE N05°W 43.4'
5" CEDAR S28°E 11.6'	12" MAPLE S27°E 15.2'	7" MAPLE N30°E 15.0'	2" MAPLE S45°E 23.3'
10" CEDAR S42°W 19.7'	10" MAPLE S08°W 21.2'	8" TH MAPLE S42°E 34.8'	2" MAPLE S05°E 27.5'
8" QUAD MAPLE N52°W 10.9'	14" CEDAR S67°E 24.5'	18" OAK S19°W 28.3'	10" MAPLE CLP N80°W 48.0'
		E-W SINGLE WIRE FN NORTH 87'	ANGLE IR & PIPE GATE S75°W 196' +/- 6'

Signed by Carl T. Kiiskila Date 3-28-97