

LAND CORNER RECORDATION CERTIFICATE
Filing Requirement of Act 74, Mich. P.A. 1970

For corners in
GLADWIN

Located In: Corner Code *11*

- | | | |
|------------------------------------|-------------------------|-------|
| 1. Public Land Survey | T 18N R 2E | B-3 |
| | T _____ R _____ | _____ |
| | T _____ R _____ | _____ |
| | T _____ R _____ | _____ |
| 2. Property Controlling in Section | S 7 T _____ R _____ | 11 |
| | S _____ T _____ R _____ | _____ |
| 3. Miscellaneous Property in Sec. | S T R | |
| | S T R | |
| 4. Lot No. _____, Recorded Plat | | |
| 5. Private Claims _____ | | |

Register of Deeds Stamp & File Number

I, CARL T. KIISKILA, in a field survey on JANUARY 27, 19 97, do hereby certify that under requirements of P.A. 74, Michigan P.A. of 1970, the corner points mentioned in lines 1 and 2 above were in conformance with regulations and rules therefore as required in the current manual of survey instructions of the United States Department of the Interior, Bureau of Land Management or by a decree of a Court of Law and/or that the corner points mentioned in lines 3, 4 and 5 above were in conformance with the rules of the Michigan Board of Land Surveyors or by a Decree of a Court of Law; established, re-established, monumented, re-monumented, recovered, found as expressed below:

NOTE: Not more than 4 corners, all in the same town and range, may be recorded on this certificate.

A. Description of original monument and accessories and/or subsequent restoration:

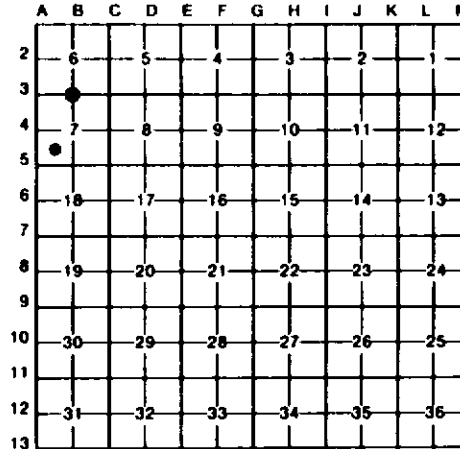
B-3
 U.S. G.L.O. - SET OR. SECTION POST; W.PINE 18 N79°E 17, Y.PINE 16 S45°E 18. NO SIGN OF POST OR WIT.

B. Description of corner evidence found and/or method applied in restoring or reestablishing corner:

B-3 REESTABLISHED N1/4 COR OF S-7 ON LINE BETWEEN FD SEC COR'S 1/2 MILE TO E & W AND AT PRORATED DIST. TO U.S. G.L.O. RUN OUT. THIS POSITION FITS US TIE TO STREAM TO EAST; US = 1604', WE MEAS 1588'+/- TO EAST EDGE OF STREAM.	11 ESTABLISHED THE CTR. OF SW1/4 OF S-7 PER STANDARD BLM INSTRUCTIONS. N-S W/WIRE FENCE ON CEDAR POSTS IS 21'+/- WEST AND OLD FENCE N'LY IS 28'+/- NORTH.
---	--

C. Description of monument for corner and accessories established to perpetuate locating the position of the corner:

B-3 SET BNR MON & CEDAR POST. 5° OAK N15°E 111.83' 5° OAK S60°E 140.94' 3° MAPLE S15°E 98.75' 6° OAK S40°W 67.87'	11 DROVE 1"x 60" GALV. PIPE W/PS CAP & SET BLUE CARSONITE POST W/LOC TAG. 8° OAK N33°W 46.31' (DROVE SPIKE & TAG NE SIDE) POWER POLE N23°E 18.86' (DROVE PK NAIL & TAG NE SIDE) 12" J.PINE N42°E 28.79' (DROVE SPIKE & TAG NW SIDE) 6° OAK S65°W 49.64' (DROVE SPIKE & TAG NW SIDE) N-S POWER POLE LINE WEST 7'
--	--



Signed by Carl T. Kiiskila Date 4-7-97
 Surveyor's Michigan License No. 33981