

SURVEY  
REMONUMENTATION

DEC 1 8 1996

COMMISSIONER

GLADWIN COUNTY REMONUMENTATION

LAND CORNER RECORDATION CERTIFICATE  
Filing Requirement of Act 74, Mich. P.A. 1970

LIBER 001 PAGE 120

For corners in

GLADWIN (County)	Located In:	Corner Code #
1. Public Land Survey	T 20N R 1E	G - 3
	T R	
	T R	
	T R	
2. Property Controlling in Section	S T R	
	S T R	
3. Miscellaneous Property in Sec.	S T R	
	S T R	

STATE OF MICHIGAN  
GLADWIN COUNTY  
FILED-REMONUMENTATION

2 DEC 96 3:27 P.M.

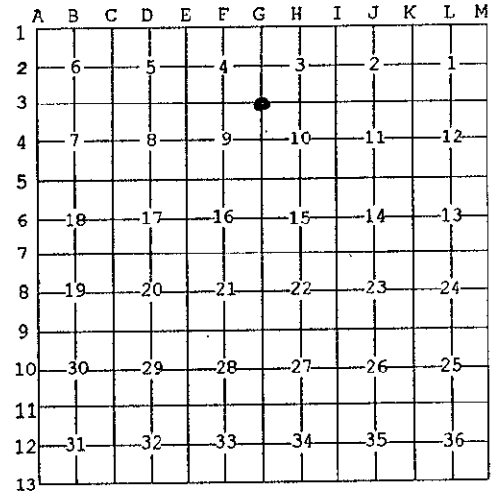
BONNIE K. HOUSE  
REGISTER OF DEEDS

Register of Deeds Stamp & File Number

4. Lot No. \_\_\_\_\_, Recorded Plat \_\_\_\_\_  
5. Private Claims \_\_\_\_\_

I, MARK ROBISON, in a field survey on November, 19 96 do hereby state that under requirements of P.A. 74, Michigan P.A. of 1970, the corner points mentioned in lines 1 and 2 above were in conformance with regulations and rules therefore as required in the current manual of survey instructions of the United States Department of the Interior, Bureau of Land Management or by a decree of a Court of Law and/or that the corner points mentioned in lines 3, 4 and 5 above were in conformance with the rules of the Michigan Board of Land Surveyors or by a Decree of a Court of Law; established, re-established, monumented, recovered, found as expressed below:

NOTE: Not more than 2 corners, all in the same town and range, may be recorded on this certificate.



A. Description of original monument and accessories and/or subsequent restoration:

- 1846 JOHN MULLETT SET 1/4 POST WIT.-(1)CEDAR 10" N60W 36 (2)W PINE 14" S48E 29
- 1950 DUNDAS-WORKING DRAWING WIT.-NONE
- 1950 RICHARDSON SURVEY FD 1" PIPE WIT.-(3)P POLE S48W 81.48 (4)TWIN APPLE 7" N33W 44.87 (5)B OAK 10" N30E 51.13
- 1963 HENNING-SEC. SUBD. WIT.-NONE SEE REF. TO CORNER
- 1973 PAUL LAPHAM SURVEY FD 1/2" PIPE WIT.-(6)N30W 44.64 8" TWIN APPLE TREE (7)N30E 51.23 12" OAK (8)S55W 79.88 P POLE
- 1973 PAUL LAPHAM-SECT. SUBD. 1973 PAUL LAPHAM-LCRC #7 WIT.-SAME AS (6),(7)&(8)
- 1975 CAVANAGH SURVEY FD 3/4" PIPE 1978 OSTLING SURVEY FD CORNER REC. LIBER 1 PAGE 330 OF SURVEYS
- 1981 P LAPHAM SVY WIT.-SAME AS (6),(7),&(8)
- 1992 P LAPHAM SVY WIT.-SAME AS (6),(7),&(8)
- 1993 NORSTAR LCRC #353 FOUND PIPE WIT.-(9)N30E 51.48 12" OAK (10)N80W 34.60 CONC. MON. (11)SW 79.86 POWER POLE
- 1994 PAUL LAPHAM SURVEY WIT.-SAME AS (6) & (8) (12)N30E 31.23 CLUMP 4" MAPLES

B. Description of corner evidence found and/or method applied in restoring or reestablishing corner:

NO CORNER FOUND--COUNTY T-ROAD N-S-E. FOUND WITNESSES (5),(7),(8),(9)&(10). FOUND C.I. #17614 33.00' WEST. SET GLADWIN RE-MON FROM FOUND WITNESSES. SEE DOSSIER FOR DETAILED REPORT.

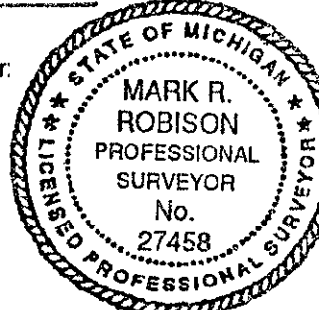
APPROVED LAND CORNER  
P.A. 74 of 1970  
Gladwin County

Co. Rep. [Signature]  
Date 11/6/96

C. Description of monument for corner and accessories established to perpetuate locating the position of the corner:

G-3: CORNER COMMON TO SECTIONS 3, 4, 9, & 10  
SET 5/8" X 3/8" REROD WITH GLADWIN COUNTY RE-MON CAP MARKED P.S.#27458

- WITNESSES:  
N30E 12" OAK, N&T, 51.23'
- S55W P.P., N&T, 79.88'
- N80W CONC. MON 34.60'
- N50W TWIN CEDAR, N&T, 112.15'



Signed by Mark R. Robison  
Surveyor's Michigan License No. 27458

Date 11-29-96