

LAND CORNER RECORDATION CERTIFICATE

Filing Requirement of Act 74, Mich. PA 1970

For Corners In:
Gladwin Located In Corner Code #
 (County)

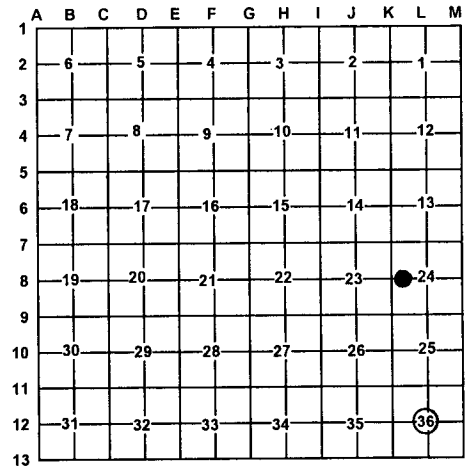
1. Public Land Survey	T	<u>20N</u>	R	<u>2E</u>	<u>L12</u>
	T		R		
2. Property Controlling in Section	S	<u>24</u>	T	<u>20N</u>	R <u>2E</u> <u>8</u>
	S		T		R
3. Miscellaneous Property in Section	S		T		R
	S		T		R

4. Lot No: _____ Recorded Plat: _____
 5. Private Claims: _____

I, Craig W. McVean, in a field survey on Feb. 21, 2006 do hereby state that under requirements of PA 74, Michigan PA of 1970, the corner points mentioned in lines 1 and 2 above were in conformance with regulations and rules therefore as required in the current manual of survey instructions of the United States Department of the Interior, Bureau of Land Management or by a decree of a Court of Law and/or that the corner points mentioned in lines 3, 4 and 5 above were in conformance with the rules of the Michigan Board of Land Surveyors or by a Decree of a Court of Law; established, re-established, monumented, recovered, found as expressed below:

NOTE: Not more than 2 corners, all in the same town and range, may be recorded on this certificate.

Register of Deeds Stamp & File Number



A. Description of original monument and accessories and/or subsequent restoration:
L12 - None 8 - None



B. Description of corner evidence found and/or method applied in restoring or re-establishing corner:
L12 - C 1/4, Section 36-set stamped 2" Aluminum cap on 5/8" x 34" rebar per standard BLM procedure at intersection of 1/4 lines. 8 - CW 1/16, Section 24. Set stamped 2" Aluminum cap on 5/8" x 34" rebar per standard BLM procedure.

C. Description of monument for corner and accessories established to perpetuate locating the position of the corner:
L12 - A stamped 2" Aluminum cap on 5/8" x 34" rebar. Set Blue Carsonite Post 1' SW. East 1.53' to set N & T in NW side twin 13" R. Maple N17°W 5.30' to set N & T in SW side 12" R. Maple S8°W 15.59' to set N & T in W. side 12" R. Maple S58°W 36.91' to set N & T in SE side 2" W. Pine 8 - A stamped 2" Aluminum cap on 5/8" x 34" rebar. Set Blue Carsonite Post w/ loc. tag 1' NW S63°E 22.73' to set N & T in S. side 2" Ash S8°W 46.13' to set N & T in W. side 6" Ash N70°W 10.56' to set N & T in S. side 2" Oak N24°E 22.05' to set N & T in SE side 3" R. Maple

Signed by: Craig W. McVean
 Surveyor's Michigan License No.: 39088

Date: 5/9/2007