

**Chambers & Shelton Subd.**

□ = Fd. Sp. conc. Subd. Mon.  
**A.V. Courtwright**  
 L.S., P.E. # 4672  
 1968 =



Scale: 1" = 60'

Detail of W 1/4 line Sec. 18  
 E-W 1/4 line Sec. 18

South line of Subd. vision is 0.58 N. of 1/4 Cor. 2

6408-M  
 64-R

W 1/4 Cor  
 Sec. 18

T20N-R2W  
 E-OWE 5/8" x 3/4"  
 Fitted from two L.C. Wits.

South line of subdivision  
 243.8 - Meas  
 244 - Rec.

N87°27'52"W

5247.08

E-N 1/4 line Sec. 18

118.2 - Meas  
 118 - Rec

E 1/4 Cor.  
 Sec. 18  
 T20N-R2W  
 Fd. 2" Pipe  
 as fd. by J.M.;  
 fits two of his Wits.

2652.18 - JM  
 2655.08 - GD  
 2658.04 - L.C.  
 2652.19 - G

NW Cor Sec. 18  
 T20N-R2W  
 Fd. 1/2" rod  
 per 2 L.C. wits.



Scale: 1" = 600'  
 Sec. 18, T20N-R2W  
 E-W 1/4 line  
 GLADWIN, Co.

BEARING BASIS IS THE  
 W. LINE OF NW 1/4 OF  
 SECTION 18, PER CERT  
 OF SURVEY, LIBER 001,  
 PAGE 780, L. COVAROCH,  
 SEPT. 14, 1977,  
 (N00°51'36"E).

GT = Computed from Traverse line.  
 Cr = Computed from random line.

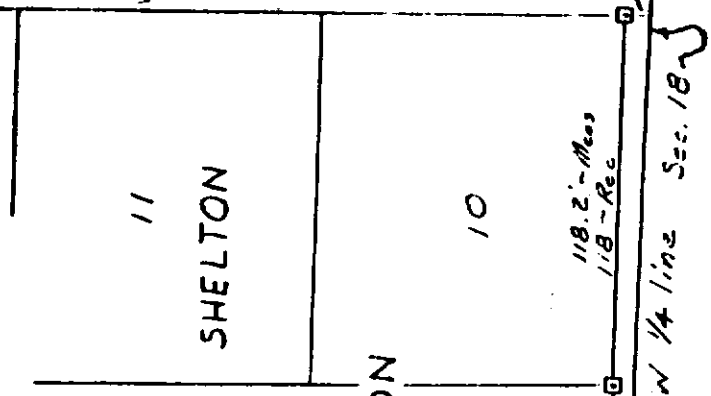
G.D. = G. DeLaMater, RLS #13030  
 L.C. = L. Covaroch, RLS #17614  
 J.M. = J. Meyers, RLS #14099

Mich. Dept. of Natural Resources  
 ENGR - WATER MET. DIV.  
 REGION II  
 Proj. No. 31-9330E  
 FEB. 1986  
 C. Moser, L.S., P.E., #12028  
 Drawn - R.O.H.

E-W 1/4 line Sec. 18

N87°27'52"W 5247.08 - C.  
 5247.02 - J.M.

E 1/4 Cor - Sec. 18  
 T20N-R2W  
 Fd. 2" pipe fits two J.M. Wits



RECEIVED  
 FEB 20 1986