

Chambers & Shelton Subd.

□ = Fed. Sq. conc. Subd. Mon.
 A.V. Courtwright
 L.S., P.E. # 4672
 1968 =

Scale: 1"=60'
 Detail of W 1/4 line Sec. 18
 E-W 1/4 line Sec. 18

South line of
 subdivision is
 0.58 N. of
 1/4 Cor.

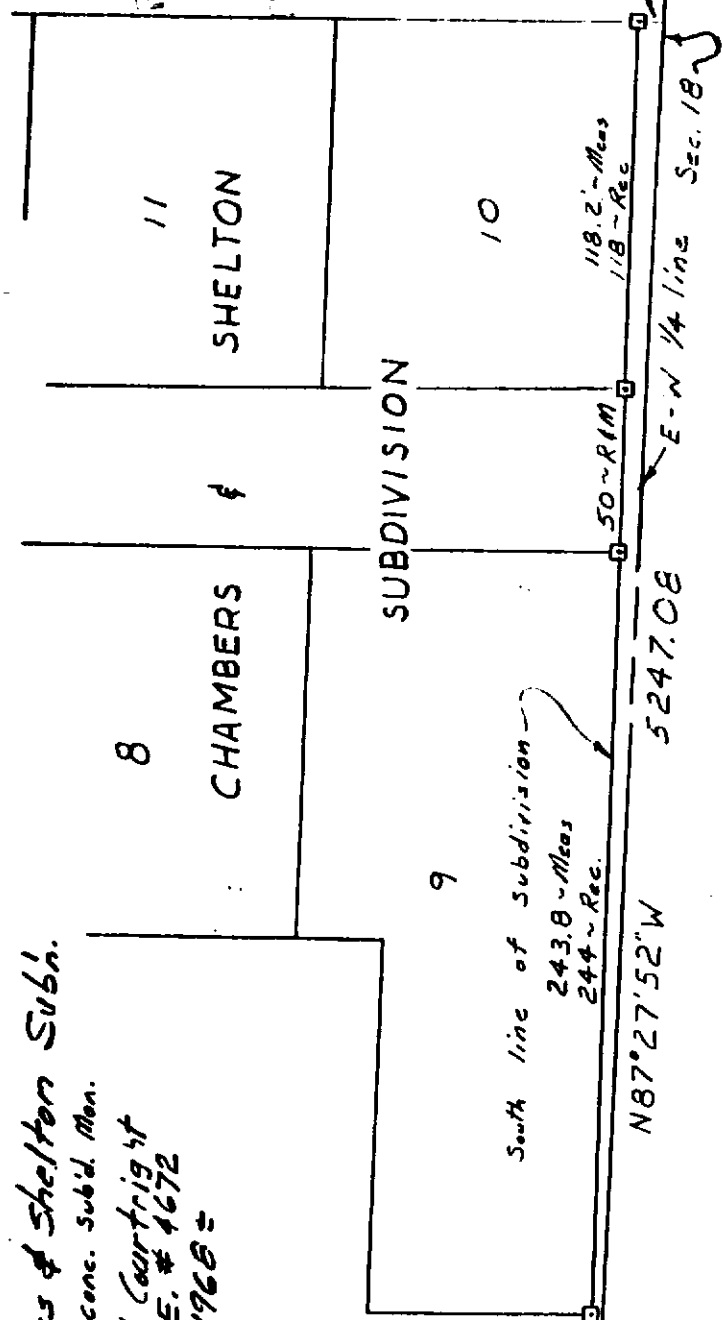
6408-M
 64-R
 W 1/4 Cor
 Sec. 18
 T20N-R2W
 E-OVER 5/8" x 24"
 Fitted from two
 L.C. wits.

NW Cor. Sec. 18
 T20N-R2W
 Fed. 1/2" rod
 per 2 L.C. wits.
 2652.18-5M
 2655.08-GD
 2658.04-L.C.
 N00°51'36"E 2652.19-G
 1940 M.D. 2652.19-5M
 1940 M.D. 2652.19-5M
 1940 M.D. 2652.19-5M

Scale: 1"=600'
 Sec. 18, T20N-R2W
 E-W 1/4 line
 GLADWIN, Co.

BEARING BASIS IS THE
 W. LINE OF NW 1/4 OF
 SECTION 18, PER CERT
 OF SURVEY, LIBER 001,
 PAGE 780, L. COVANOUGH
 SEPT. 14, 1977,
 (N00°51'36"E).

CT = Computed from Traverse line.
 Cr = Computed from random line.
 G.D. = G. DeLaMater, RLS #13030
 L.C. = L. Covanough, RLS #17614
 J.M. = J. Meyers, RLS #14099



RECEIVED
 FEB 20 1986
 DEPARTMENT

E 1/4 Cor.
 Sec. 18
 T20N-R2W
 Fed. 2" Pipe
 AS Fd. by J.M.
 fits two of his wits.

Mich. Dept. of Natural Resources
 ENGR - WATER MGT. DIV.
 REGION II
 Proj. No. 31-9330E
 FEB. 1986
 C. Moser, L.S., P.E., #12028
 DRAWING R.O.H.

E 1/4 Cor - Sec. 18
 T20N-R2W
 Fed. 2" Pipe (fits two J.M. wits)

E-W 1/4 line Sec. 18
 N87°27'52"W 5247.08-Cr
 5247.02-J.M.

W 1/4 Cor - Sec. 18
 T20N-R2W
 Drive 5/8" x 34" Rod
 W/RLS Cap per Two L.C. wits.