

SURVEY & REMONUMENTATION

NOV 12 1997

COMMISSION

LAND CORNER RECORDATION CERTIFICATE
Filing Requirement of Act 74, Mich. P.A. 1970

For corners in

<u>Gogebic</u> (County)	Located In:	Corner Code #
1. Public Land Survey	T43N R 38W	G-5
	T ___ R ___	_____
	T ___ R ___	_____
	T ___ R ___	_____
2. Property Controlling in Section	S ___ T ___ R ___	_____
	S ___ T ___ R ___	_____
3. Miscellaneous Property in Sec.	S ___ T ___ R ___	_____
	S ___ T ___ R ___	_____

Register's Office }
Gogebic County } ss.

Received for record the 27th day of OCTOBER A. D. 1997 at 11:15 o'clock PM m., and recorded in Liber 6 of CORNERS on page 247
Rimona Collins, Deputy
Register of Deeds

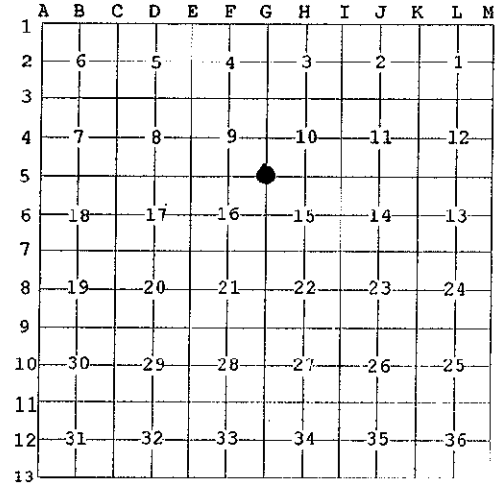
Register of Deeds Stamp & File Number

4. Lot No. _____, Recorded Plat _____
5. Private Claims _____

Section Corner Sec. 9, 10, 16, 15, T43N, R38W

I, Gary L. Pisoni, in a field survey on June 26, 1997 do hereby state that under requirements of P.A. 74, Michigan P.A. of 1970, the corner points mentioned in lines 1 and 2 above were in conformance with regulations and rules therefore as required in the current manual of survey instructions of the United States Department of the Interior, Bureau of Land Management or by a decree of a Court of Law and /or that the corner points mentioned in lines 3, 4 and 5 above were in conformance with the rules of the Michigan Board of Land Surveyors or by a Decree of a Court of Law; established, re-established, monumented, recovered, found as expressed below:

NOTE: Not more than 2 corners, all in the same town and range, may be recorded on this certificate.



A. Description of original monument and accessories and/or subsequent restoration:

Original corner established by Zelotes B. Searls, U.S. Deputy Surveyor on July 30, 1851.
Original corner: Wood post
Original bearing trees:
Hemlock 24" S 58°E 10 links (6.60 feet)
Hemlock 28" N 55°W 4 links (2.64 feet)

PEER GROUP APPROVED
Richard P. Dzuba 10/8/97
COUNTY REPRESENTATIVE

B. Description of corner evidence found and/or method applied in restoring or reestablishing corner:

Original wood post not found.

Found the stump remains of the Northwest hemlock B.T. being a large stump rotted at ground line.
Found bark fragments and root holes for the Southeast hemlock B.T.

Accept the remains of the hemlocks as the original bearing trees and set the Section corner at record bearing and distance from the remains of the original hemlock B.T.s

From the Section corner position running South, found an old blazed line through a stand of large old growth hemlock and cedar.

Corner Record Research on file with County Representative.

C. Description of monument for corner and accessories established to perpetuate locating the position of the corner:

At the corner position, I set a 2" diameter by 30" long split base aluminum pipe monument with a 3" cast aluminum cap, stamped to read: County Remonumentation, T43N, R38W, S-9, S-10, S-15, S-16, 1997, RLS-27457 from which I established the following new blazed and scribed bearing trees: (all measurements taken to a nail in side of tree)

Cedar	8"	N 26°W	33.90 feet
Cedar	10"	N 58°E	33.03 feet
Red Maple	16"	S 08°E	41.18 feet
Cedar	12"	S 76°W	20.27 feet
Steel sign post		N 33°E	0.62 feet

97-04
Signed by Gary L. Pisoni

Date 7-15-97

Surveyor's Michigan License No. 27457

