

SURVEY & REMONUMENTATION

OCT 03 1996

COMMISSION

LAND CORNER RECORDATION CERTIFICATE
Filing Requirement of Act 74, Mich. P.A. 1970

For corners in Gogebic Located In: _____ Corner Code # _____
(County)

1. Public Land Survey	Sec. 3	T	43N	R	39W	G-1
	Sec. 34	T	44N	R	39W	G-13
		T		R		
		T		R		
2. Property Controlling in Section	S	T		R		
	S	T		R		
3. Miscellaneous Property in Section	S	T		R		
	S	T		R		

Register's Office }
Gogebic County } ss.

Received for record the 28TH day of MARCH A. D. 1996 at 11:20 o'clock

A m., and recorded in Lib. 5 of CORNERS

on page 326
Ramona Collins, Deputy
Register of Deeds

Register of Deeds Stamp & File Number

4. Lot No. _____, Recorded Plat _____
5. Private Claims _____

Section corner to Sections 3, 4, 33 & 34, T43-44N, R39W

I, John R. Garske, in a field survey on February 26, 1996, do hereby certify that under requirements of P.A. 74, Michigan P.A. of 1970, the corner points mentioned in lines 1 and 2 above were in conformance with regulations and rules therefore as required in the current manual of survey instructions of the United States Department of the Interior, Bureau of Land Management or by a decree of a Court of Law and/or that the corner points mentioned in lines 3, 4 and 5 above were in conformance with the rules of the Michigan Board of Professional Surveyors or by a Decree of a Court of Law; established, re-established, monumented, re-monumented, recovered, found as expressed below:

NOTE: Not more than 4 corners, all in the same town and range, may be recorded on this certificate.

	A	B	C	D	E	F	G	H	I	J	K	L	M
2	6		5		4		3		2		1		
3													
4	7		8		9		10		11		12		
5													
6	18		17		16		15		14		13		
7													
8	19		20		21		22		23		24		
9													
10	30		29		28		27		26		25		
11													
12	31		32		33		34		35		36		
13													

A. Description of original monument and accessories and/or subsequent restoration:

Original corner set by Austin Burt, D.S., in 1847, he set a white birch 3°-N72°E-55 links and a sugar pine 6°-N39°W-91 links.

- 1851-Wells Burt, D.S., set two new B.T.'s: W. Birch 5°-S51°W-34 links and W. birch 4°-S61°E- 13 links.
- 1938-Gunderson's Plat on Crystal Lake shows the corner as set by James Jezek, Surveyor, and Chas. Walker, Engineer.
- 1962-Corner recovered by Donald Lappala, RLS. He found a 4" square monument from the plat. Corner recorded in L.C.R.C., page 1, L74. Lappala's accessories: W.M.P. pole - S74°-30°W - 104.2 feet; 14" jack pine - N15°-30°W - 48.00 feet; 15" jack pine - N02°W - 39.3 feet. He also set a brass capped iron pipe witness corner on the south edge of the monument.

B. Description of corner evidence found and/or method applied in restoring or reestablishing corner:

I found the concrete monument shown on the Gunderson Plat and recorded by Don Lappala along with the witness monument set by Lappala, both in good condition. Lappala indicates the corner in the centerline of Gunderson Street with the plat showing it 33 feet north of centerline. The distance from the section corner south to a found concrete monument checks with the plat and Lappala's survey which indicates that he recovered an original bearing tree at the section corner.

(Research on File)

SEE SKETCH ON BACK

PEER GROUP APPROVED
Richard L. Drahm 3/27/96
COUNTY REPRESENTATIVE

C. Description of monument for corner and accessories established to perpetuate locating the position of the corner:

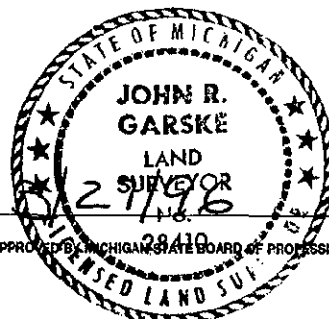
I found a 1/2" square iron pin in the centerline of the road from which: Witness corner (Lappala's brass cap) at south edge of concrete monument -

- N07°E - 32.73 feet
- Reference Monument (set) - 2 1/2" aluminum pipe with 3 1/4" stamped alum. cap. - N66°E - 57.21 feet - Steel sign rail - N66°E - 0.72 feet.
- P. pole - S79°W - 102.53 feet
- 14" J. pine - N08°W - 48.00 feet (existing)
- 15" J. pine - N06°E - 39.26 feet (existing)

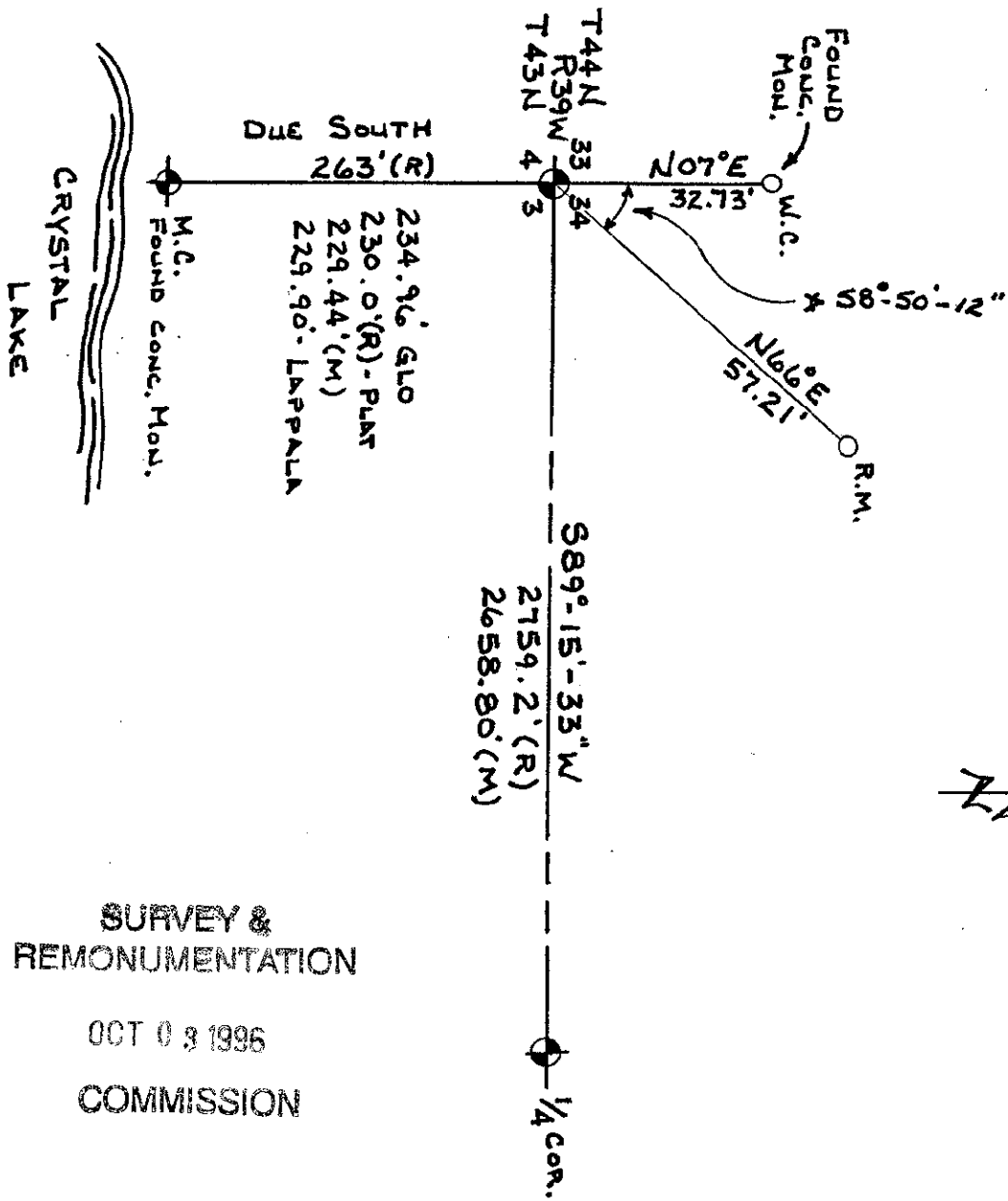
Signed by John R. Garske

Date _____

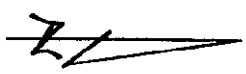
Surveyor's Michigan License No. 28410



FORM APPROVED BY MICHIGAN STATE BOARD OF PROFESSIONAL SURVEYORS, JAN. 28, 1971
REVISED MAY 14, 1975
REVISED JAN., 1983



SKETCH
 No Scale



SURVEY &
 REMONUMENTATION

OCT 03 1996
 COMMISSION