

SURVEY & REMONUMENTATION

AUG 08 1997

COMMISSION

LAND CORNER RECORDATION CERTIFICATE
Filing Requirement of Act 74, Mich. P.A. 1970

Register's Office }
 Gogebic County } ss.

For corners in Gogebic (County) Located In: Corner Code #

1. Public Land Survey	Sec. 32	T 44N	R 39W	C-12
		T	R	
		T	R	
		T	R	
2. Property Controlling in Section	S	T	R	
	S	T	R	
3. Miscellaneous Property in Section	S	T	R	
	S	T	R	

Received for record the
16th day of MAY
 A. D. 1997 at 11:20 o'clock
A m., and recorded in
 Lib. 6 of CORNERS
 on page 126
Ramona Collins Deputy
 Register of Deeds

Register of Deeds Stamp & File Number

4. Lot No. _____, Recorded Plat _____
 5. Private Claims _____

One-Quarter Corner of Sec. 31 and Sec. 32

I, John R. Garske, in a field survey on November 11, 1996, do hereby certify that under requirements of P.A. 74, Michigan P.A. of 1970, the corner points mentioned in lines 1 and 2 above were in conformance with regulations and rules therefore as required in the current manual of survey instructions of the United States Department of the Interior, Bureau of Land Management or by a decree of a Court of Law and/or that the corner points mentioned in lines 3, 4 and 5 above were in conformance with the rules of the Michigan Board of Professional Surveyors or by a Decree of a Court of Law; established, re-established, monumented, re-monumented, recovered, found as expressed below:

A	B	C	D	E	F	G	H	I	J	K	L	M
2	6	5	4	3	2							
3												
4	7	8	9	10	11	12						
5												
6	18	17	16	15	14	13						
7												
8	19	20	21	22	23	24						
9												
10	30	29	28	27	26	25						
11												
12	31	32	33	34	35	36						
13												

NOTE: Not more than 4 corners, all in the same town and range, may be recorded on this certificate.

A. Description of original monument and accessories and/or subsequent restoration:

- Corner established by Wells Burt, U.S. Deputy Surveyor, in 1851. From which bears a S. Pine 8" - N37°W. 12 links and S. Pine 6" S13°-23 links.
- In 1935, acquisition cruiser's restored one-quarter corner by identify the original corner accessories. Set a 6" x 10" cedar post reference monument on East Edge of gravel Road, Corner position marked with a 2 inch iron pipe below gravel surface of county road.
- In 1967, Donald Lappala, Land Surveyor found a 2 inch iron pipe below gravel surface and set a 3/4" x 8" iron pipe inside the iron pipe and set a 2" x 5 foot iron pipe with a bronze cap stamped: T44N R39W; R.M. 26.8' west; 1/4 S-31, S-32, RLS 12585; 1967 and from which he established the following witnesses - W.M. P. Co., Pole 2594, N55°, 64.1 feet; W.M.P. Co., Pole No. 1373 S64°W, 125.3 feet. Recorded L1, pg 55

B. Description of corner evidence found and/or method applied in restoring or reestablishing corner:

- Found a P.K. Nail at the one-quarter corner location and a reference monument which was set by Donald Lappala in 1967. I did not find any of Lappala's witnesses to the one quarter corner.
- This corner position has been used by various surveyors and accepted as being the one-quarter corner in several surveys of record.

(Record Research on File)

PEER GROUP APPROVED
Richard L. Draba 5/12/97
 COUNTY REPRESENTATIVE

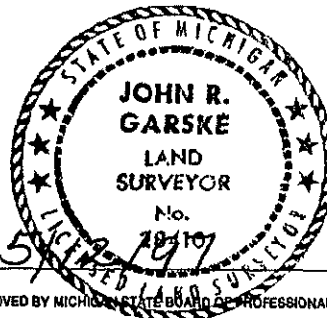
C. Description of monument for corner and accessories established to perpetuate locating the position of the corner:

Accepted above P.K. Nail and reference monument and established the following witnesses and reference objects.
 Reference monument (set) - 2 1/2" aluminum pipe with a 3 1/4" aluminum cap stamped R.M. - S51°E - 49.34 feet with wood post with sign 1.41 feet away.
 - (existing) 10" J. Pine - S28°E - 39.90 feet
 - (existing) 8" J. Pine - N24°W - 84.27 feet
 - (existing) 8" J. Pine - S79°E - 34.87 feet

(see reverse for sketch)

Signed by John R. Garske
 Surveyor's Michigan License No. 28410

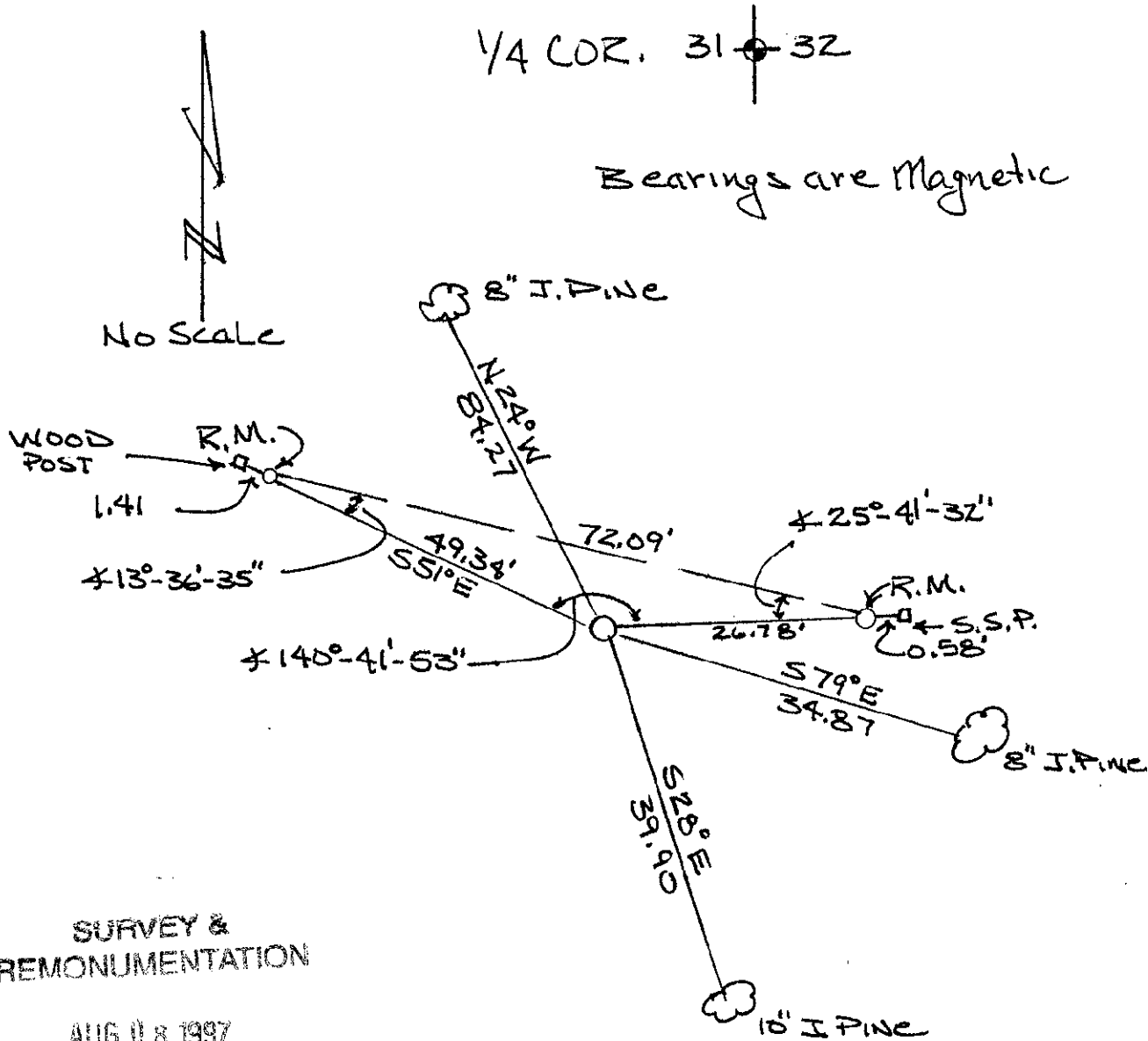
Date 5/12/97



FORM APPROVED BY MICHIGAN STATE BOARD OF PROFESSIONAL SURVEYORS, JAN. 28, 1971
 REVISED MAY 14, 1975
 REVISED JAN., 1983

1/4 COR. 31-32

Bearings are Magnetic



SURVEY & REMONUMENTATION

AUG 08 1997

COMMISSION