

SURVEY & REMONUMENTATION

JAN 22 1998

SECTION

LAND CORNER RECORDATION CERTIFICATE
Filing Requirement of Act 74, Mich. P.A. 1970

Register's Office } ss.
Gogebic County }

Received for record the
22ND day of DECEMBER
A.D. 1997 at 11:00 o'clock
A m., and recorded in
Lib 6 of CORNERS
on page 288
Annora Collins, Deputy
Register of Deeds

For corners in

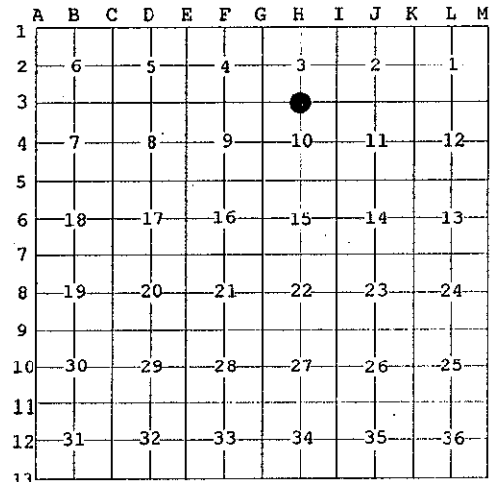
<u>Gogebic</u> (County)	Located In:	Corner Code #
1. Public Land Survey	T <u>44N</u> R <u>39W</u>	<u>H-3</u>
	T _____ R _____	_____
	T _____ R _____	_____
	T _____ R _____	_____
2. Property Controlling in Section	S _____ T _____ R _____	_____
	S _____ T _____ R _____	_____
3. Miscellaneous Property in Sec.	S _____ T _____ R _____	_____
	S _____ T _____ R _____	_____

Register of Deeds Stamp & File Number

4. Lot No. _____, Recorded Plat _____
5. Private Claims _____

Quarter Corner Between Sections 3 and 10, T44N, R39W

I, Gary L. Pisoni, in a field survey on December 9, 1997 do hereby state that under requirements of P.A. 74, Michigan P.A. of 1970, the corner points mentioned in lines 1 and 2 above were in conformance with regulations and rules therefore as required in the current manual of survey instructions of the United States Department of the Interior, Bureau of Land Management or by a decree of a Court of Law and /or that the corner points mentioned in lines 3, 4 and 5 above were in conformance with the rules of the Michigan Board of Land Surveyors or by a Decree of a Court of Law; established, re-established, monumented, recovered, found as expressed below:



NOTE: Not more than 2 corners, all in the same town and range, may be recorded on this certificate.

A. Description of original monument and accessories and/or subsequent restoration:

Original corner established in 1851 by Wells Burt, U.S. Deputy Surveyor.
Original Bearing Trees:

Hemlock	18"	N 05° W	5 lks (3.30 feet)
Hemlock	18"	N 73° E	27 lks (17.82 feet)

On 7/2/62, Donald D. Lappala RLS U.S.F.S., found a 4"x4"x72" cedar post at record bearing and distance from the decayed hemlock stump of one original bearing tree, and a stump hole at N 73° E, 27 lks. He set a 2" x 5' long galvanized iron pipe with a 3" brass cap stamped as follows: T44N, R39W, 1/4, S3, S10, 1962, RLS 12585, recorded in Land Corner Certificate L.1, Page 75 on May 6, 1963.

1962 Bearing Trees:

Sugar Maple	4"	S 88° E	20.5 feet
Sugar Maple	3"	S 32° E	4.8 feet
Sugar Maple	5"	S 12° W	16.0 feet
Cedar sign post	4"x4"x7'	South	2.6 feet

PEER GROUP APPROVED
Richard P. Decker 12/12/97
COURT APPROVED

B. Description of corner evidence found and/or method applied in restoring or reestablishing corner:

No evidence of original B.T.s found.

On 12/9/97, found monument as set by Donald D. Lappala in 1962 along with the following trees:

Sugar Maple	8"	S 87° E	20.47 feet
Sugar Maple	6"	S 34° E	4.82 feet
Sugar Maple	8"	S 14° W	15.97 feet
Wood post	4"x4"	S 20° E	3.1 feet

Corner record research on file with County Representative.



C. Description of monument for corner and accessories established to perpetuate locating the position of the corner:

Blazed and scribed the following new bearing tree: (measurement taken to a nail in side of tree)

Balsam	5"	N 06° E	29.21 feet
Steel sign post		West	0.80 feet

97-00
Signed by Gary L. Pisoni Date December 17, 1997

Surveyor's Michigan License No. 27457