

**SURVEY &
REMONUMENTATION**

AUG 08 1997

COMMISSION

**LAND CORNER RECORDATION CERTIFICATE
Filing Requirement of Act 74, Mich. P.A. 1970**

Register's Office } ss.
Gogebic County }

For corners in Gogebic Located In: _____ Corner Code # _____
(County)

Received for record the
16th day of July
A. D. 1997 at 1:40 o'clock
P m., and recorded in
Liber 6 of CORNERS
on page 160
Colleen M. Kibak
Deputy Register of Deeds

1. Public Land Survey	Section 33	T <u>45N</u> R <u>41W</u> F-13	
		T <u>44N</u> R <u>41W</u> F-1	
		T _____ R _____	
		T _____ R _____	
2. Property Controlling in Section	S _____	T _____ R _____	
	S _____	T _____ R _____	
3. Miscellaneous Property in Section	S _____	T _____ R _____	
	S _____	T _____ R _____	

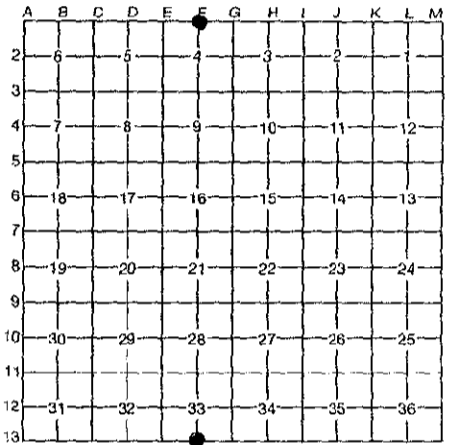
Register of Deeds Stamp & File Number

4. Lot No. _____, Recorded Plat _____
5. Private Claims _____

One quarter corner common to section 33 and 4 T45N, R41W.

I, John R. Garske, in a field survey on June 17, 1997, do hereby certify that under requirements of P.A. 74, Michigan P.A. of 1970, the corner points mentioned in lines 1 and 2 above were in conformance with regulations and rules therefore as required in the current manual of survey instructions of the United States Department of the Interior, Bureau of Land Management or by a decree of a Court of Law and/or that the corner points mentioned in lines 3, 4 and 5 above were in conformance with the rules of the Michigan Board of Professional Surveyors or by a Decree of a Court of Law; established, re-established, monumented, re-monumented, recovered, found as expressed below:

NOTE: Not more than 4 corners, all in the same town and range, may be recorded on this certificate.



A. Description of original monument and accessories and/or subsequent restoration:

On July 31, 1847, William Burt, D.S. established the corner and the following bearing trees:
18" Tamarack N37°E 65 links
8" Spruce N23°W 24 links

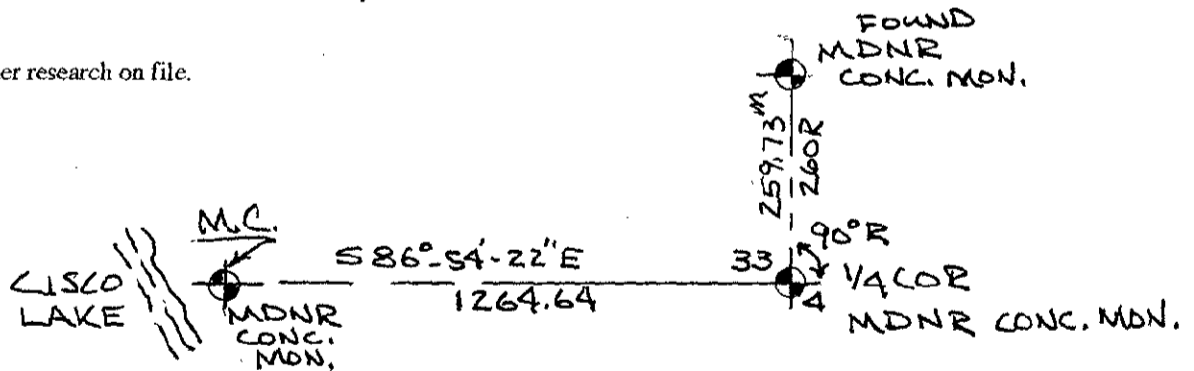
In 1990 Richard Drahn, R.L.S. #21564, found a Michigan Conservation Department monument and established bearing trees and reference objects (see section C below).

Corner recorded Liber 3, page 289.

B. Description of corner evidence found and/or method applied in restoring or reestablishing corner:

I found the concrete monument and bearing trees as noted by Richard Drahn, I contacted the MDNR and found that the monument was set by Shadko in 1943 at a found 4" x 4" wood stake.

Corner research on file.



C. Description of monument for corner and accessories established to perpetuate locating the position of the corner:

- 4" Tamarack N60°W 14.93 ft. (existing)
 - 5" Tamarack N69°E 30.22 ft. (existing)
 - 5" Tamarack S43°W 37.20 ft. (existing)
 - 6" Steel rail S24°E 2.3 ft. (existing)
 - 6" x 5 ft. old sign post N60°W 1.0 ft. (existing)
- All B.T'S are in good condition. MDNR conc. Mon. North-259.73 (M) 260R

PEER GROUP APPROVAL
Richard L. Drahn 7/15/97
COUNTY REPRESENTATIVE



Signed by John R. Garske

Date 7/15/97

Surveyor's Michigan License No. 28410