

OCT 02 1996

COMMISSION

LAND CORNER RECORDATION CERTIFICATE
Filing Requirement of Act 74, Mich. P.A. 1970

Register's Office } ss.
Gogebic County }

For corners in Gogebic (County) Located In: Corner Code #

- 1. Public Land Survey Sec. 15 T 45N R 39W G-6
2. Property Controlling in Section S T R
3. Miscellaneous Property in Section S T R

Received for record the 28th day of MARCH A. D. 1996 at 11:25 o'clock A. m., and recorded in Liber 5 of CORNBAS on page 332 Ramona Collins Deputy Register of Deeds

Register of Deeds Stamp & File Number

- 4. Lot No. , Recorded Plat
5. Private Claims

One-quarter cor. to Sections 15 and 16, T45N, R39W.

I, John R. Garske, in a field survey on January 2, 1996, do hereby certify that under requirements of P.A. 74, Michigan P.A. of 1970, the corner points mentioned in lines 1 and 2 above were in conformance with regulations and rules therefore as required in the current manual of survey instructions of the United States Department of the Interior, Bureau of Land Management or by a decree of a Court of Law and/or that the corner points mentioned in lines 3, 4 and 5 above were in conformance with the rules of the Michigan Board of Professional Surveyors or by a Decree of a Court of Law; established, re-established, monumented, re-monumented, recovered, found as expressed below:

NOTE: Not more than 4 corners, all in the same town and range, may be recorded on this certificate.

Grid table with columns A-M and rows 1-12. A dot is marked at the intersection of column F and row 6.

A. Description of original monument and accessories and/or subsequent restoration:

- Original survey by Wells Burt, D.S., in 1851. He set a wooden post from which: Cedar 18" - S35°W - 4 links and a 4" hemlock - S78°E - 5 links.
- 1969 - MDOT Highway plans shows approximate corner in centerline of old road.

B. Description of corner evidence found and/or method applied in restoring or reestablishing corner:

I found a yellow tag on an old wooden post east of the centerline of the old road opposite the corner location. No evidence of the original corner position exists. Measurements north and south to existing corners check reasonably well with the centerline position for the 1/4 corner. I set the corner in the centerline of the road opposite the wooden post which checks with a distance split but not on line.

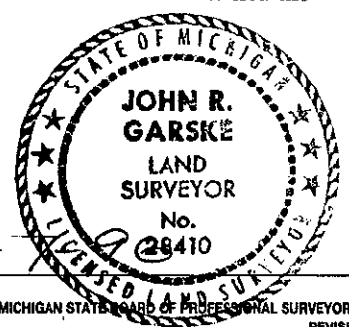
(Research on File) (See sketch on Back)

PEER GROUP APPROVED
Richard L. Deahn 3/27/96
COUNTY REPRESENTATIVE

C. Description of monument for corner and accessories established to perpetuate locating the position of the corner:

I set a 2 1/2" diameter x 36" long aluminum pipe monument with a 3 1/4" diameter aluminum cap flush with the old road. The cap is stamped: T45N, R39W, 1/4 cor., S-15, S-16, 1996, RLS 28410, from which I established the following bearing trees and/or reference objects:

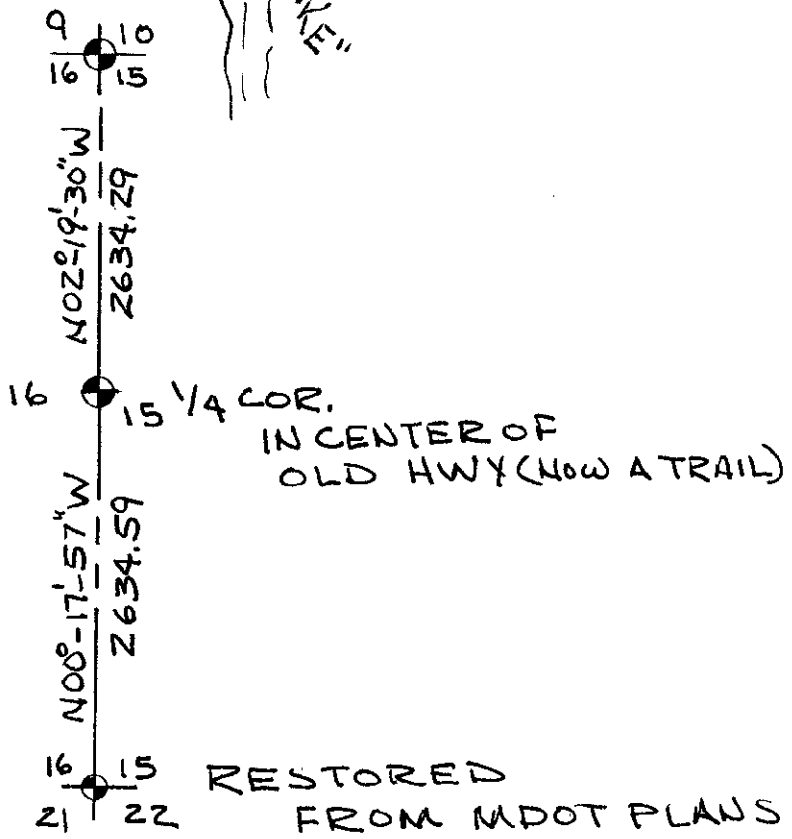
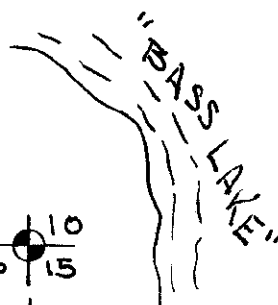
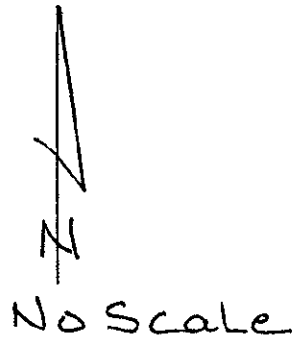
- 8" spruce - S81°E - 22.14 feet
16" split cedar - N33°E - 35.92 feet
12" spruce - S25°W - 57.31 feet
Steel sign rail - Due West - 6.67 feet
Old post with sign - Due East - 17.80 feet



Signed by John R. Garske Date 3-28-96
Surveyor's Michigan License No. 28410

SKETCH:

1/4 CORNER
S-16 & S-15
T45N, R39W



SURVEY &
REMONUMENTATION

OCT 03 1996

COMMISSION