

MAY 16 1977

LAND CORNER RECORDATION CERTIFICATE
Filing Requirement of Act 74, Mich. P.A. 1970

Register's Office
Gogebic County

For corners in Gogebic (County) Located In: Corner Code #
1. Public Land Survey T 45N R 39W I-6
2. Property Controlling In Section S T R
3. Miscellaneous Property in Section S T R

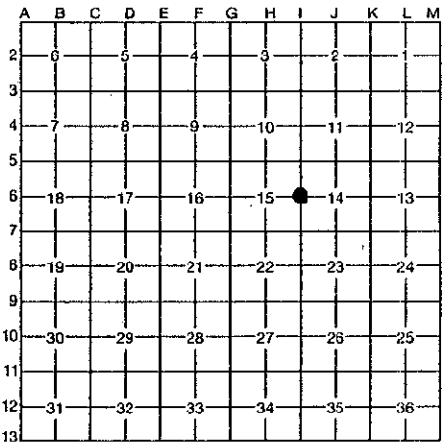
Received for record the 16th day of AUGUST A. D. 1996 at 2:30 o'clock P m., and recorded in Liber 6 of CORNERS on page 34
Richard J. Brown
Register of Deeds

Register of Deeds Stamp & File Number

4. Lot No. , Recorded Plat
5. Private Claims

The one-quarter corner common to Sections 15 and 14, T45N, R39W.

I, John R. Garske, in a field survey on AUGUST 5, 1996, do hereby certify that under requirements of P.A. 74, Michigan P.A. of 1970, the corner points mentioned in lines 1 and 2 above were in conformance with regulations and rules therefore as required in the current manual of survey instructions of the United States Department of the Interior, Bureau of Land Management or by a decree of a Court of Law and/or that the corner points mentioned in lines 3, 4 and 5 above were in conformance with the rules of the Michigan Board of Professional Surveyors or by a Decree of a Court of Law; established, re-established, monumented, re-monumented, recovered, found as expressed below:



NOTE: Not more than 4 corners, all in the same town and range, may be recorded on this certificate.

A. Description of original monument and accessories and/or subsequent restoration:

In 1851, Wills Burt, U.S. Deputy Surveyor, set a wooden post with the following bearing trees:
6" Ironwood - N5°E - 3 links
12" Sugar - S25°W - 31 links

B. Description of corner evidence found and/or method applied in restoring or reestablishing corner:

I found a 3" x 3" wooden post with the following bearing trees: 20" maple - N87°E 15 feet ±
8" maple - N05°E - 10 feet ±

The Keewenaw Land Association placed a B.T. tag on an Ironwood in 1992. I accepted the wooden post as the corner position. Distances north and south seemed to check reasonably well with natural feature ties. Discussions with Keewenaw's cruisers revealed that the post has been in this location since the 1940's. Although I could find no evidence of the original bearing trees, Keewenaw's people felt that the post was set from the original B.T.'s. I am accepting this corner since it has stood in a harmonious, accepted position for over 50 years.

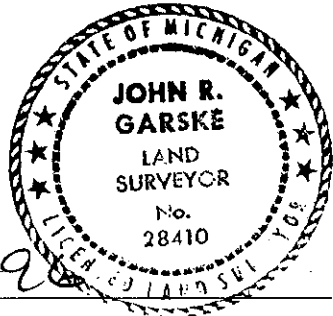
(Record research on file) See sketch on back

C. Description of monument for corner and accessories established to perpetuate locating the position of the corner:

I set a 30" x 2 1/2" diameter aluminum pipe with a 3 1/4" diameter aluminum cap stamped: T45N, R39W, 1/4, S-15, S-14, 1995, R.L.S. 28410. The following bearing trees and reference objects were established:


- 7" sugar - S66°E - 31.19 feet
8" sugar - S03°W - 35.32 feet
6" sugar - N85°W - 31.80 feet
6" yellow birch - N14°W - 34.15 feet
Steel sign rail - east - 1.23 feet

PEER GROUP APPROVED
Richard L. Deahn 9/12/96
COUNTY REPRESENTATIVE



Signed by John R Garske
Surveyor's Michigan License No. 28410

Date 9-11-96


 NOT TO
 SCALE

T.45N., R.39W.
 I-6

10
 15 —●— 14 ← 1945 M.DOT
 TIES
 FOUND WOOD POST
 WITH B.T.'S

$N00^{\circ}47'0''W$
 2629.35

15
 14 —●— 14 1/4 COR.
 FOUND
 WOOD POST

$N01^{\circ}20'32''W$
 2625.88

15
 22 —●— 23 ← RESET
 CORNER
 FROM MDNR INFO
 & FOUND MONUMENTS

CHASE &
 ASSOCIATES

MAY 18 1997

CON. MISSOURI