

MAY 16 1997

LAND CORNER RECORDATION CERTIFICATE
Filing Requirement of Act 74, Mich. P.A. 1970

Register's Office } ss.
Gogebic County }

For corners in	Located In:	Corner Code #
Gogebic (County)		
1. Public Land Survey	T 45N R 39W	I-8
	T _____ R _____	_____
	T _____ R _____	_____
	T _____ R _____	_____
2. Property Controlling in Section	S _____ T _____ R _____	_____
	S _____ T _____ R _____	_____
3. Miscellaneous Property in Section	S _____ T _____ R _____	_____
	S _____ T _____ R _____	_____

Received for record the
16TH day of AUGUST

A. D. 1996 at 2:30 o'clock

P. M., and recorded in

Lib. 6 of CORNERS

on page 35

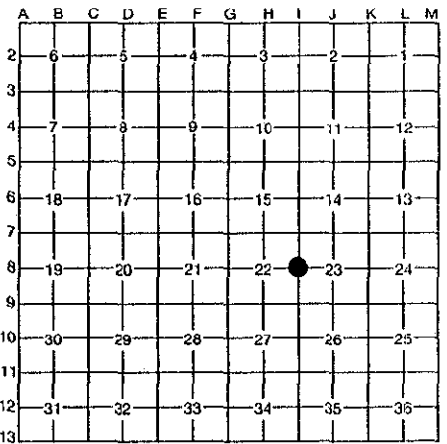
Richard J. Brown
Register of Deeds

Register of Deeds Stamp & File Number

- 4. Lot No. _____, Recorded Plat _____
- 5. Private Claims _____

The one-quarter section corner common to Sections 22 & 23, T45NW, R39W.

I, John R. Garske, in a field survey on July 24, 1996, do hereby certify that under requirements of P.A. 74, Michigan P.A. of 1970, the corner points mentioned in lines 1 and 2 above were in conformance with regulations and rules therefore as required in the current manual of survey instructions of the United States Department of the Interior, Bureau of Land Management or by a decree of a Court of Law and/or that the corner points mentioned in lines 3, 4 and 5 above were in conformance with the rules of the Michigan Board of Professional Surveyors or by a Decree of a Court of Law; established, re-established, monumented, re-monumented, recovered, found as expressed below:



NOTE: Not more than 4 corners, all in the same town and range, may be recorded on this certificate.

A. Description of original monument and accessories and/or subsequent restoration:

In 1851, Wills Burt, U.S. Deputy Surveyor, set a post with the following bearing trees:

- 8" Y. birch - N26°E - 8 links
- 10" Y. birch - N38°W - 23 links

1940's Era - Survey by Shadco, Surveyor with the Michigan Department of Conservation, now the M.D.N.R.

B. Description of corner evidence found and/or method applied in restoring or reestablishing corner:

Nothing was found at the 1/4 corner location but I did find the north and south 1/16 corners monumented by Shadco, a surveyor for the Michigan Department of Conservation. I tied into the found 1/16 monuments and the southeast and northeast section corners. I then established the 1/4 corner by extending the lines from the found corners to an intersection point with doubled distances as shown on the sketch on the back. The resulting location fits closely with a proportioned position.

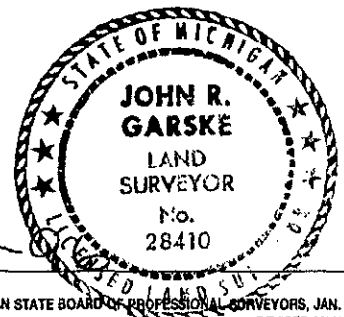
Record research on file.

C. Description of monument for corner and accessories established to perpetuate locating the position of the corner:

I set a 3' x 2 1/2" aluminum pipe with a 3" cap stamped: T45N, R39W, 1/4, S-22, S-23, 1996, R.L.S. 28410. The following bearing trees and references were established:

- Steel sign rail - N35°E - 0.75 feet
- 7" Balsam - N20°W - 13.13 feet
- 6" Balsam - N59°E - 18.45 feet
- 3" W. birch - S37°E - 20.30 feet
- 4" Balsam - S22°W - 23.28 feet

Peer Group
Richard H. Dedon 9/12/96
COUNTY *Benjamin Harrison*



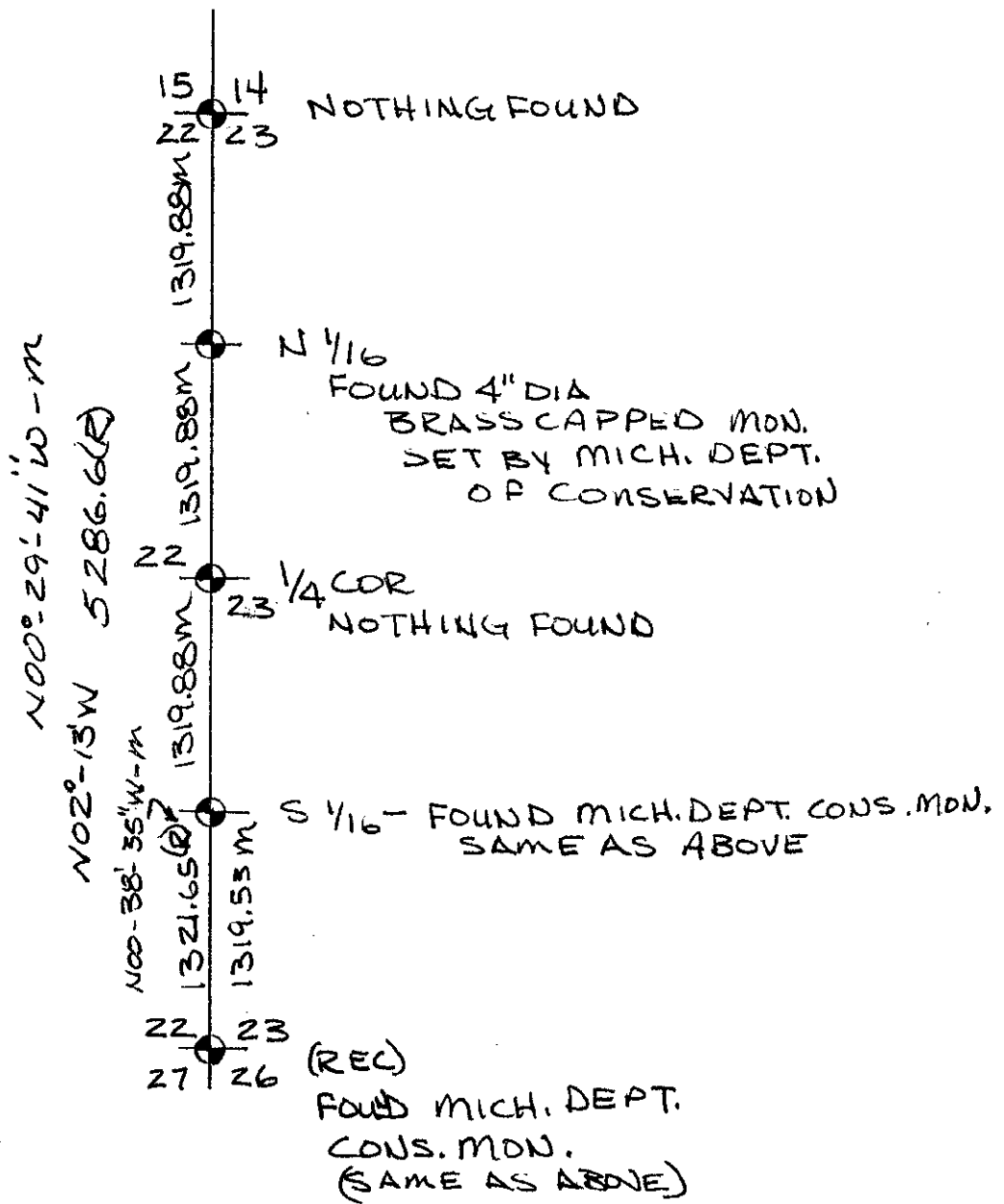
Signed by *John R. Garske*
Surveyor's Michigan License No. 28410

Date 9-11-96
FORM APPROVED BY MICHIGAN STATE BOARD OF PROFESSIONAL SURVEYORS, JAN. 28, 1971
REVISED MAY 14, 1975
REVISED JAN., 1983

T. 45N., R. 39W.

I-8

SKETCH
NO SCALE



ADVISORY &
RECOMMENDATION

MAY 16 1997

COMMISSION

(R) - RECORD INFO FROM
MDNR - 1940'S ERA
SURVEY BY SHADCO, A
SURVEYOR WITH THE MICH.
DEPT. OF CONS.

M - MEASURED - 1996 SURVEY
BY J. GARSKE, RLS