

SURVEY & REMONUMENTATION

JAN 22 1998

SECTION

LAND CORNER RECORDATION CERTIFICATE
Filing Requirement of Act 74, Mich. P.A. 1970

Register's Office }
Gogebic County } ss.

Received for record the
22nd day of DECEMBER
A. D. 1997 at 11:00 o'clock
A. m., and recorded in
Liber 6 of CORNERS
on page 289
Ramona Collins, Deputy
Register of Deeds

For corners in

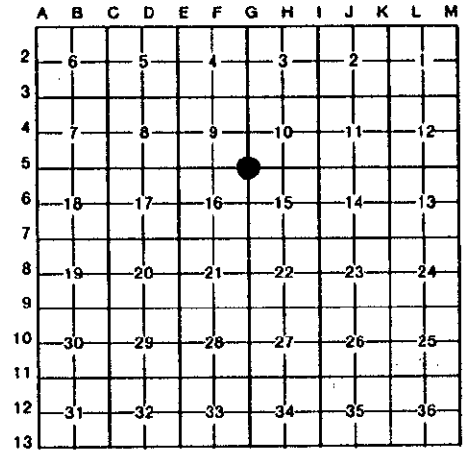
Gogebic _____ (County)	Located In:	Corner Code #
1. Public Land Survey	T <u>45N</u> R <u>41W</u>	<u>G-5</u>
	T _____ R _____	_____
	T _____ R _____	_____
	T _____ R _____	_____
2. Property Controlling in Section	S _____ T _____ R _____	_____
	S _____ T _____ R _____	_____
3. Miscellaneous Property in Sec.	S _____ T _____ R _____	_____
	S _____ T _____ R _____	_____

Register of Deeds Stamp & File Number

4. Lot No. _____, Recorded Plat _____
5. Private Claims _____

Section Corner 9, 10, 15 & 16; T.45 N., R.41 W.

Richard L. Drahn, in a field survey on December 13, 19 97, do hereby certify that under requirements of P.A. 74, Michigan P.A. of 1970, the corner points mentioned in lines 1 and 2 above were in conformance with regulations and rules therefore as required in the current manual of survey instructions of the United States Department of the Interior, Bureau of Land Management or by a decree of a Court of Law and/or that the corner points mentioned in lines 3, 4 and 5 above were in conformance with the rules of the Michigan Board of Land Surveyors or by a Decree of a Court of Law; established, re-established, monumented, re-monumented, recovered, found as expressed below:



NOTE: Not more than 4 corners, all in the same town and range, may be recorded on this certificate.

A. Description of original monument and accessories and/or subsequent restoration:

Corner established by A. Merryweather on 6/16/1852. Original B.T.s --- 7" Balsam S.39 E. 18 links (11.88') --- 6" Balsam N.52 W. 9 lks. (5.94') --- John P. Smallwood, RLS for MSHD, on 6/7/61 recovered a wood post at this location and set three new B.T.s.

Richard L. Drahn (21564) on 10/26/89 recovered the wood post and Smallwoods B.T.s. He set a 3/4" X 7' alum. rod with a 3 1/4" stamped alum. cap and:

- 5" Black Ash N.47 E. 13.25'
- 7" Black Ash S.51 E. 17.74'
- 5" Black Ash S.62 W. 18.87'
- 6' Steel sign rail N.89 W. 2.0'

B. Description of corner evidence found and/or method applied in restoring or reestablishing corner:

Corner recorded in Gogebic County Liber 3, Page 292 on 1/23/90.

Corner research on file with Gogebic County records.

Recovered the monument as described and the bearing trees as follows:

- 6" Black Ash N.47 E. 13.24'
- 8" Black Ash S.51 E. 17.75'
- 6" Black Ash S.59 W. 18.87'
- 6' Steel sign rail N.87 W. 1.97'

No evidence of the original B.T.s remains.

C. Description of monument for corner and accessories established to perpetuate locating the position of the corner:

New bearing tree referenced:

- 5" Black Ash N.48 W. 11.32'

PEER GROUP APPROVED
Richard L. Drahn 12/19/97
COUNTY REGISTER



Signed by Richard L. Drahn Date December 15, 1997

Surveyor's Michigan License No. 21564