

MAR 02 2000

SECTION

LAND CORNER RECORDATION CERTIFICATE Register's Office }
Filing Requirement of Act 74, Mich. P.A. 1970 Gogebic County } ss.

For corners in

<u>Gogebic</u> (County)	Located In:	Corner Code #
1. Public Land Survey	T <u>45N</u> R <u>43W.</u>	<u>G-3</u>
	T _____ R _____	_____
	T _____ R _____	_____
	T _____ R _____	_____
2. Property Controlling in Section	S _____ T _____ R _____	_____
	S _____ T _____ R _____	_____
3. Miscellaneous Property in Sec.	S _____ T _____ R _____	_____
	S _____ T _____ R _____	_____

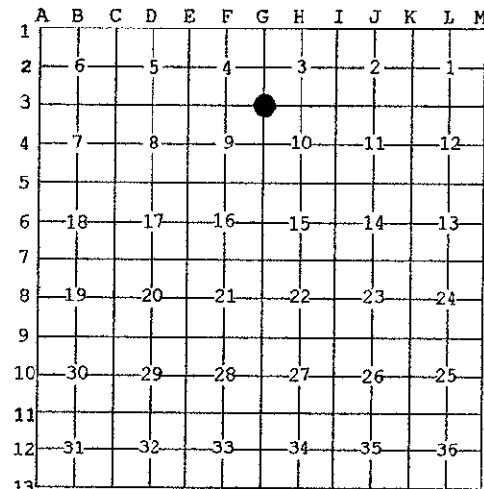
Received for record the
22nd day of SEPTEMBER
 A. D. 1999 at 1:00 o'clock
P m., and recorded in
 Liber 7 of CORNERS
 on page 244.
Ramona Collins, Deputy
 Register of Deeds

Register of Deeds Stamp & File Number

4. Lot No. _____, Recorded Plat _____
 5. Private Claims _____

Section Corner 3, 4, 9 & 10; T.45 N., R.43 W.

I, Richard L. Drahn, in a field survey on August 25, 1999 do hereby state that under requirements of P.A. 74, Michigan P.A. of 1970, the corner points mentioned in lines 1 and 2 above were in conformance with regulations and rules therefore as required in the current manual of survey instructions of the United States Department of the Interior, Bureau of Land Management or by a decree of a Court of Law and /or that the corner points mentioned in lines 3, 4 and 5 above were in conformance with the rules of the Michigan Board of Land Surveyors or by a Decree of a Court of Law; established, re-established, monumented, recovered, found as expressed below:



NOTE: Not more than 2 corners, all in the same town and range, may be recorded on this certificate.

A. Description of original monument and accessories and/or subsequent restoration:
 Original corner established by A. Merryweather on 7/23/1852. Original bearing trees:
 Hemlock 14" S.80 °W. 15 links (9.90')
 Y. Birch 18" N.75° E. 16 links (10.56')

Corner restored by Donald D. Lappala, RLS 12585 on 6/16/66 from the remains of the two original B.T.s. He set a 2" X 5' iron pipe monument with a 3" stamped brass cap and the following new bearing trees:
 Yellow Birch 4" N.68° W. 19.5'
 White Spruce 12" N.50° E. 17.5'
 Cedar 7" S.71° W. 28.7'

Corner recorded in Gogebic County USFS Liber, Page E-13 on 9/1/67.

B. Description of corner evidence found and/or method applied in restoring or reestablishing corner:

I recovered the monument as described and Mr. Lappala's B.T.s as follows:
 Yellow Birch 9" N.76° W. 19.77' (new nail)
 W. Spruce stub 19" N.55° E. 17.58' (new nail)
 Cedar 9" S.70 °W. 28.55' (new nail)

The original Hemlock B.T. is now a large series of root holes with Hemlock bark. The original Y. Birch B.T. is now large series of root holes with fragments of Yellow Birch bark.

Corner research on file with Gogebic County records.

C. Description of monument for corner and accessories established to perpetuate locating the position of the corner:

New bearing objects referenced:
 4" X 4" X 7' Cedar post North 4.24'
 Red Maple 4" N.58°E. 14.03'
 Steel sign rail 6' N.78° E. 2.58'

REGISTERED LAND SURVEYOR APPROVED
Richard L. Drahn 9/21/99
 COUNTY REGISTERED SURVEYOR



Signed by Richard L. Drahn Date September 12, 1999
 Surveyor's Michigan License No. 21564