

**SURVEY & REMONUMENTATION**

NOV 12 1997

COMMISSION

**LAND CORNER RECORDATION CERTIFICATE**  
Filing Requirement of Act 74, Mich. P.A. 1970

Register's Office }  
Gogebic County } ss.

Received for record the  
9<sup>TH</sup> day of OCTOBER  
A. D. 1997 at 11:00 o'clock  
A m., and recorded in  
Liber 6 of COMMER

on page 230  
Ramona Collins, Deputy  
Register of Deeds

Register of Deeds Stamp & File Number

For corners in

| Gogebic<br>(County)                | Located In:                              | Corner Code # |
|------------------------------------|--|---------------|
| 1. Public Land Survey              | Section 23, T <u>45</u> N, R <u>43</u> W | K-8           |
|                                    | T <u>   </u> R <u>   </u>                | <u>   </u>    |
|                                    | T <u>   </u> R <u>   </u>                | <u>   </u>    |
|                                    | T <u>   </u> R <u>   </u>                | <u>   </u>    |
|                                    | T <u>   </u> R <u>   </u>                | <u>   </u>    |
| 2. Property Controlling in Section | S <u>   </u> T <u>   </u> R <u>   </u>   | <u>   </u>    |
|                                    | S <u>   </u> T <u>   </u> R <u>   </u>   | <u>   </u>    |
| 3. Miscellaneous Property in Sec.  | S <u>   </u> T <u>   </u> R <u>   </u>   | <u>   </u>    |
|                                    | S <u>   </u> T <u>   </u> R <u>   </u>   | <u>   </u>    |

4. Lot No. \_\_\_\_\_, Recorded Plat \_\_\_\_\_  
5. Private Claims \_\_\_\_\_

1/4 corner to section 23 & 24, T45N, R43W.

I, John R. Garske, in a field survey on June/Aug. 19 97 hereby state that under requirements of P.A. 74, Michigan P.A. of 1970, the corner points mentioned in lines 1 and 2 above were in conformance with regulations and rules therefore as required in the current manual of survey instructions of the United States Department of the Interior, Bureau of Land Management or by a decree of a Court of Law and/or that the corner points mentioned in lines 3, 4 and 5 above were in conformance with the rules of the Michigan Board of Land Surveyors or by a Decree of a Court of Law; established, re-established, monumented, recovered, found as expressed below:

NOTE: Not more than 2 corners, all in the same town and range, may be recorded on this certificate.

|    | A  | B | C  | D | E  | F | G  | H | I  | J | K  | L | M |
|----|----|---|----|---|----|---|----|---|----|---|----|---|---|
| 1  |    |   |    |   |    |   |    |   |    |   |    |   |   |
| 2  | 6  |   | 5  |   | 4  |   | 3  |   | 2  |   | 1  |   |   |
| 3  |    |   |    |   |    |   |    |   |    |   |    |   |   |
| 4  | 7  |   | 8  |   | 9  |   | 10 |   | 11 |   | 12 |   |   |
| 5  |    |   |    |   |    |   |    |   |    |   |    |   |   |
| 6  | 18 |   | 17 |   | 16 |   | 15 |   | 14 |   | 13 |   |   |
| 7  |    |   |    |   |    |   |    |   |    |   |    |   |   |
| 8  | 19 |   | 20 |   | 21 |   | 22 |   | 23 |   | 24 |   |   |
| 9  |    |   |    |   |    |   |    |   |    |   |    |   |   |
| 10 | 30 |   | 29 |   | 28 |   | 27 |   | 26 |   | 25 |   |   |
| 11 |    |   |    |   |    |   |    |   |    |   |    |   |   |
| 12 | 31 |   | 32 |   | 33 |   | 34 |   | 35 |   | 36 |   |   |
| 13 |    |   |    |   |    |   |    |   |    |   |    |   |   |

A. Description of original monument and accessories and/or subsequent restoration:

Original survey by Algernon Merryweather, D.S. in 1852  
Set 1/4 corner at 40 chains.  
Original BT's:  
Cedar 7" S50°E 10 links  
Hemlock 30" S85°W 8 links  
@39.50 chains a stream 10 links wide course SW

B. Description of corner evidence found and/or method applied in restoring or reestablishing corner:

I established the 1/4 corner 33 feet north of the center of the small creek at the angle point where it's course is North east & southwest in accordance with the original Government notes. I could find no evidence of the original bearing trees, however the original survey line would have crossed the creek in only this location due to it's meandering course. The 1st creek call at 22.50 chains checks within 7 feet as shown on the sketch on the back, with that crossing limited to a 6 foot ± section where the course is southwest to check with GLO. Total distance is 2648.18m, 2640 GLO.

(Research on file)

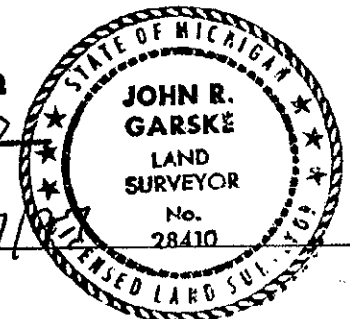
C. Description of monument for corner and accessories established to perpetuate locating the position of the corner:

I set a 2 1/2" dia. alum. pipe monument with a 3 1/4 dia. alum. cap stamped to identify the corner from which I established the following:

|                |       |            |
|----------------|-------|------------|
| 5" Sugar       | N05°E | 9.59 feet  |
| 5" Sugar       | S70°E | 10.83 feet |
| 6" Sugar       | S35°E | 8.91 feet  |
| Stel sign rail | N58°E | 2.21 feet  |

PEER GROUP APPROVED

Richard P. Drake 10/6/97  
COUNTY REPRESENTATIVE



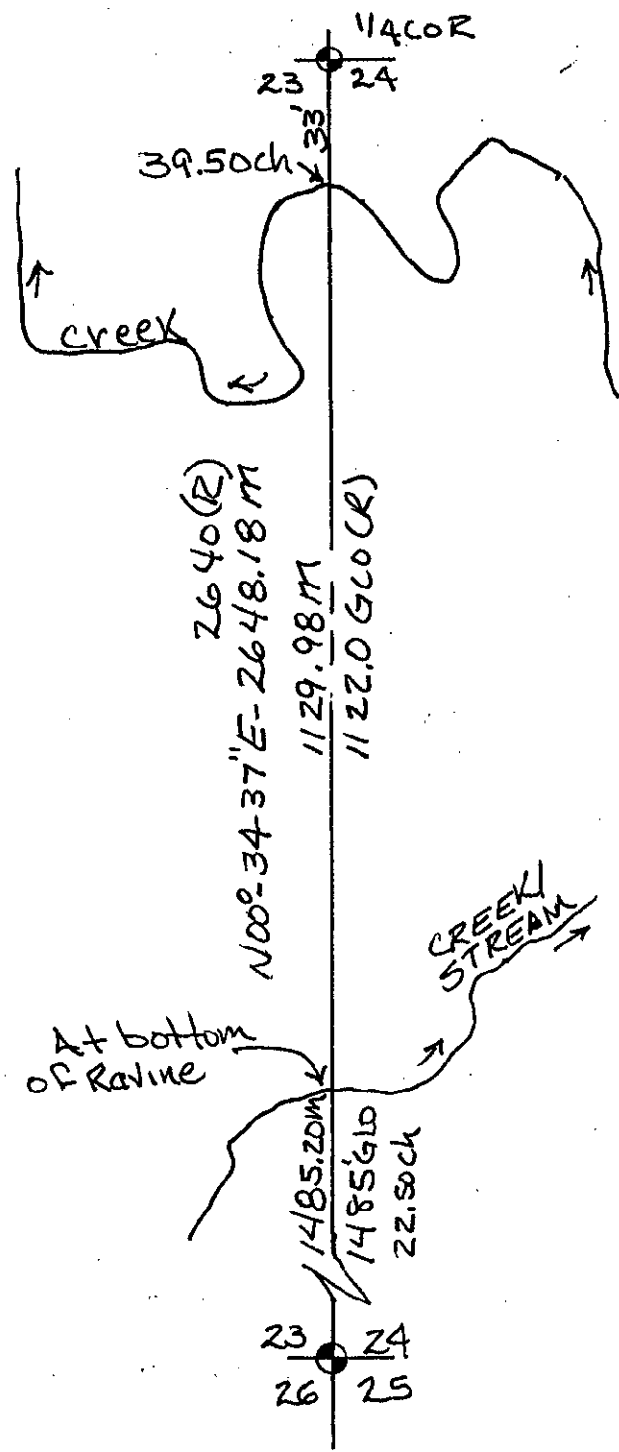
Signed by John R. Garske  
Surveyor's Michigan License No. 28410

Date 10/7/97

45-43/k-8

SKETCH

(K-8)  
1/4 COR.  
23 —●— 24  
T45N, R43W



SURVEY &  
REMONUMENTATION

NOV 12 1997

COMMISSION