

SURVEY & REMONUMENTATION

NOV 12 1997

COMMISSION

LAND CORNER RECORDATION CERTIFICATE
Filing Requirement of Act 74, Mich. P.A. 1970

Register's Office }
Gogebic County } ss.

For corners in
Gogebic
(County)

Located In: Section 26, 45N, 43W Corner Code # K-11

1. Public Land Survey	T	R	
	T	R	
	T	R	
	T	R	
2. Property Controlling in Section	S	T	R
	S	T	R
3. Miscellaneous Property in Sec.	S	T	R
	S	T	R

Received for record the
9th day of October
A. D. 1997 at 11:00 o'clock
A m., and recorded in
Liber 6 of CORNERS
on page 233
Ramona Collins, Deputy
Register of Deeds

Register of Deeds Stamp & File Number

4. Lot No. _____, Recorded Plat _____
5. Private Claims _____

Section corner to sections 25, 26, 35 and 36, T45N. R43W

I, John R. Garske, in a field survey on June/Aug, 1997 do hereby state that under requirements of P.A. 74, Michigan P.A. of 1970, the corner points mentioned in lines 1 and 2 above were in conformance with regulations and rules therefore as required in the current manual of survey instructions of the United States Department of the Interior, Bureau of Land Management or by a decree of a Court of Law and/or that the corner points mentioned in lines 3, 4 and 5 above were in conformance with the rules of the Michigan Board of Land Surveyors or by a Decree of a Court of Law; established, re-established, monumented, recovered, found as expressed below:

NOTE: Not more than 2 corners, all in the same town and range, may be recorded on this certificate.

	A	B	C	D	E	F	G	H	I	J	K	L	M
1													
2	6		5		4		3		2		1		
3													
4	7		8		9		10		11		12		
5													
6	18		17		16		15		14		13		
7													
8	19		20		21		22		23		24		
9													
10	30		29		28		27		26		25		
11													
12	31		32		33		34		35		36		
13													

A. Description of original monument and accessories and/or subsequent restoration:

Original survey by Algernon Merryweather, D.S. in 1852
Original BT's:
Hemlock 12" N55°E 15 links
Tamarack 8" S54°W 18 links
13.12 chains south to swamp

1935 - U>S>F>S> - form 87-4 indicates a wood post at corner.

B. Description of corner evidence found and/or method applied in restoring or reestablishing corner:

I was unable to locate this corner as it now falls in a beaver flooding of approximately 25 to 30 acres. I did find a wood post at the 1/4 corner to 26 & 35 and at the East 1/16th location as set in 1935. I doubled over the distance of 1314 feet to set the section corner at 2628.90 feet east of the 1/4 corner and 2613.05 feet south of the E1/4 corner. This location fits well with natural feature ties and best represents the original corner location.

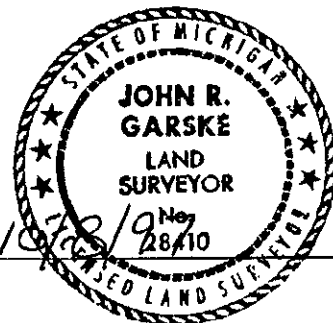
(See sketch on back)

(Research on file)

PEER GROUP APPROVED
Richard P. Dralun 10/18/97
COUNTY REGISTER

C. Description of monument for corner and accessories established to perpetuate locating the position of the corner:

At the corner position I set a 3/4" dia. x 84" long alum. rod with a 3 1/4" dia. alum. cap stamped to identify the corner. The corner is in waist deep water protruding approximately 1.4' above surface, I set witness corners as follows:
North on section line N00°-38'-33"W 442.88 feet
West on section line S89°-47'-32"W 1026.00 feet
both are 3/4" dia. x 36" long alum. rod with 3 1/4" dia. alum. caps.
Bearing trees:
7" B. Spruce S44°E 68.10 feet
7" B. Spruce S18°E 84.73 feet



Signed by John R. Garske
Surveyor's Michigan License No. 28410

Date 10/18/97 19 Nov 28/10

CORNERS ESTABLISHED:
EAST 1/16th

45-43/K-11

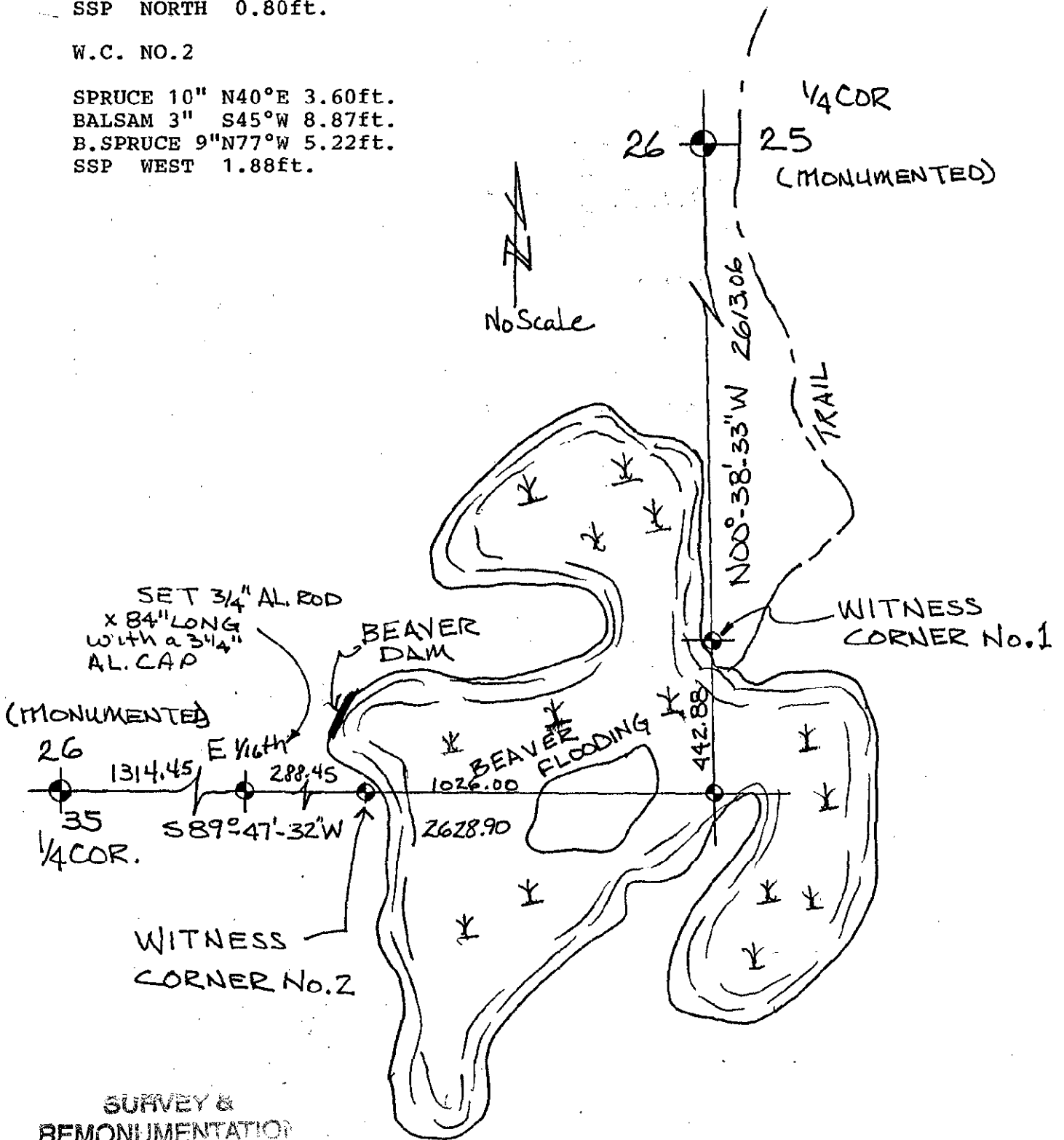
11" TAM. N80°E 11.96ft.
8" TAM. S26°W 15.03ft.
8" TAM. S72°W 29.35ft.
SSP NORTH 0.68ft.

W.C. NO. 1

R. PINE 13" N65°E 11.05ft.
R. PINE 6" S83°E 16.41ft.
R. PINE 11" S48°E 15.35ft.
SSP NORTH 0.80ft.

W.C. NO. 2

SPRUCE 10" N40°E 3.60ft.
BALSAM 3" S45°W 8.87ft.
B. SPRUCE 9" N77°W 5.22ft.
SSP WEST 1.88ft.



SURVEY &
REMONUMENTATION

NOV 12 1997

COMMISSION