

**SURVEY &
REMONUMENTATION**

SEP 08 1998

SECTION

LAND CORNER RECORDATION CERTIFICATE
Filing Requirement of Act 74, Mich. P.A. 1970

For corners in

Gogebic

(County)

Located In:

Corner Code #

- | | | |
|------------------------------------|----------------------------|------------|
| 1. Public Land Survey | T <u>46</u> NR <u>43</u> W | <u>D-3</u> |
| | T ___ R ___ | _____ |
| | T ___ R ___ | _____ |
| | T ___ R ___ | _____ |
| 2. Property Controlling in Section | S ___ T ___ R ___ | _____ |
| | S ___ T ___ R ___ | _____ |
| 3. Miscellaneous Property in Sec. | S ___ T ___ R ___ | _____ |
| | S ___ T ___ R ___ | _____ |

Register's Office }
Gogebic County } ss.

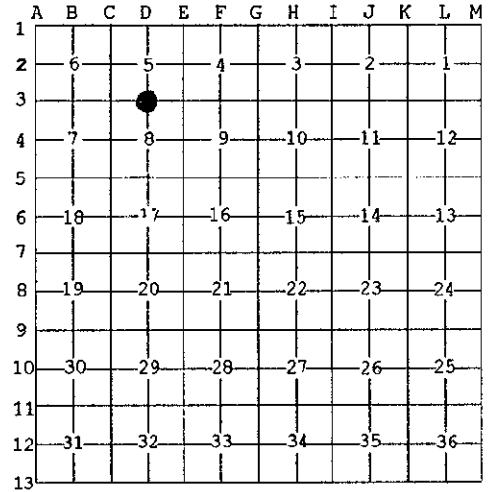
Received for record the
14TH day of MAY
A. D. 1998 at 3:00 o'clock
P. M., and recorded in
Liber 6 of CORNERS
on page 336
Ramona Collins, Deputy
Register of Deeds

Register of Deeds Stamp & File Number

4. Lot No. _____, Recorded Plat _____
5. Private Claims _____

1/4 Corner common to sec's 5 & 8, T46N, R43W

I, John P. Goss, in a field survey on May 1, 1998 do hereby state that under requirements of P.A. 74, Michigan P.A. of 1970, the corner points mentioned in lines 1 and 2 above were in conformance with regulations and rules therefore as required in the current manual of survey instructions of the United States Department of the Interior, Bureau of Land Management or by a decree of a Court of Law and /or that the corner points mentioned in lines 3, 4 and 5 above were in conformance with the rules of the Michigan Board of Land Surveyors or by a Decree of a Court of Law; established, re-established, monumented, recovered, found as expressed below:



NOTE: Not more than 2 corners, all in the same town and range, may be recorded on this certificate.

A. Description of original monument and accessories and/or subsequent restoration:

Corner established by Austin Burt, in August 1851.

Original bearing trees: Sugar Maple 8" S 36° W 85 links
Y. Birch 16" N 31° E 25 links

John R. Garske, RLS, restored this corner by single proportional measurement on October 17, 1984. He set a 2" O.D. x 30" iron pipe with brass cap to indicated the corner position. He established the following references:

6" x 6" corner fence post N 12° E 37.52'
8" Aspen S 70° E 34.69'
8" Aspen Due S. 74.82'

B. Description of corner evidence found and/or method applied in restoring or reestablishing corner:

He recorded said corner in Liber 2, page 608 of Land Corners for Gogebic County.

Found John R. Garske corner monument and witnesses.

I updated the corner monument and accessories as noted below to state and county specification.

Act 74 research on file.

PEER GROUP APPROVED
Richard L. Deahn 5/13/98
COUNTY REPRESENTATIVE

C. Description of monument for corner and accessories established to perpetuate locating the position of the corner:

From the 2" I.D. iron pipe with brass cap stamped to read: T.46 N., R.43 W.; 1/4; S-5, S-8; 1984; R.L.S. 28410, from which I established the new and existing reference objects.

6" x 6" Corner Fence Post N 12° E 37.52'
14" Aspen S 70° E 34.69'
15" Aspen Due S. 74.82'
6" Aspen S 45° E 30.61'
6" Rail & sign Due N. 2.3' (to face)

(All measurement to nail in side of tree)

Signed by John P. Goss
Surveyor's Michigan License No. 23509

Date May 2, 1998



Fed. No. E-7