

SURVEY & MONUMENTATION

OCT 03 1996

COMMISSION

LAND CORNER RECORDATION CERTIFICATE
Filing Requirement of Act 74, Mich. P.A. 1970

Register's Office }
 Gogebic County } ss.

For corners in Gogebic (County) Located in: Corner Code #

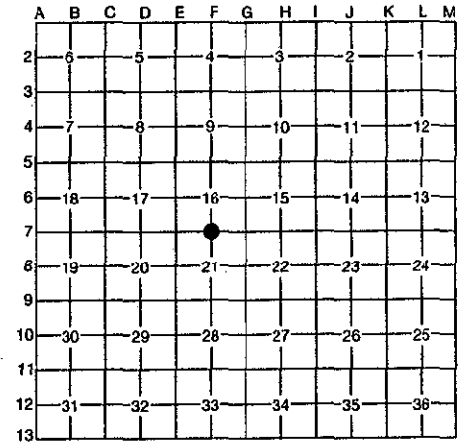
1. Public Land Survey	T <u>46N</u> R <u>R43W</u>	<u>E-7</u>
	T _____ R _____	_____
	T _____ R _____	_____
	T _____ R _____	_____
2. Property Controlling in Section	S _____ T _____ R _____	_____
	S _____ T _____ R _____	_____
3. Miscellaneous Property in Section	S _____ T _____ R _____	_____
	S _____ T _____ R _____	_____

Received for record the 23RD day of FEB A. D. 1996 at 1:35 o'clock P m., and recorded in Liber 5 of CORNERS on page 315
Ramona Collins, Deputy
 Register of Deeds
 Register of Deeds Stamp & File Number

4. Lot No. _____, Recorded Plat _____
 5. Private Claims _____

One-quarter corner common to Section 16 and 21, T46N, R43W.

I, John R. Garske, in a field survey on November 9, 1995, do hereby certify that under requirements of P.A. 74, Michigan P.A. of 1970, the corner points mentioned in lines 1 and 2 above were in conformance with regulations and rules therefore as required in the current manual of survey instructions of the United States Department of the Interior, Bureau of Land Management or by a decree of a Court of Law and/or that the corner points mentioned in lines 3, 4 and 5 above were in conformance with the rules of the Michigan Board of Professional Surveyors or by a Decree of a Court of Law; established, re-established, monumented, re-monumented, recovered, found as expressed below:



NOTE: Not more than 4 corners, all in the same town and range, may be recorded on this certificate.

A. Description of original monument and accessories and/or subsequent restoration:

- On July 17, 1851, Austin Burt, U.S.D.S., set corner post from which a 7" cedar bears S02°E - 18 links; 10" cedar N14°W - 19 links.
- On February 16, 1987, Robert A. Mick, RLS 16936, reestablished the corner position by single proportionate measure. He set a 1 1/2" P.K. nail at the corner position in asphalt from which he set two 2" I.D. x 30" aluminum reference monuments with 3 1/2" aluminum caps and iron sign posts stamped to read: T46N, R43W, R.M., 1/4, S-16, S-21, N29°E, 44.05', 1987, RLS 16936; T46N, R43W, R.M., 1/4, S-16, S-21, N50°W, 60.85', 1987, RLS 16936; bearing tree: 8" B. ash - N17°E, 50.86'. Corner is recorded in Liber 3 of land corners, page 5.

B. Description of corner evidence found and/or method applied in restoring or reestablishing corner:

I found the P.K. nail and accessories set by Mick as described above and updated them to County and State spec's as noted below.

Act 74 research on file at County Register of Deeds office. (SEE SKETCH ON BACK)

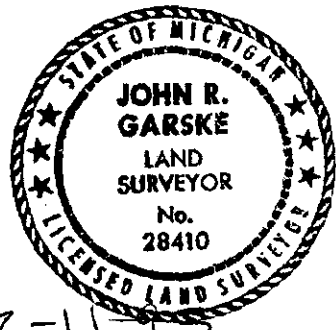
C. Description of monument for corner and accessories established to perpetuate locating the position of the corner:

I used the P.K. nail set by Mick at the corner location and established the following bearing trees and reference monuments: I used the two reference monuments as described by Mick above.

- Bearing trees:
- 10" B. ash - N19°E - 50.40 feet (existing)
 - 13" ash - N16°W - 67.07 feet (new)

- Reference Monuments: (existing)
- 1- S50°E - 60.85 feet
Sign Post - S30°E - 0.99 feet
 - 2- S29°W - 44.05 feet
Sign Post - S29°W - 0.93 feet

PEER GROUP APPROVED
Richard R. Deahn 12/14/95
 COUNTY REPRESENTATIVE



Signed by John R. Garske Date 12-11-95

Surveyor's Michigan License No. 28410

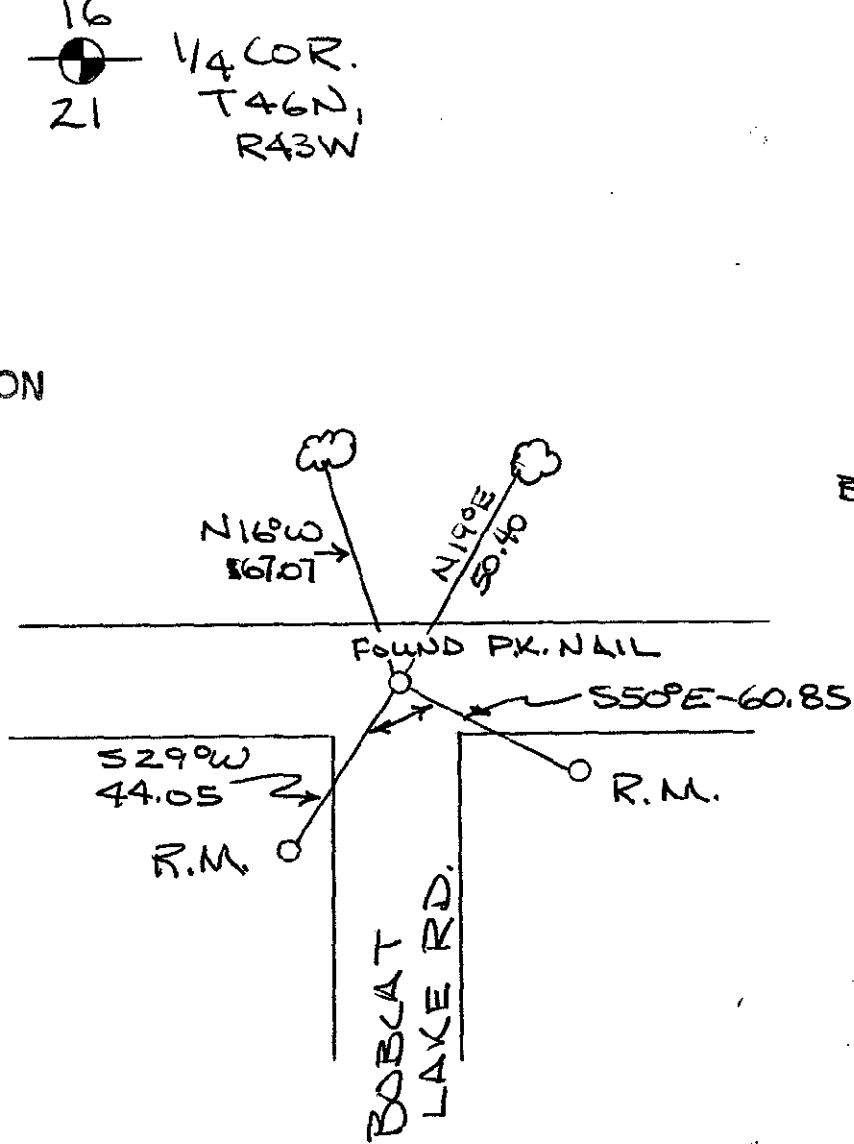
SKETCH

16
21
1/4 COR.
T46N,
R43W

SURVEY &
REMONUMENTATION

OCT 03 1996

COMMISSION



No Scale
BEARINGS
ARE
MAGNETIC