

MAR 02 2000

LAND CORNER RECORDATION CERTIFICATE
Filing Requirement of Act 74, Mich. P.A. 1970

Register's Office } ss.
Gogebic County }

Received for record the
12th day of MAY
A. D. 1999 at 10:50 o'clock
A. m., and recorded in
Liber 7 of CORNERS
on page 116
Romana Collins Deputy
Register of Deeds

SECTION
For corners in

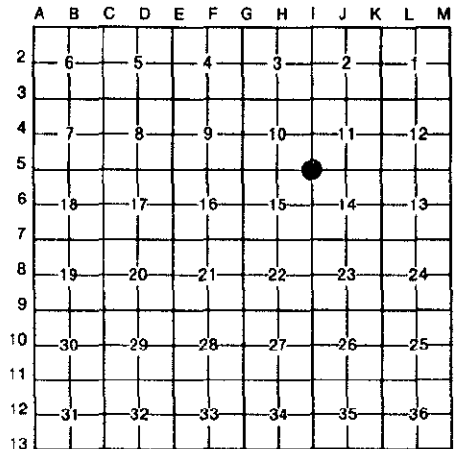
Table with columns: Gogebic (County), Located In, Corner Code #. Rows include Public Land Survey, Property Controlling in Section, Miscellaneous Property in Sec.

Register of Deeds Stamp & File Number

4. Lot No. , Recorded Plat
5. Private Claims

Section Corner 10, 11, 14 & 15; T.46 N., R.43 W.

Richard L. Drahn, in a field survey on April 8, 1999 do hereby certify that under requirements of P.A. 74, Michigan P.A. of 1970, the corner points mentioned in lines 1 and 2 above were in conformance with regulations and rules therefore as required in the current manual of survey instructions of the United States Department of the Interior, Bureau of Land Management or by a decree of a Court of Law and/or that the corner points mentioned in lines 3, 4 and 5 above were in conformance with the rules of the Michigan Board of Land Surveyors or by a Decree of a Court of Law; established, re-established, monumented, re-monumented, recovered, found as expressed below:



NOTE: Not more than 4 corners, all in the same town and range, may be recorded on this certificate.

A. Description of original monument and accessories and/or subsequent restoration:

Corner established by Austin Burt on 9/6/1851. Original Corner --- Hemlock 12". Original B.T.s --- Sugar 20" S.76 W. 14 links (9.24') --- Y. Birch 22" N.56 E. 20 links (13.20')---

Corner restored by Richard L. Drahn, RLS 21564, on 6/17/87 by retracement measurement east and west to recovered line trees and recovered corners north south, east and west.

Corner recorded in Gogebic County Liber 3, Page 48 on 7/21/88.

He set a 2" X 36" iron pipe with a 3" stamped brass cap and the following B. Description of corner evidence found and/or method applied in restoring or reestablishing corner:

new bearing trees.

Table listing new bearing trees: 7" Sugar Maple N.18 E. 52.73', 5" White Ash N.75 E. 42.55', 6" Sugar Maple S.39 W. 13.93', 6' Steel sign rail N.20 N.E. 1.6'

I recovered the monument as described and the bearing trees as follows:

Table listing recovered bearing trees: 10" Sugar Maple N.17 E. 52.97' (new nail), 8" White Ash N.75 E. 42.41' (new nail), 8" Sugar Maple S.40 W. 13.97', 6' Steel sign rail N.20 E. 1.55'

No evidence of the original corner or bearing trees recovered. Corner research on file with Gogebic County records.

C. Description of monument for corner and accessories established to perpetuate locating the position of the corner:

New bearing tree referenced:

Table listing new bearing tree: 4" White Ash S.32 E. 18.35'

Richard L. Drahn 5/11/99
COUNTY



Signed by Richard L. Drahn

Date April 11, 1999

Surveyor's Michigan License No. 21564