

MAR 02 2000

LAND CORNER RECORDATION CERTIFICATE
Filing Requirement of Act 74, Mich. P.A. 1970

Register's Office }
Gogebic County } 88.

SECTION

For corners in

Gogebic
(County)

Located In:

Corner Code ##

- 1. Public Land Survey T 46N R 43W J-5
 T _____ R _____
 T _____ R _____
 T _____ R _____
- 2. Property Controlling S _____ T _____ R _____
 in Section S _____ T _____ R _____
- 3. Miscellaneous S _____ T _____ R _____
 Property in Sec. S _____ T _____ R _____

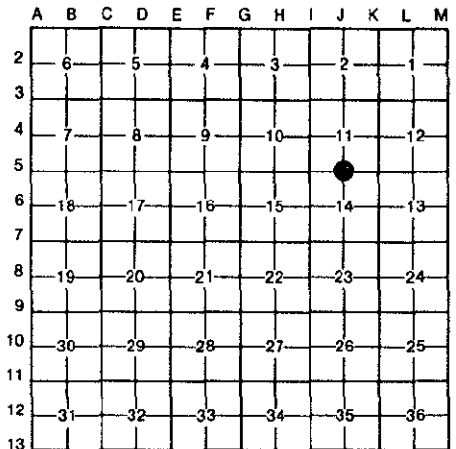
Received for record the
12th day of MAY
 A. D. 1999 at 10:45 o'clock
A m., and recorded in
 Liber 7 of CONCORD
 on page 120
Bernona Collins, Deputy
 Register of Deeds

Register of Deeds Stamp & File Number

- 4. Lot No. _____, Recorded Plat _____
- 5. Private Claims _____

Quarter Corner 11 & 14; T.46 N., R.43 W.

Richard L. Drahn, in a field survey on April 8, 1999, do hereby certify that under requirements of P.A. 74, Michigan P.A. of 1970, the corner points mentioned in lines 1 and 2 above were in conformance with regulations and rules therefore as required in the current manual of survey instructions of the United States Department of the Interior, Bureau of Land Management or by a decree of a Court of Law and/or that the corner points mentioned in lines 3, 4 and 5 above were in conformance with the rules of the Michigan Board of Land Surveyors or by a Decree of a Court of Law; established, re-established, monumented, re-monumented, recovered, found as expressed below:



NOTE: Not more than 4 corners, all in the same town and range, may be recorded on this certificate.

A. Description of original monument and accessories and/or subsequent restoration:

Corner established by Austin Burt on 9/6/1851. Original B.T.s --- Fir 10" S.45 W. 2 links (1.32') --- Sugar 12" N.53 E. 34 links (22.44')---
 Corner restored by Richard L. Drahn, RLS 21564, on 4/12/88 by single proportionate methods.

He set a 2" X 30" aluminum pipe with a 3 1/4" stamped aluminum cap and the following new bearing trees:

- 12" Sugar Maple N.19 E. 25.89'
- 13" Red Maple S.27 E. 45.40'
- 8" Sugar Maple S.73 W. 42.63'

B. Description of corner evidence found and/or method applied in restoring or reestablishing corner:

- 6' Steel sign rail S.33 E. 3.4'

Corner recorded in Gogebic County Liber 3, Page 277 on 2/12/89.

Corner research on file with Gogebic County records.

Recovered the monument as described and the bearing trees as follows:

- 13" Sugar Maple N.18 E. 25.90'
- 15" Twin Red Maple S.31 E. 44.96' (new nail)
- 10" Sugar Maple S.73 W. 42.63'
- 6' Steel sign rail S.29 E. 3.42'

No evidence remains of the original corner post or bearing trees.

C. Description of monument for corner and accessories established to perpetuate locating the position of the corner:

New bearing tree referenced:

- 11" Basswood S.82 E. 26.34'

Richard L. Drahn 5/11/99
 COUNTY SURVEYOR



Signed by Richard L. Drahn Date April 11, 1999

Surveyor's Michigan License No. 21564