

LAND CORNER RECORDATION CERTIFICATE
 Filing Requirement of Act 74, Mich. P.A. 1970

Register's Office }
 Gogebic County } ss.

Received for record the
26th day of MAY
 A. D. 2000 at 10:40 o'clock
A m., and recorded in
 Liber 7 of CORNERS
 at page 295
Cheryl Ruppe
 Dep. Register of Deeds

For corners in

Gogebic Located In: _____ Corner Code # _____
 (County)

1. Public Land Survey T46 N R44 W. E7
 T _____ R _____ SURVEY &
 T _____ R _____ MONUMENTATION
 T _____ R _____

2. Property Controlling S _____ T _____ R _____ JAN 05 2001
 in Section S _____ T _____ R _____

3. Miscellaneous S _____ T _____ R _____
 Property in Sec. S _____ T _____ R _____ SECTION

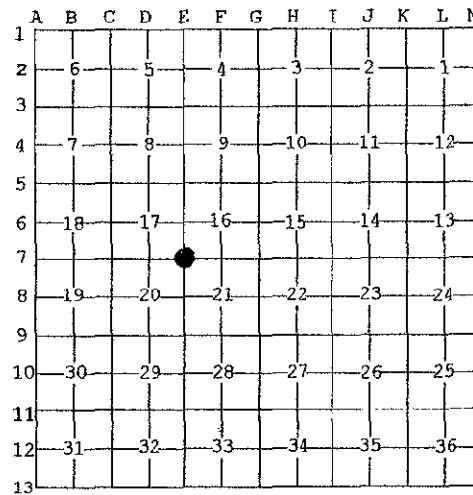
Register of Deeds Stamp & File Number

4. Lot No. _____, Recorded Plat _____
 5. Private Claims _____

Section Corner 16, 17, 20 & 21; T.46 N., R.44 W.

I, Richard L. Drahn, in a field survey on April 10, 2000 do hereby state that under requirements of P.A. 74, Michigan P.A. of 1970, the corner points mentioned in lines 1 and 2 above were in conformance with regulations and rules therefore as required in the current manual of survey instructions of the United States Department of the Interior, Bureau of Land Management or by a decree of a Court of Law and /or that the corner points mentioned in lines 3, 4 and 5 above were in conformance with the rules of the Michigan Board of Land Surveyors or by a Decree of a Court of Law; established, re-established, monumented, recovered, found as expressed below:

NOTE: Not more than 2 corners, all in the same town and range, may be recorded on this certificate.



A. Description of original monument and accessories and/or subsequent restoration:
 Original corner established by Austin Burt on 8/14/1851. Original bearing trees:
 Yellow Birch 12" S.24° W. 58 links (38.28')
 Maple 8" N.04° E. 16 links (10.56')

Corner restored by Richard L. Drahn, RLS 21564 on 10/21/81 from the remains of the two original B.T.s, from a line tree east and from retracement measurement east, west and north to recovered corners. He set a 2" X 4' iron pipe with a 3" stamped brass cap and the following new bearing trees:

Hemlock	15"	N.89° W.	69.58'
Red Maple	8"	N.25° W.	50.88'
Sugar Maple	6"	S.27° E.	33.15'
Steel sign rail	6'	N.76° E.	1.7'

Corner recorded in Gogebic County Liber 2, Page 220 on 3/10/82.

B. Description of corner evidence found and/or method applied in restoring or reestablishing corner:

Corner research on file with Gogebic County records.

Recovered the monument as described and the bearing trees as follows:

Hemlock	16"	West	69.58'	(new nail)
Red Maple	11"	N.26° W.	50.80'	(new nail)
Sugar Maple	9"	S.28° E.	33.15'	(new nail)
Steel sign rail	6'	N.73° E.	1.76'	

Only depressions remain from the original bearing trees.

C. Description of monument for corner and accessories established to perpetuate locating the position of the corner:

New bearing tree established:
 Black Cherry 6" N.60° E. 11.24'

DEED GROUP APPROVED
Richard L. Drahn 05/24/00
 COUNTY REGISTER & CLERK



Signed by Richard L. Drahn Date May 2, 2000

Surveyor's Michigan License No. 21564