

LAND CORNER RECORDATION CERTIFICATE  
Filing Requirement of Act 74, Mich. P.A. 1970

Register's Office }  
Gogebic County } ss.

For corners in

Gogebic  
(County)

Located In:

Corner Code #

1. Public Land Survey T46 N R44 W. G-3  
T      R      **SURVEY &**  
T      R      **MONUMENTATION**  
T      R       
2. Property Controlling in Section S      T      R      **JAN 05 2001**  
S      T      R       
3. Miscellaneous S      T      R       
Property in Sec. S      T      R      **SECTION**

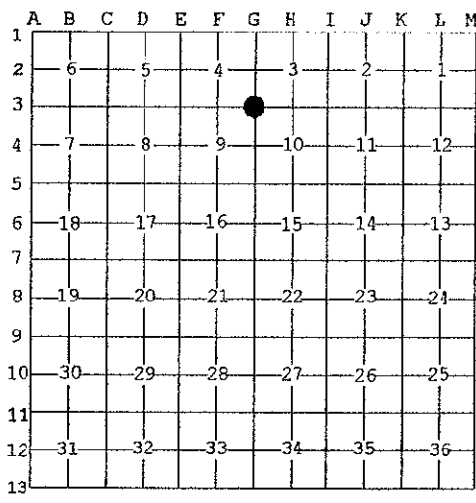
Received for record the  
26<sup>TH</sup> day of MAY  
A. D. 2000 at 10:40 o'clock  
A m., and recorded in  
Liber 7 of CORNERS  
@ page 301  
Cheryl Ruppe  
Dep. Register of Deeds

Register of Deeds Stamp & File Number

4. Lot No. \_\_\_\_\_, Recorded Plat \_\_\_\_\_  
5. Private Claims \_\_\_\_\_

Section Corner 3, 4, 9 & 10; T.46 N., R.44 W.

I, Richard L. Drahn, in a field survey on March 2, 2000 do hereby state that under requirements of P.A. 74, Michigan P.A. of 1970, the corner points mentioned in lines 1 and 2 above were in conformance with regulations and rules therefore as required in the current manual of survey instructions of the United States Department of the Interior, Bureau of Land Management or by a decree of a Court of Law and /or that the corner points mentioned in lines 3, 4 and 5 above were in conformance with the rules of the Michigan Board of Land Surveyors or by a Decree of a Court of Law; established, re-established, monumented, recovered, found as expressed below:



**NOTE: Not more than 2 corners, all in the same town and range, may be recorded on this certificate.**

A. Description of original monument and accessories and/or subsequent restoration:

Original corner established by Austin Burt on 8/15/1851. Original bearing trees:

- Hemlock 8" S.36° E. 31 links (20.46')
- Cedar 8" N.32° W. 13 links (8.58')

Corner restored by Richard L. Drahn, RLS 21564 on 10/5/81 from the stump hole of the Hemlock and the root mass of the Cedar B.T. and natural feature ties north, south, east and west. He set a 2" X 4' iron pipe with a 3" stamped brass cap and the following new B.T.s:

- Black Ash 11" N.53° E. 17.11'
- Black Ash 6" S.75° W. 13.93'
- "X" chiseled on northerly edge of a boulder bears S.24° E., 2.20'
- Steel sign rail 7' N.05° W. 2.45'

Corner recorded in Gogebic County Liber 2, Page 228 on 3/10/82.

B. Description of corner evidence found and/or method applied in restoring or reestablishing corner:

Corner research on file with Gogebic County records.

Recovered the monument as described and the bearing trees as follows:

- Black Ash 13' N.56° E. 17.14' (new nail)
- Black Ash 8' S.74° W. 13.86' (new nail)
- "X" in rock S.23° E. 2.24'
- Steel sign rail 7' N.02° W. 2.28'

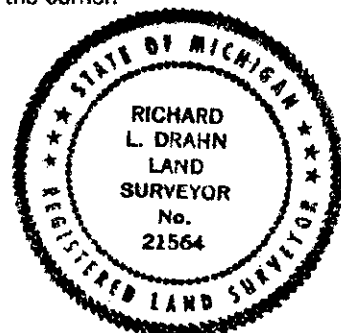
Only a depression remains from the original Hemlock B.T.; no evidence remains of the original Cedar

C. Description of monument for corner and accessories established to perpetuate locating the position of the corner:

New bearing tree established:

- Black Ash 8" N.30°W. 25.06'

FREE GROUP APPROVAL  
Richard L. Drahn 05/24/00  
COURT RECORDED



Signed by Richard L. Drahn Date May 2, 2000

Surveyor's Michigan License No. 21564