

LAND CORNER RECORDATION CERTIFICATE
Filing Requirement of Act 74, Mich. P.A. 1970

For corners in

<u>Gogebic</u> (County)	Located In:	Corner Code #
1. Public Land Survey	<u>T46 N R44 W.</u>	<u>G-5</u>
	T <u> </u> R <u> </u>	
	T <u> </u> R <u> </u>	SURVEY &
	T <u> </u> R <u> </u>	REMONUMENTATION
2. Property Controlling in Section	S <u> </u> T <u> </u> R <u> </u>	<u>JAN 05 2001</u>
3. Miscellaneous Property in Sec.	S <u> </u> T <u> </u> R <u> </u>	<u>SECTION</u>

Register's Office }
 Gogebic County } ss.

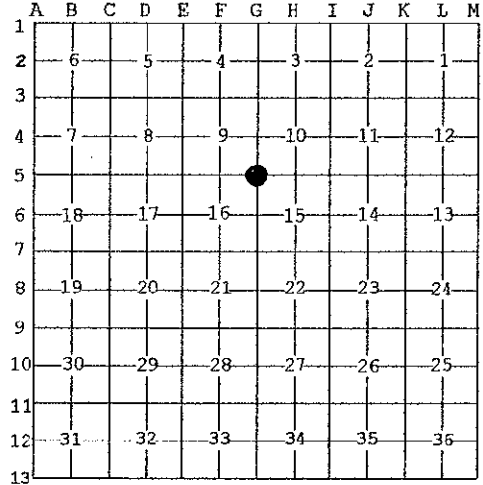
Received for record the
26TH day of MAY
 A. D. 2000 at 10:50 o'clock
A m., and recorded in
 Liber 7 of CORNERS
 on page 303
Cheryl Rippe
 Dep. Register of Deeds

Register of Deeds Stamp & File Number

4. Lot No. _____, Recorded Plat _____
 5. Private Claims _____

Section corner 9, 10, 15 & 16; T.46 N., R.44 W.

I, Richard L. Drahn, in a field survey on May 4, 2000 do hereby state that under requirements of P.A. 74, Michigan P.A. of 1970, the corner points mentioned in lines 1 and 2 above were in conformance with regulations and rules therefore as required in the current manual of survey instructions of the United States Department of the Interior, Bureau of Land Management or by a decree of a Court of Law and /or that the corner points mentioned in lines 3, 4 and 5 above were in conformance with the rules of the Michigan Board of Land Surveyors or by a Decree of a Court of Law; established, re-established, monumented, recovered, found as expressed below:



NOTE: Not more than 2 corners, all in the same town and range, may be recorded on this certificate.

A. Description of original monument and accessories and/or subsequent restoration:

Original corner established by Austin Burt on 8/15/1851. Original bearing trees:

Hemlock	12"	S.47° E.	49 links (32.34')
Y. Birch	12"	N.61° W.	32 links (21.12')

Corner restored by Richard L. Drahn, RLS 21564 on 4/18/82 by theodolite control through recovered line trees, a natural feature tie and recovered corners south, north and east. He set a 2" X 30" aluminum pipe with a 3 1/4" stamped aluminum cap and the following:

Red Maple	7"	N.24° W.	10.98'
Sugar Maple	6"	S.75° E.	10.94'
White Spruce	14"	S.22° W.	39.66'
Steel sign rail	6'	N.58° W.	1.9'

Corner recorded in Gogebic County Liber 2, Page 380 on 3/15/83.

B. Description of corner evidence found and/or method applied in restoring or reestablishing corner:

Corner research on file with Gogebic County records.

Recovered the monument as described and the bearing trees as follows:

Red Maple	9"	N.22° W.	10.95'
Sugar Maple	7"	S.74° E.	10.95'
Balsam	16"	S.24° W.	39.61'
Steel sign rail	6'	N.60° W.	1.83'

No evidence of the original bearing trees remain.

C. Description of monument for corner and accessories established to perpetuate locating the position of the corner:

New bearing tree referenced:

Twin Red Maple	6"	N.89° W.	24.37'
----------------	----	----------	--------

PEER GROUP APPROVED
Richard L. Drahn 05/24/00
 COUNTY REGISTER & TAP



Signed by Richard L. Drahn Date May 12, 2000

Surveyor's Michigan License No. 21564