

SURVEY & REMONUMENTATION

SEP 08 1998

SECTION

LAND CORNER RECORDATION CERTIFICATE
Filing Requirement of Act 74, Mich. P.A. 1970

Register's Office }
Gogebic County } ss.

For corners in

Gogebic

(County)

Located In:

Corner Code #

- | | | |
|------------------------------------|-----------------------------|------------|
| 1. Public Land Survey | T <u>46</u> N R <u>45</u> W | <u>E-5</u> |
| | T ___ R ___ | _____ |
| | T ___ R ___ | _____ |
| | T ___ R ___ | _____ |
| 2. Property Controlling in Section | S ___ T ___ R ___ | _____ |
| | S ___ T ___ R ___ | _____ |
| 3. Miscellaneous Property in Sec. | S ___ T ___ R ___ | _____ |
| | S ___ T ___ R ___ | _____ |

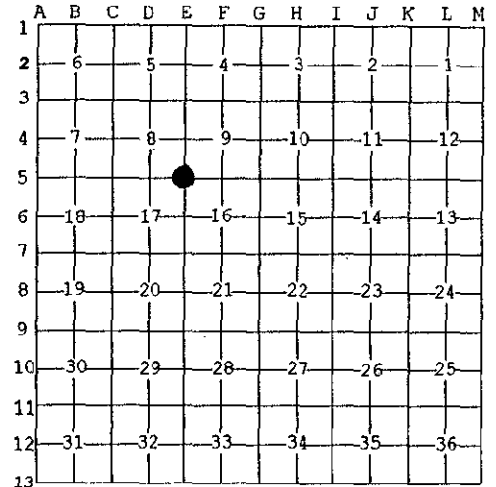
Received for record the
14th day of MAY
A. D. 1998 at 3:10 o'clock
P m., and recorded in
Liber 6 of CORNERS
on page 357
Ramona Collins Deputy
Register of Deeds

Register of Deeds Stamp & File Number

4. Lot No. _____, Recorded Plat _____
5. Private Claims _____

S.C. comm. to sec's. 8, 9, 16 & 17; T.46N, R45W

I, John P. Goss, in a field survey on March 17 19 98 do hereby state that under requirements of P.A. 74, Michigan P.A. of 1970, the corner points mentioned in lines 1 and 2 above were in conformance with regulations and rules therefore as required in the current manual of survey instructions of the United States Department of the Interior, Bureau of Land Management or by a decree of a Court of Law and for that the corner points mentioned in lines 3, 4 and 5 above were in conformance with the rules of the Michigan Board of Land Surveyors or by a Decree of a Court of Law; established, re-established, monumented, recovered, found as expressed below:



NOTE: Not more than 2 corners, all in the same town and range, may be recorded on this certificate.

A. Description of original monument and accessories and/or subsequent restoration:

Original corner established by Austin Burt on July 22, 1851. Set post.
Original bearing trees: Hemlock 20" S 47° W 11 links (7.26')
Y. Birch 16" N 40° E 10 links (6.60')

In April 1960, Carl Koistenen of MDOT found a 1 1/4" iron pipe with brass cap. He established the following witnesses.

1. 5" Maple South 10.32'
2. 4" Maple S 85° E 11.11'
3. 4" Maple N 40° W 7.70'

B. Description of corner evidence found and/or method applied in restoring or reestablishing corner:

I found C. Koistenen called for iron pipe and witnesses.
Found original B.T. Yellow Birch now a stump at ground level.
Found the following location tag on trees: 1. By Gogebic County F.D. 6-24-86.
2. By America Can Co. 4-22-87. 3. By Northern Paper Mill 4-15-57.

I updated the corner monument and accessories as noted below to State and county specification.

Act 74 research on file.

C. Description of monument for corner and accessories established to perpetuate locating the position of the corner:

I replaced the 1 1/4" by 36" iron pipe with a 3/4" by 48" marsh rod with a 3/4" Aluminum cap at corner position which read: County Remonumentation; T.46 N., R.45 W.: S-8, S-9, S-16, S-17; 1998, P.S. 23509. I established the following bearing trees and reference objects.

1. 11" Maple S 20° W 10.36'
 2. 10" Maple S 67° E 11.14'
 3. 6" Maple N 40° W 7.74'
 4. 6' Rail & sign
Due West 1.38' (to face)
- (All distance to nail in side of tree)

Signed by John P. Goss
Surveyor's Michigan License No. 23509

Date March 17, 1998

PEER GROUP APPROVED
Richard P. Drain 5/13/98
COUNTY REGISTER



Fed. No. J-9