

SURVEY & REMONUMENTATION

SEP 08 1998

LAND CORNER RECORDATION CERTIFICATE
Filing Requirement of Act 74, Mich. P.A. 1970

Register's Office }
Gogebic County } 86.

For corners in

Gogebic SECTION Located In: Corner Code #

ERWIN TOWNSHIP

1. Public Land Survey

T 46 N R 47 W M-07
T 46 N R 46 W A-07

2. Property Controlling in Section

S T R
S T R

3. Miscellaneous Property in Sec.

S T R
S T R

4. Lot No. , Recorded Plat

5. Private Claims

SECTION CORNER TO 13 & 24, AND 18 & 19 ; T 46 N, R 47 W, R 46 W RESPECTIVELY

I, JOHN R. GARSKE, in a field survey on JUNE 17, 19 98 do hereby state that under requirements of P.A. 74, Michigan P.A. of 1970, the corner points mentioned in lines 1 and 2 above were in conformance with regulations and rules therefore as required in the current manual of survey instructions of the United States Department of the Interior, Bureau of Land Management or by a decree of a Court of Law and/or that the corner points mentioned in lines 3, 4 and 5 above were in conformance with the rules of the Michigan Board of Land Surveyors or by a Decree of a Court of Law, established, re-established, monumented, recovered, found as expressed below:

NOTE: Not more than 2 corners, all in the same town and range, may be recorded on this certificate

A. Description of original monument and accessories and/or subsequent restoration:

ORIGINAL CORNER ESTABLISHED BY WILLIAM A. BURT - SEPT., 1847

ORIGINAL CORNER: WOOD POST

ORIGINAL BEARING TREES:

CEDAR 14" N 59° E 14 LINKS (9.24 feet)
HEMLOCK 16" N 67° W 20 LINKS (13.20 feet)

PEER GROUP APPROVAL

Richard L. Widm 8/19/98
COUNTY REGISTER

B. Description of corner evidence found and/or method applied in restoring or reestablishing corner:

NO ORIGINAL EVIDENCE WAS FOUND.

CENTERLINE OF KARANAN RD. AND THE CENTERLINE OF SOUTH DAVIS RD. WERE THE ONLY NOTICABLE EVIDENCE AS TO THE LOCATION OF THE CORNER. AT THE INTERSECTION OF THE CENTERLINES THERE WERE NO EXISTING MONUMENTS. ALL THE AVAILABLE EVIDENCE POINTED TO THIS INTERSECTION AS THE PROPER CORNER LOCATION.

RECORD RESEARCH ON FILE (see SKETCH ON BACK)

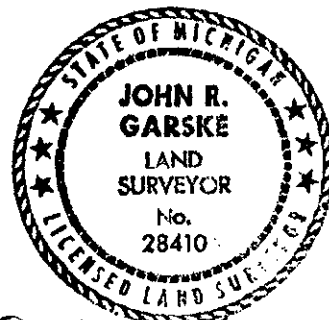
C. Description of monument for corner and accessories established to perpetuate locating the position of the corner:

AT THE CORNER LOCATION I SET A 10" X 5/8" IRON ROD WITH A STAMPED BRASS CAP, FROM WHICH I

ESTABLISHED THE FOLLOWING NEW

BLAZED AND SCRIBED BEARING TREES/ WITNESSES:
(all measurements taken to nail set in tree)

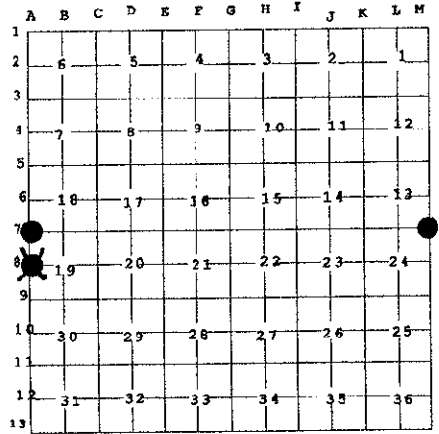
REF. MON. W/CAP 2 1/2" N 84° W 30.80 feet
JACK PINE 7" S 34° E 51.00 feet
TAMARACK 10" S 38° W 50.49 feet
POWER POLE N 43° E 48.81 feet



Signed by *John R. Garske*

Date 8-17-98

Surveyor's Michigan License No. P.S. 28410



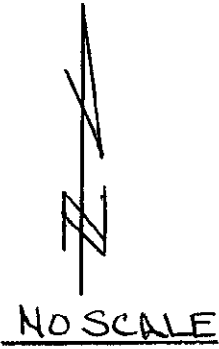
Received for record the
20TH day of AUGUST
A. D. 19 98 at 1:15 o'clock
P. m., and recorded in
Liber 7 of CORNERS

page 42
Ramona Collins, Deputy
Register of Deeds

T46N
R47W

T46N
1/4 COR.
R46W

SKETCH



13
18

S00°-07'-48" E
2644.84

M-7 13 18 A-7
24 19

RANGE LINE

S00°-31'-33" W
2634.24

M-8 24 19 A-8

S00°-04'-36" W
2641.09

24 19 ← CALC'D
25 30 POSITION

SURVEY &
REMONUMENTATION

SEP 08 1998

SECTION