

MAR 02 2000

SECTION

LAND CORNER RECORDATION CERTIFICATE
Filing Requirement of Act 74, Mich. P.A. 1970

Register's Office }
Gogebic County } ss.

For corners in

Gogebic Located In: Corner Code #
(County)

1. Public Land Survey T 45N R 46W E-1
T R
T R
T 46N R 46W E-13
S T R
S T R
S T R
S T R

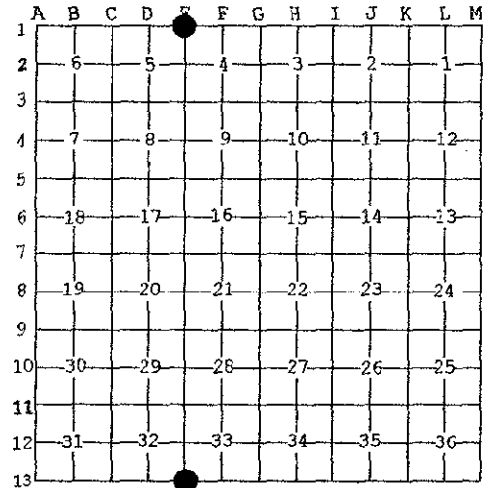
Received for record the
21ST day of JULY
A. D. 1999 at 1:05 o'clock
P m., and recorded in
Liber 7 of CORNERS
on page 174
Ramona Collins DePinto
Register of Deeds

Register of Deeds Stamp & File Number

4. Lot No. _____, Recorded Plat _____
5. Private Claims _____

Section Corner 4, 5, 32 & 33; T.45-46 N., R.46 W.

I, Richard L. Drahn, in a field survey on July 14, 1999 do hereby state that under requirements of P.A. 74, Michigan P.A. of 1970, the corner points mentioned in lines 1 and 2 above were in conformance with regulations and rules therefore as required in the current manual of survey instructions of the United States Department of the Interior, Bureau of Land Management or by a decree of a Court of Law and /or that the corner points mentioned in lines 3, 4 and 5 above were in conformance with the rules of the Michigan Board of Land Surveyors or by a Decree of a Court of Law; established, re-established, monumented, recovered, found as expressed below:



NOTE: Not more than 2 corners, all in the same town and range, may be recorded on this certificate.

A. Description of original monument and accessories and/or subsequent restoration:

Original corner established by John Burt on 8/31/1847. Original bearing trees:
Y. Birch 6" N.02° E. 3.00 chains (198.00')
B. Ash 10" N.30° W. 3.12 chains (205.92')
W. Pine stub 24" S.79° E. 1.98 chains (130.68')
Aspen 3" S.37° W. 0.66 chains (43.66')

B. Description of corner evidence found and/or method applied in restoring or reestablishing corner:

Corner position found marked by a 1" X 4 1/2' drill rod and an old 4" X 4" X 4' Cedar post set by surveyors unknown.

The position of the corner agrees well with the original distances to recovered quarter corners 1/2 mile west and 1 1/2 miles east, and to the recovered C.C. of sections 4 & 5, 30.50 chains south.

No evidence remains of the original bearing trees.

Due to the close conformity to the original notes and the long local usage, I have determined that this point best represents the corner as set by John Burt on 8/31/1847

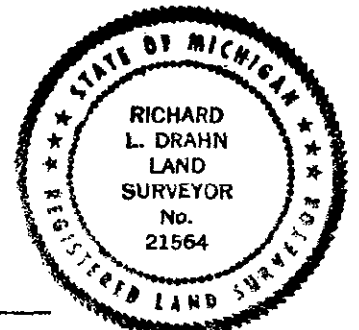
Corner research on file with Gogebic County records.

C. Description of monument for corner and accessories established to perpetuate locating the position of the corner:

At the corner position I set a 2" x 30" aluminum pipe monument with a 3 1/4" stamped aluminum cap and the following new B.T.s (all measurements taken to a nail in side of tree)

Yellow Birch 8" N.83° W. 18.27'
Sugar Maple 9" S.16° E. 25.13'
Red Maple 10" N.48° E. 26.32'
Steel sign rail 6' N.14° E. 1.88'

PEER GROUP APPROVED
Richard L. Drahn 7/20/99
COUNTY REGISTER



Signed by Richard L. Drahn Date July 15, 1999

Surveyor's Michigan License No. 21564
USFS A-9

FORM APPROVED BY MICHIGAN STATE BOARD OF PROFESSIONAL SURVEYORS, JAN. 28, 1971
REVISED MAY 14, 1975
REVISED JAN., 1983
REVISED OCT., 1986