

MAR 02 2000

SECTION

LAND CORNER RECORDATION CERTIFICATE
Filing Requirement of Act 74, Mich. P.A. 1970

Register's Office }
Gogebic County } ss.

For corners in

Table with columns: Code #, Gogebic (County), Located In: (Town/Range/Section), Corner. Includes entries for Public Land Survey, Property Controlling in Section, and Miscellaneous Property in Sec.

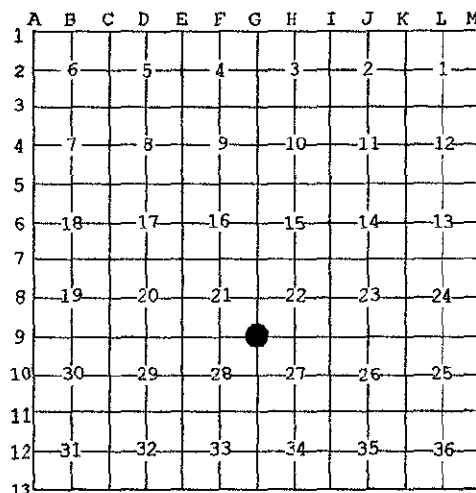
Received for record the 10th day of NOVEMBER A. D. 1999 at 11:25 o'clock A. m., and recorded in Liber 7 of CORNERS on page 266 Pamona Collins Deputy Register of Deeds

Register of Deeds Stamp & File Number

4. Lot No. , Recorded Plat
5. Private Claims

Section Corner 21, 22, 27 & 28; T.46 N., R.46 W.

I, Richard L. Drahn, in a field survey on November 5, 1999 do hereby state that under requirements of P.A. 74, Michigan P.A. of 1970, the corner points mentioned in lines 1 and 2 above were in conformance with regulations and rules therefore as required in the current manual of survey instructions of the United States Department of the Interior, Bureau of Land Management or by a decree of a Court of Law and /or that the corner points mentioned in lines 3, 4 and 5 above were in conformance with the rules of the Michigan Board of Land Surveyors or by a Decree of a Court of Law; established, re-established, monumented, recovered, found as expressed below:



NOTE: Not more than 2 corners, all in the same town and range, may be recorded on this certificate.

A. Description of original monument and accessories and/or subsequent restoration:

Original corner established by Austin Burt on 7/10/1851. Original bearing trees:
Sugar 12" N.13° E. 66 links (43.56')
Y. Birch 16' S.17° W. 6 links (3.96')

L. Chauletois on 6/6/35 recovered a 22" scribed Sugar Maple B.T.. He placed a location poster on the west side of the B.T.

B. Description of corner evidence found and/or method applied in restoring or reestablishing corner:

I restored the corner position at record bearing and distance from the remains of the two original bearing trees. The first is now a 24-28" decayed Sugar Maple stump.(cut). The second one is now a series of root holes with decayed Yellow Birch roots. The 1.33 chain distance south to "Stream 4 lks., West" checks to within 4 feet. The 1935 location poster was removed when the original B.T. was cut.

A 2 1/2" X 3' Iron pipe and two cedar posts bears N.16° E. 22.8' from the original corner position.
Corner research on file with Gogebic County Records.

C. Description of monument for corner and accessories established to perpetuate locating the position of the corner:

At the corner position I set a 2" x 30" aluminum pipe monument with a 3 1/4" stamped aluminum cap and the following new B.T.s (all measurements taken to a nail in side of tree)

Table with 4 columns: Tree Type, Diameter, Bearing, Distance. Includes entries for Sugar Maple (8", 5", 14") and Steel sign rail (6").

PEER GROUP APPROVED
Richard L. Drahn 11/9/99
COUNTY REPRESENTATIVE



Signed by Richard L. Drahn Date November 7, 1999

Surveyor's Michigan License No. 21564
USFS R-13

FORM APPROVED BY MICHIGAN STATE BOARD OF PROFESSIONAL SURVEYORS, JAN. 28, 1971

REVISED MAY 14, 1976
REVISED JAN., 1983
REVISED OCT., 1985