

LAND CORNER RECORDATION CERTIFICATE
Filing Requirement of Act 74, Mich. P.A. 1970

For corners in
Gogebic
 (County)

Located in: _____ Corner Code # _____

- | | | | | | | |
|---------------------------------------|---|------------|---|------------|-------------|-------|
| 1. Public Land Survey S-35 | T | <u>47N</u> | R | <u>47W</u> | <u>J-13</u> | |
| | T | _____ | R | _____ | _____ | |
| | T | <u>46N</u> | R | <u>47W</u> | <u>J-1</u> | |
| | T | _____ | R | _____ | _____ | |
| 2. Property Controlling in Section | S | _____ | T | _____ | R | _____ |
| | S | _____ | T | _____ | R | _____ |
| 3. Miscellaneous Property in Sec. | S | _____ | T | _____ | R | _____ |
| | S | _____ | T | _____ | R | _____ |
| 4. Lot No. _____, Recorded Plat _____ | | | | | | |
| 5. Private Claims _____ | | | | | | |

Register's Office }
 Gogebic County } ss.

Received for record the
16 day of SEPT
 A. D. 1994 at 4:10 o'clock
9 m., and recorded in
 Liber 5 of CORNERS
 on page 139
Ramona Collins, Deputy
 Register of Deeds

Register of Deeds Stamp & File Number

One-quarter corner common to Sections 35 & 2

I, John R. Garske, in a field survey on July, 19 94, do hereby certify that under requirements of P.A. 74, Michigan P.A. of 1970, the corner points mentioned in lines 1 and 2 above were in conformance with regulations and rules therefore as required in the current manual of survey instructions of the United States Department of the Interior, Bureau of Land Management or by a decree of a Court of Law and/or that the corner points mentioned in lines 3, 4 and 5 above were in conformance with the rules of the Michigan Board of Land Surveyors or by a Decree of a Court of Law; established, re-established, monumented, re-monumented, recovered, found as expressed below:

NOTE: Not more than 4 corners, all in the same town and range, may be recorded on this certificate.

A	B	C	D	E	F	G	H	I	J	K	L	M
2	6	5	4	3	2	1						
3												
4	7	8	9	10	11	12						
5												
6	18	17	16	15	14	13						
7												
8	19	20	21	22	23	24						
9												
10	30	29	28	27	26	25						
11												
12	31	32	33	34	35	36						
13												

A. Description of original monument and accessories and/or subsequent restoration:

Original survey by William A. Burt, D.S., in 1847. Sugar 4" is one-quarter corner. Original bearing trees: Hemlock 26" - N64°W, 25 links.

The one-quarter corner position was set by John R. Garske, RLS 28410, in February 1983 using existing occupation lines and consists of a P.K. nail in the road intersection. The corner is recorded in liber 2 of land corners P. 300. Accessories: top of hydrant - N47°E, 57.82'; P. pole - N33°W, 44.62'.

B. Description of corner evidence found and/or method applied in restoring or reestablishing corner:

I found a P.K. nail marking the corner position which checks with witnesses on my previous recordation certificate and updated the corner as noted below to bring it up to county and state specifications.

Act 74 research on file with County Register of Deeds Office.

PEER GROUP

Approved

Richard P. Drahn

9/14/94

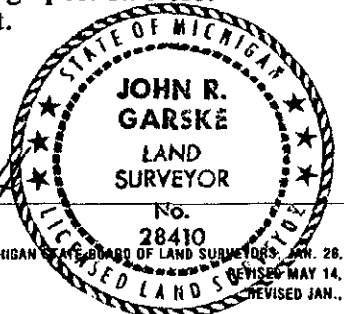
C. Description of monument for corner and accessories established to perpetuate locating the position of the corner:

Using the existing P.K. nail at the one-quarter corner location, I established the following reference objects: Two reference monuments consisting of a 2 1/2" x 30" aluminum pipe with a 3 1/4" aluminum cap stamped to indicate the corner position as follows: R.M. #1-S08°E, 34.20 feet - with steel sign post 1.94 feet away; R.M. #2-S64°W, 64.65 feet - with steel sign post 1.93 feet away; existing top of hydrant - N47°E, 57.82 feet; P. pole - N52°W, 44.65 feet.

SEE SKETCH ON BACK

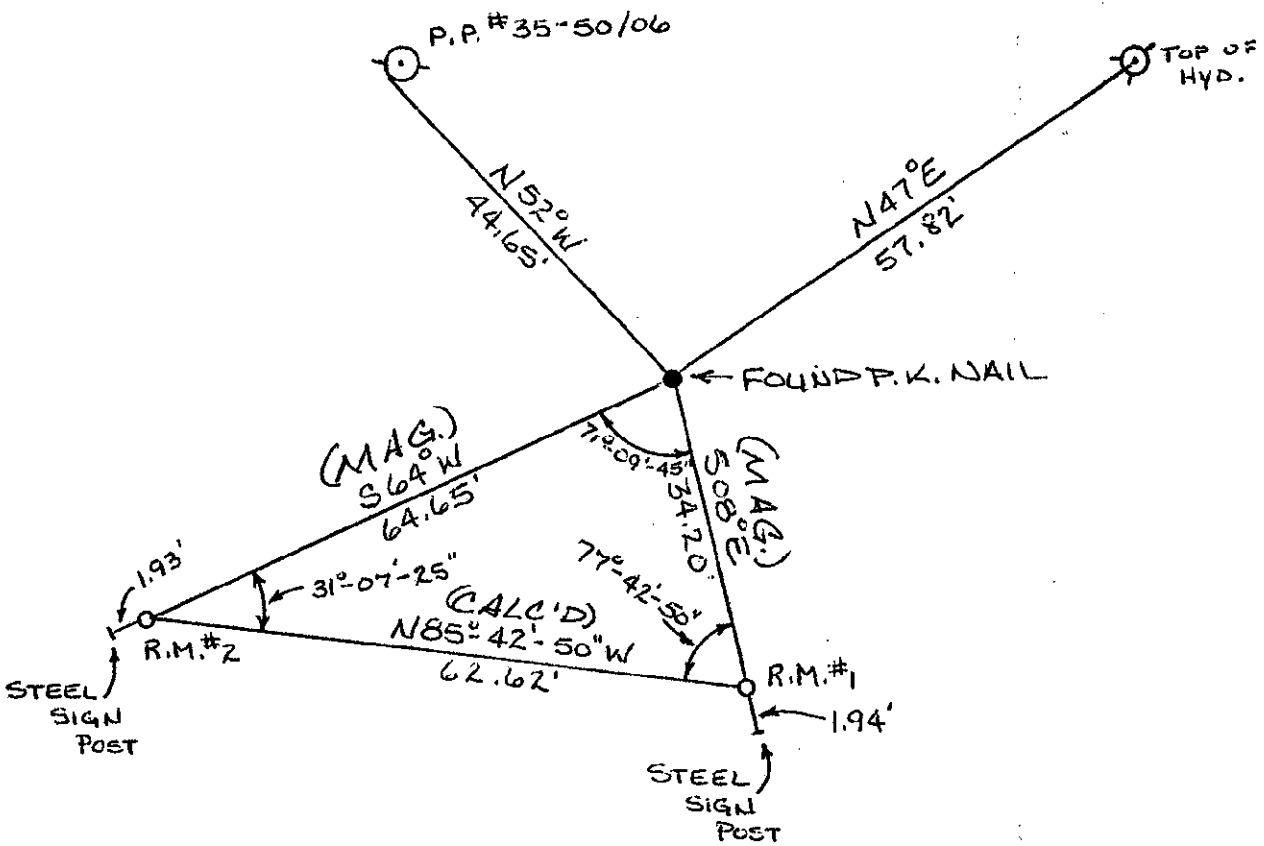
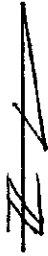
Signed by John R. Garske
 Surveyor's Michigan License No. 28410

Date 8/29/94



FORM APPROVED BY MICHIGAN STATE BOARD OF LAND SURVEYORS, JAN. 26, 1971
 REVISED MAY 14, 1975
 REVISED JAN., 1983

SKETCH
NO SCALE



47-47 - J-13