

SURVEY & REMONUMENTATION

OCT 03 1996

COMMISSION

LAND CORNER RECORDATION CERTIFICATE
Filing Requirement of Act 74, Mich. P.A. 1970

Register's Office }
Gogebic County } ss.

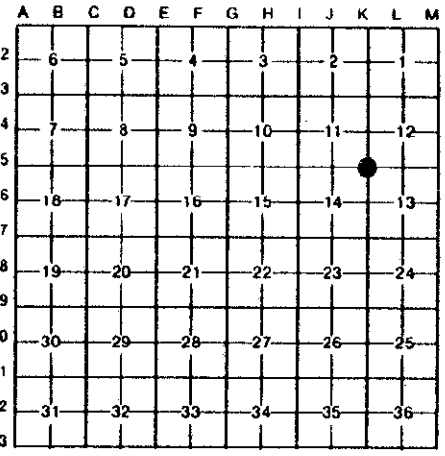
Received for record the
10TH day of JUNE
A. D. 1996 at 9:40 o'clock
A m., and recorded in
Liber 5 of CORNERS
on page 351
Ramona Collins Deputy
Register of Deeds

Register of Deeds Stamp & File Number

For corners in

| | | |
|---|-----------------------------|----------------|
| <u>Gogebic</u> <small>(County)</small> | Located In: | Corner Code #: |
| 1. Public Land Survey | T <u>46</u> N R <u>47</u> W | <u>K-5</u> |
| | T _____ R _____ | _____ |
| | T _____ R _____ | _____ |
| | T _____ R _____ | _____ |
| 2. Property Controlling in Section | S _____ T _____ R _____ | _____ |
| | S _____ T _____ R _____ | _____ |
| 3. Miscellaneous Property in Sec. | S _____ T _____ R _____ | _____ |
| | S _____ T _____ R _____ | _____ |

4. Lot No. _____, Recorded Plat _____
5. Private Claims _____
Sec. cor. comm. to sec's 11,12,13 & 14



I, John P. Goss, in a field survey on May 28, 19 96, do hereby certify that under requirements of P.A. 74, Michigan P.A. of 1970, the corner points mentioned in lines 1 and 2 above were in conformance with regulations and rules therefor as required in the current manual of survey instructions of the United States Department of the Interior, Bureau of Land Management or by a decree of a Court of Law and/or that the corner points mentioned in lines 3, 4 and 5 above were in conformance with the rules of the Michigan Board of Land Surveyors or by a Decree of a Court of Law; established, re-established, monumented, re-monumented, recovered, found as expressed below:

NOTE: Not more than 4 corners, all in the same town and range, may be recorded on this certificate.

A. Description of original monument and accessories and/or subsequent restoration:

Original corner established by William Ives in Sept. 1848. Set Post.
Original bearing trees: Sugar 10" N 53° E 35 links
Sugar 10" S 76° W 37 links

Matt Koivisto in 1975 restored Section corner by using fence line corner and Forestry tag. He set a 1½" iron pipe. M. Koivisto recorded said corner in Liber 1 on page 99 of Land Corners for Gogebic County. He established the following reference objects: 11" maple- N 85° E-9.4'; 7" Maple- N 25° E-17.3'; 7" Maple- N 70° W-13.5'.

B. Description of corner evidence found and/or method applied in restoring or reestablishing corner:

I found the 1½" iron pipe in Matt Koivisto certification and it checked with his witnesses. I updated the corner monument and accessories as noted below to state and county specification.

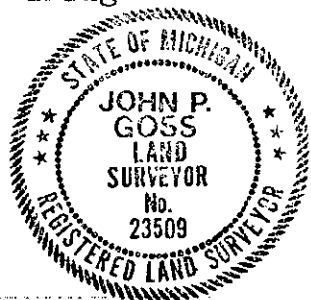
Act 74 reseach on file.

PEER GROUP APPROVED
Richard P. Drahn 6/6/96
COUNTY REPRESENTATIVE

C. Description of monument for corner and accessories established to perpetuate locating the position of the corner:

I replaced the 1½" iron pipe with a 2½" by 30" aluminum pipe with a 3¼" aluminum cap stamped: County Remonumentation; S-11, S-12, S-13, S-14, T.46 N, R.47 W., 1996; P.S. 23509. I established the following bearing trees and reference objects.

| | | | |
|----------------|---------|--------|----------|
| 11" Maple | N 85° E | 9.44' | (dead) |
| 8" Maple | N 60° W | 13.51' | |
| 8" Maple | S 59° E | 29.84' | |
| 8" Maple | N 20° E | 26.36' | |
| 6' Rail & Sign | S 70° W | 2.39' | |



Signed by John P. Goss Date May 29, 1996
Surveyor's Michigan License No. 23509