

JAN 05 2001

SECTION

LAND CORNER RECORDATION CERTIFICATE
Filing Requirement of Act 74, Mich. P.A. 1970

Register's Office }
 Gogebic County }

For corners in
Gogebic
 (County)

Located in: Corner Code #

1. Public Land Survey T46NR47W L-7
 T R
 T R
 T R

2. Property Controlling S T R
 in Section S T R

3. Miscellaneous S T R
 Property in Sec. S T R

4. Lot No. , Recorded Plat

5. Private Claims

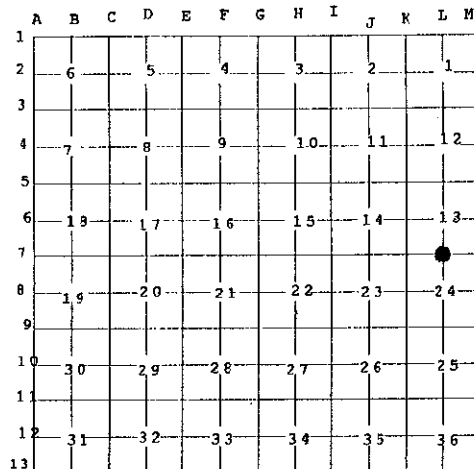
Quarter Corner common to Sections 13 and 24.

Received for record the
2ND day of JUNE
 A. D. 2000 at 10:20 o'clock
A M., and recorded in
 Liber 7 of CORNERS
 page 353
Cheryl Ruppe, Dep.
 Register of Deeds

Register of Deeds Stamp & File Number

I, John R. Garske, in a field survey on March 13, 2000, do hereby state that under requirements of P.A. 74, Michigan P.A. of 1970, the corner points mentioned in lines 1 and 2 above were in conformance with regulations and rules therefore as required in the current manual of survey instructions of the United States Department of the Interior, Bureau of Land Management or by a decree of a Court of Law and / or that the corner points mentioned in lines 3, 4, and 5 above were in conformance with the rules of the Michigan Board of Land Surveyors or by a Decree of a Court of Law; established, re-established, monumented, recovered, found as expressed below.

NOTE: Not more than 2 corners, all in the same town and range, may be recorded on this certificate.



A. Description of original monument and accessories and / or subsequent restoration:

Original survey by William Ives in 1848.
 Original Corner: Wood post set at 40 chains.
 Original Bearing Trees: 10" Fir N 52° W 14 Links
 8" Yellow Birch S 45° E 45 Links

B. Description of corner evidence found and / or method applied in restoring or re-establishing corner:

No corner evidence found.

I set a 30" stamped aluminum Bernsten monument at the intersection of a fenceline extended from the West and the centerline of Maki Road extended. (See sketch on back)

Record research on file.

BEER GROUP APPROVED
Richard P. Drabin 5/24/00
 COUNTY BOARD OF PROFESSIONAL SURVEYORS

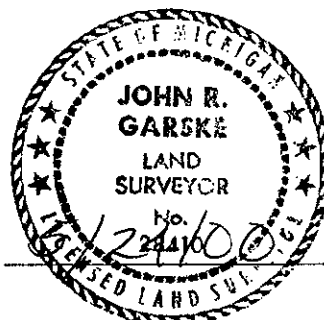
C. Description of monument for corner and accessories established to perpetuate locating the position of the corner:

I accepted the aluminum monument as monumenting the quarter corner common to Sections 13 & 24, from which I established the following witnesses:

14" Aspen	N 01° E	54.24 Feet
18" Aspen	S 53° W	67.72 Feet
10" Balsam	S 30° E	39.41 Feet
30" Twin Red Maple	N 70° E	56.83 Feet
Sign Post	S 85° E	0.96 Feet

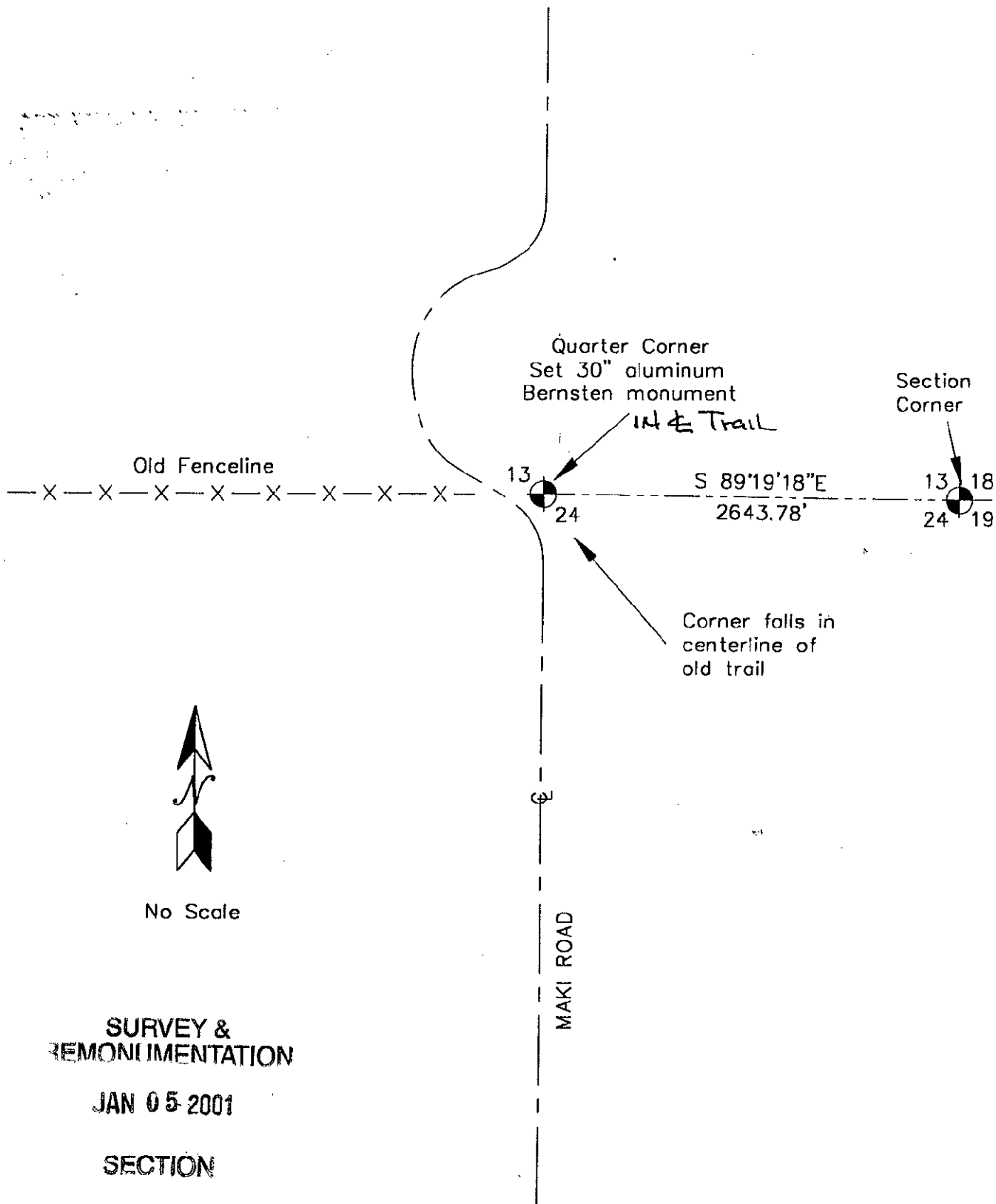
Signed by *John R. Garske*

Date 5/24/00



Surveyor's Michigan License No. 28410
 FB # 213, page 122 Federal Index N-23

T 46 N, R 47 W,
Quarter Corner Common to
Sections 13 and 24



SURVEY &
REMONIMENTATION

JAN 05 2001

SECTION