

SURVEY & REMONUMENTATION

SEP 08 1998

LAND CORNER RECORDATION CERTIFICATE
Filing Requirement of Act 74, Mich. P.A. 1970

For corners in

Register's Office } ss.
Gogebic County

Received for record the
20TH day of AUGUST
A. D. 1998 at 1:15 o'clock
P m., and recorded in
Liber 7 of CORNERS

page 43
Ramona Collins Deputy
Register of Deeds

Gogebic SECTION
(County)
ERWIN TOWNSHIP
1. Public Land Survey
Located In: T 46 N R 47 W Corner Code # M-08
T 46 N R 46 W A-DB
T ___ R ___
T ___ R ___
2. Property Controlling S ___ T ___ R ___
in Section S ___ T ___ R ___
3. Miscellaneous S ___ T ___ R ___
Property in Sec. S ___ T ___ R ___

4. Lot No. _____, Recorded Plat _____

5. Private Claims _____

1/4 CORNER TO SECTIONS 12 AND 24; T 46 N, R 47 W, R 46 W RESPECTIVELY

I, JOHN R. GARSKE, in a field survey on JUNE 17, 19 98 do hereby state that under requirements of P.A. 74, Michigan P.A. of 1970, the corner points mentioned in lines 1 and 2 above were in conformance with regulations and rules therefore as required in the current manual of survey Instructions of the United States Department of the Interior, Bureau of Land Management or by a decree of a Court of Law and /or that the corner points mentioned in lines 3, 4 and 5 above were in conformance with the rules of the Michigan Board of Land Surveyors or by a Decree of a Court of Law; established, re-established, monumented, recovered, found as expressed below:

NOTE: Not more than 2 corners, all in the same town and range, may be recorded on this certificate

A	B	C	D	E	F	G	H	I	J	K	L	M
1												
2	6		5		4		3		2		1	
3												
4	7		8		9		10		11		12	
5												
6	18		17		16		15		14		13	
7												
8	19		20		21		22		23		24	
9												
10	30		29		28		27		26		25	
11												
12	31		32		33		34		35		36	
13												

A. Description of original monument and accessories and/or subsequent restoration:

ORIGINAL CORNER ESTABLISHED BY WILLIAM A. BURT - SEPT., 1847

ORIGINAL CORNER: WOOD POST

ORIGINAL BEARING TREES:

YELLOW BIRCH 12" N 62° W 19 LINKS (12.54 feet)

YELLOW BIRCH 8" S 42° E 26 LINKS (17.16 feet)

PEER GROUP APPROVAL
Richard P. Drake 8/19/98
CHAIRMAN

B. Description of corner evidence found and/or method applied in restoring or reestablishing corner:

NO ORIGINAL EVIDENCE WAS FOUND.

CENTERLINE OF MAKI ROAD (EAST), CENTERLINE OF SOUTH DAVIS ROAD, AND THE CENTERLINE OF SIIRILA ROAD (WEST) WERE THE ONLY NOTICABLE EVIDENCE AS TO THE LOCATION OF THE CORNER. ALL THE AVAILABLE EVIDENCE POINTED TO THIS AS THE PROPER CORNER LOCATION OF THIS GOV'T CORNER.

RECORD RESEARCH ON FILE (see SKETCH ON BACK)

C. Description of monument for corner and accessories established to perpetuate locating the position of the corner:

AT THE CORNER LOCATION I SET A 10" X 5/8" IRON ROD WITH A STAMPED BRASS CAP, FROM WHICH I

ESTABLISHED THE FOLLOWING NEW

BLAZED AND SCRIBED BEARING TREES/ WITNESSES:
(all measurements taken to nail set in tree)

REF. MON. W/CAP	2 1/2"	S 39° E	42.26 feet
SPRUCE	5"	N 40° W	67.12 feet
SPRUCE	6"	S 32° W	94.54 feet
POWER POLE		N 46° E	47.31 feet



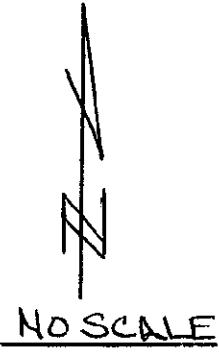
Signed by John R. Garske
Surveyor's Michigan License No. P.S. 28410

Date 8-17-98

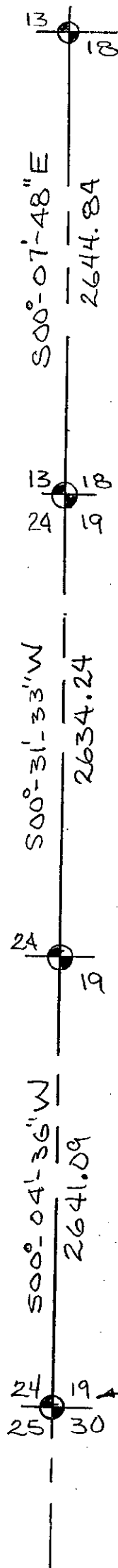
T46N
R47W

T46N
1/4 COR.
R46W

SKETCH



RANGE LINE



M-8

A-8

SURVEY &
REMONUMENTATION

SEP 08 1998

SECTION

← CALC'D
POSITION