

SURVEY & REMONUMENTATION

DEC 15 1998

SECTION

LAND CORNER RECORDATION CERTIFICATE
Filing Requirement of Act 74, Mich. P.A. 1970

For corners in

GOGEBIC Located In: _____ Corner Code # _____
(County)

1. Public Land Survey T R
SECTION 25 46N R 47W M-10
46N R 46W A-10
T R _____
2. Property Controlling S T R _____
in Section S T R _____
3. Miscellaneous S T R _____
Property in Sec. S T R _____

Register's Office } ss.
Gogebic County }

Received for record the
30TH day of OCTOBER
A. D. 1998 at 9:05 o'clock
9 m., and recorded in
Liber 7 of CORNERS
on page 69
Ramona Collins, Deputy
Register of Deeds

Register of Deeds Stamp & File Number

4. Lot No. _____, Recorded Plat _____
5. Private Claims _____

1/4 CORNER, SECTIONS 25 & 30, T46N, R46-47W

I, JOHN R GARSKE, in a field survey on OCT. 21, 1998 do hereby state that under requirements of P.A. 74, Michigan P.A. of 1970, the corner points mentioned in lines 1 and 2 above were in conformance with regulations and rules therefore as required in the current manual of survey instructions of the United States Department of the Interior, Bureau of Land Management or by a decree of a Court of Law and /or that the corner points mentioned in lines 3, 4 and 5 above were in conformance with the rules of the Michigan Board of Land Surveyors or by a Decree of a Court of Law; established, re-established, monumented, recovered, found as expressed below:

NOTE: Not more than 2 corners, all in the same town and range, may be recorded on this certificate.

	A	B	C	D	E	F	G	H	I	J	K	L	M
1													
2	6		5		4		3		2		1		
3													
4	7		8		9		10		11		12		
5													
6	18		17		16		15		14		13		
7													
8	19		20		21		22		23		24		
9													
10	30		29		28		27		26		25		
11													
12	31		32		33		34		35		36		
13													

A. Description of original monument and accessories and/or subsequent restoration:

ORIGINAL SURVEY BY WILLIAM BURT, D.S. 1847.
ORIGINAL CORNER: Y. BIRCH POST
ORIGINAL BEARING TREES:
Y. BIRCH 18" S75°W 29 LINKS
SUGAR 12" S78°E 30 LINKS

B. Description of corner evidence found and/or method applied in restoring or reestablishing corner:

I FOUND NO EVIDENCE OF THE CORNER POSITION WHICH FALLS IN THE CENTERLINE OF SOUTH DAVIS ROAD. I ESTABLISHED THE CORNER BY SINGLE PROPORTIONAL MEASUREMENT ON THE RANGE LINE BETWEEN KNOWN CORNER POSITIONS IN ACCORDANCE WITH THE ORIGINAL GOVERNMENT NOTES. THE SKETCH ON THE BACK SHOWS CORNERS SET AND DISTANCES USED IN PROPORTIONING.

(RESEARCH ON FILE)

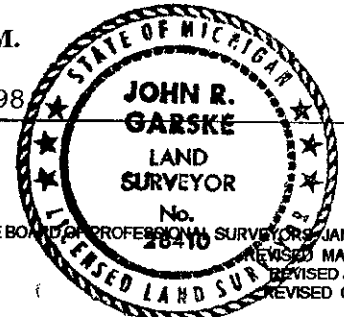
~~DEED GROUP APPROVED~~
Richard R. Drab 10/27/98
~~COURT RECORDED~~

C. Description of monument for corner and accessories established to perpetuate locating the position of the corner:

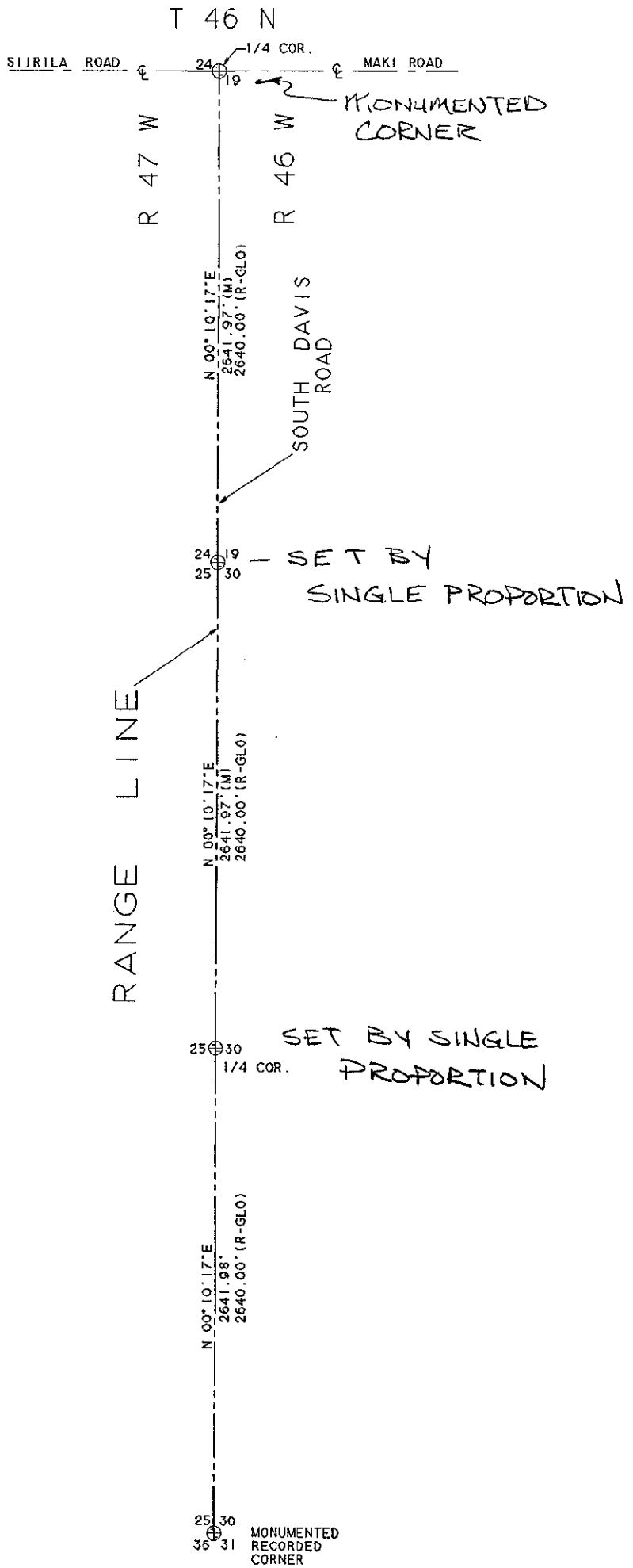
I SET A 3 1/4" DIA. BRASS CAP ON A 5/8" X 12" IRON ROD, STAMPED TO IDENTIFY THE CORNER, FROM WHICH I ESTABLISHED:
P. POLE N39°W 43.28 FEET
6" SPRUCE N76°E 39.93 FEET
P. POLE S15°E 87.17 FEET
REFERENCE MONUMENT - 2 1/2" X 30" ALUMINUM PIPE MONUMENT WITH A 3 1/4" DIA. STAMPED ALUMINUM CAP WEST 26.00 FEET
STEEL SIGN RAIL WEST 1.40 FEET FROM R.M.

Signed by John R Garske
Surveyor's Michigan License No. 28410

Date 10-26-98



FORM APPROVED BY MICHIGAN STATE BOARD OF PROFESSIONAL SURVEYORS, JAN. 28, 1971
REVISED MAY 14, 1975
REVISED JAN., 1983
REVISED OCT., 1995



SURVEY &
REMONUMENTATION

DEC. 15 1998

SECTION

