

NOV 12 1997

COMMISSION

LAND CORNER RECORDATION CERTIFICATE
Filing Requirement of Act 74, Mich. P.A. 1970

Register's Office }
Gogebic County } ss.

For corners in

Gogebic
(County)

Located In: Corner Code #

- 1. Public Land Survey T 47N R 44W C-1
- T _____ R _____
- T _____ R _____
- T 48N R 44W C-13
- 2. Property Controlling S _____ T _____ R _____
- in Section S _____ T _____ R _____
- 3. Miscellaneous S _____ T _____ R _____
- Property in Sec. S _____ T _____ R _____

Received for record the
12th day of August
A. D. 1997 at 11:00 o'clock
A m., and recorded in
Liber 6 of CORNAS
on page 181

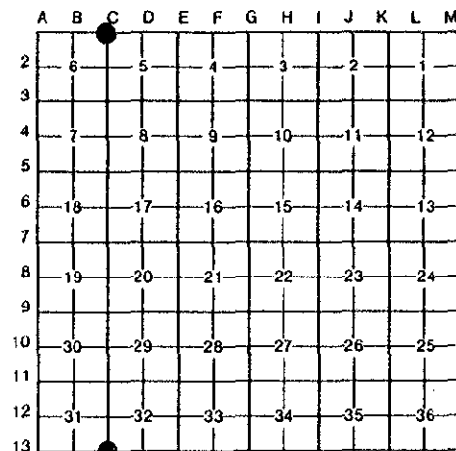
Ramona Collins Deputy
Register of Deeds

Register of Deeds Stamp & File Number

- 4. Lot No. _____, Recorded Plat _____
- 5. Private Claims _____

Sec. Cor. 5, 6, 31 & 32; T.47-48 N., R.44 W.

I, Richard L. Drahn in a field survey on August 5, 19 97, do hereby certify that under requirements of P.A. 74, Michigan P.A. of 1970, the corner points mentioned in lines 1 and 2 above were in conformance with regulations and rules therefore as required in the current manual of survey instructions of the United States Department of the Interior, Bureau of Land Management or by a decree of a Court of Law and/or that the corner points mentioned in lines 3, 4 and 5 above were in conformance with the rules of the Michigan Board of Land Surveyors or by a Decree of a Court of Law; established, re-established, monumented, re-monumented, recovered, found as expressed below:



NOTE: Not more than 4 corners, all in the same town and range, may be recorded on this certificate.

A. Description of original monument and accessories and/or subsequent restoration:

Corner established by Austin Burt on August 11, 1847. Original B.T.s --- Y. Birch 18" N.15 E. 6 lks. --- Sugar 10" N.36 W. 21 lks. --- Y. Birch 36" S.25 E. 35 lks. --- Cedar 10" S.60 W. 67 lks. ---

Corner restored on 8/9/68 by D. Lappala (12585) from the stump holes of the first two B.T.s; the decayed stump of the third B.T. and the scribed remains of the cedar B.T. He set a 2" X 60" iron pipe with a 3" stamped brass cap and the following new B.T.s: --- 5" (6") Cedar N.31 E. (N.32 E.) 28.1' (28.14') --- 7" (9") Sugar Maple S.35 E. (S.33 E.) 27.2' (27.24') ---

B. Description of corner evidence found and/or method applied in restoring or reestablishing corner:

13" (15") Hemlock S.35 W. (S.37 W.) 16.2' (15.94') ---

Corner recorded in USFS Liber, Page Z-5 on March 31, 1969.

Recovered the corner as described and the bearing objects as indicated in parentheses above. Stump holes remain from the first two original B.T.s; a stump hole with Y. Birch bark remains from the third and no evidence remains of the Cedar recovered scribed in 1968.

Research form on file with Gogebic County records.

C. Description of monument for corner and accessories established to perpetuate locating the position of the corner:

From the above described monument I established the following new B.O.s:

- Old cedar sign post S.43 W. 2.51'
- 6' Steel sign rail N.35 W. 1.76'

PEER GROUP APPROVED
Richard L. Drahn 8/13/97
COUNTY REPRESENTATIVE



Signed by Richard L. Drahn

Date August 8, 1997

Surveyor's Michigan License No. 21564

USFS A-5
Z-5