

NOV 12 1997

COMMISSION

LAND CORNER RECORDATION CERTIFICATE
Filing Requirement of Act 74, Mich. P.A. 1970

Register's Office } ss.
Gogebic County }

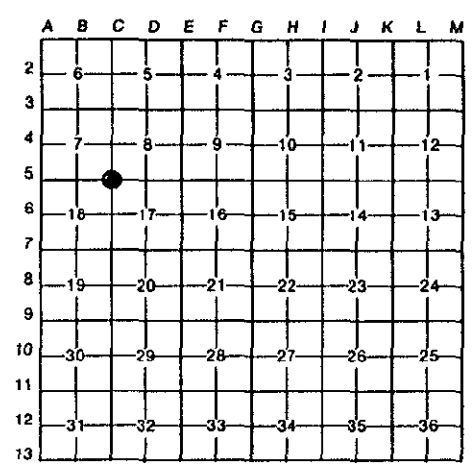
Received for record the
18th day of SEPTEMBER
A. D. 1997 at 10:45 o'clock
A. m., and recorded in
Liber 6 of CORNERS
on page 197.
Tamara Collins, Deputy
Register of Deeds

For corners in Gogebic (County) Located In: Corner Code #
1. Public Land Survey T 47N R 44W C-5
2. Property Controlling in Section S T R
3. Miscellaneous Property in Sec. S T R
4. Lot No. , Recorded Plat
5. Private Claims

Register of Deeds Stamp & File Number

Section corner 7, 8, 17 & 18; T.47 N., R.44 W.

Richard L. Drahn, in a field survey on September 14, 1997, do hereby certify that under requirements of P.A. 74, Michigan P.A. of 1970, the corner points mentioned in lines 1 and 2 above were in conformance with regulations and rules therefore as required in the current manual of survey instructions of the United States Department of the Interior, Bureau of Land Management or by a decree of a Court of Law and/or that the corner points mentioned in lines 3, 4 and 5 above were in conformance with the rules of the Michigan Board of Land Surveyors or by a Decree of a Court of Law; established, re-established, monumented, re-monumented, recovered, found as expressed below:



NOTE: Not more than 4 corners, all in the same town and range, may be recorded on this certificate.

A. Description of original monument and accessories and/or subsequent restoration:

Corner established by William Burt in 1848. Original B.T.s --- Sugar 14" S.20 W. 20 links (13.20') --- Sugar 12" N.20 E. 40 links (26.40') ---

Corner restored on 7/2/86 by Richard L. Drahn (21564) from the stump remains of the two original B.T.s. He set a 2 1/2" X 36" iron pipe with a 3" stamped brass cap and the following new B.T.s: --- 8" (10") Sugar Maple N.34 E. (N.32 E.) 36.18' (36.14') --- 9" (11") Sugar Maple on north edge of rock outcrop S.50 E. (S.51 E.) 36.75' (36.72') --- 8" (10") Sugar Maple S.41W. (S.42 W.) 14.91' (14.95') --- 6' Steel sign rail

B. Description of corner evidence found and/or method applied in restoring or reestablishing corner:

S.80 E. (S.81 E.) 2.6' (2.54') ---

Corner recorded in Gogebic County in Liber 3, Page 24 on 3/4/87.

Recovered the corner as described and the bearing trees as indicated in parentheses above. Both original B.T.s are now decayed Sugar Maple stumps.

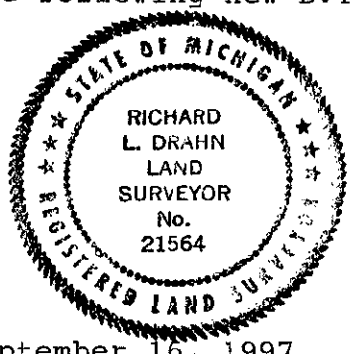
Research form on file with Gogebic County records.

C. Description of monument for corner and accessories established to perpetuate locating the position of the corner:

From the above described monument I established the following new B.T.:

8" Sugar Maple N.77 E. 28.10'

PEER GROUP APPROVED
Richard L. Drahn 9/17/97
COUNTY REPRESENTATIVE



Signed by Richard L. Drahn Date September 16, 1997

Surveyor's Michigan License No. 21564