

NOV 12 1997

COMMISSION

LAND CORNER RECORDATION CERTIFICATE  
Filing Requirement of Act 74, Mich. P.A. 1970

Register's Office }  
Gogebic County } ss.

For corners in

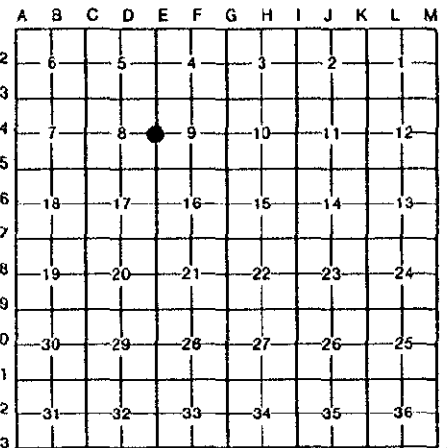
Gogebic (County) Located In: Corner Code #

1. Public Land Survey	T <u>47N</u> R <u>44W</u>	<u>E-4</u>
	T _____ R _____	_____
	T _____ R _____	_____
	T _____ R _____	_____
2. Property Controlling in Section	S _____ T _____ R _____	_____
	S _____ T _____ R _____	_____
3. Miscellaneous Property in Sec.	S _____ T _____ R _____	_____
	S _____ T _____ R _____	_____
4. Lot No. _____, Recorded Plat _____		
5. Private Claims _____		

Received for record the  
18<sup>TH</sup> day of AUGUST  
A. D. 19 97 at 11:00 o'clock  
A m., and recorded in  
Liber 6 of CORNERS  
on page 188  
Ramona Collins Deputy  
Register of Deeds  
Register of Deeds Stamp & File Number

1/4 Corner 8&9; T.47 N., R.44 W.

I, Richard L. Drahn in a field survey on August 11, 19 97, do hereby certify that under requirements of P.A. 74, Michigan P.A. of 1970, the corner points mentioned in lines 1 and 2 above were in conformance with regulations and rules therefore as required in the current manual of survey instructions of the United States Department of the Interior, Bureau of Land Management or by a decree of a Court of Law and/or that the corner points mentioned in lines 3, 4 and 5 above were in conformance with the rules of the Michigan Board of Land Surveyors or by a Decree of a Court of Law; established, re-established, monumented, re-monumented, recovered, found as expressed below:



NOTE: Not more than 4 corners, all in the same town and range, may be recorded on this certificate.

A. Description of original monument and accessories and/or subsequent restoration:

Corner established by William Burt in 1848. Original B.T.s --- Sugar 9" n.42 W. 8 links (5.28'). --- Y. Birch 6" S.38 E. 27 links (17.82').---

Corner position re-established by R.L. Drahn (21564) on 7/21/86 by single proportionate methods between recovered section corners north and south. He set a 2" X 36" iron pipe with a 3" stamped brass cap and the following new B.T.s: --- 11" (12") White Ash N.29 E. (N.32 E.) 12.60' (12.59')--- 11" (12") Yellow Birch S.20 E. (S.23 E.) 10.96' (10.96') --- 6" (7") Sugar Maple N.82 E. (N.86 E.) 8.02' (8.00') --- 6' Metal sign post S.57 W. (S.56 W.) 2.2' (1.19') ---

B. Description of corner evidence found and/or method applied in restoring or reestablishing corner:

Corner recorded in Gogebic County in Liber 3, Page 31 on 3/4/87.

Research form on file with Gogebic County records.

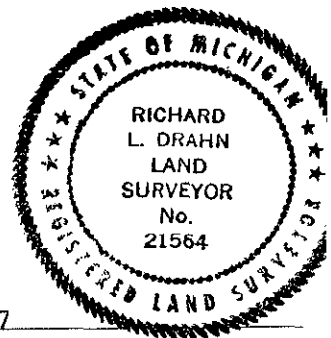
Recovered the monument as described and the bearing trees as noted in parentheses above. No evidence was found of the original B.T.s

C. Description of monument for corner and accessories established to perpetuate locating the position of the corner:

From the above described monument I established the following new B.T.:

8" Sugar Maple S.83 W. 20.18'

BEER GROUP APPROVED  
Richard L. Drahn 8/13/97  
COUNTY REPRESENTATIVE



Signed by Richard L. Drahn Date August 11, 1997

Surveyor's Michigan License No. 21564

USFS G-9