

SURVEY & REMONUMENTATION

NOV 12 1997

COMMISSION

LAND CORNER RECORDATION CERTIFICATE
Filing Requirement of Act 74, Mich. P.A. 1970

Register's Office }
Gogebic County } ss.

Received for record the
18TH day of SEPTEMBER
A. D. 1997 at 10:45 o'clock
A M., and recorded in
Liber 6 of CORNERS
CG, page 204
Ramona Collins, Deputy
Register of Deeds

Register of Deeds Stamp & File Number

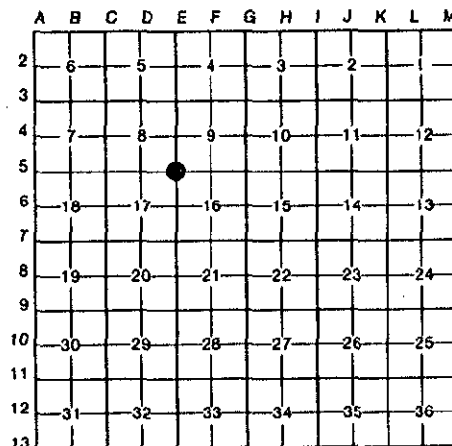
For corners in

Gogebic (County)	Located In:	Corner Code #
1. Public Land Survey	T <u>47N</u> R <u>44W</u>	<u>E-5</u>
	T _____ R _____	_____
	T _____ R _____	_____
	T _____ R _____	_____
2. Property Controlling in Section	S _____ T _____ R _____	_____
	S _____ T _____ R _____	_____
3. Miscellaneous Property in Sec.	S _____ T _____ R _____	_____
	S _____ T _____ R _____	_____

4. Lot No. _____, Recorded Plat _____
5. Private Claims _____

Section Corner 8, 9, 16 & 17; T.47 N., R.44 W,

Richard L. Drahn, in a field survey on September 12, 19 97, do hereby certify that under requirements of P.A. 74, Michigan P.A. of 1970, the corner points mentioned in lines 1 and 2 above were in conformance with regulations and rules therefore as required in the current manual of survey instructions of the United States Department of the Interior, Bureau of Land Management or by a decree of a Court of Law and/or that the corner points mentioned in lines 3, 4 and 5 above were in conformance with the rules of the Michigan Board of Land Surveyors or by a Decree of a Court of Law; established, re-established, monumented, re-monumented, recovered, found as expressed below:



NOTE: Not more than 4 corners, all in the same town and range, may be recorded on this certificate.

A. Description of original monument and accessories and/or subsequent restoration:

Corner established by William Burt, in 1848. Original B.T.s --- Hemlock 20" S.15 E. 5 links (3.30') --- Y. Birch 10" N.60 W. 27 links (17.82') ---

Corner restored on 7/25/83 by Richard L. Drahn (21564) from the remains of the two original B.T.s and from a line tree and natural feature south. He set a 2" X 30" aluminum monument with a 3 1/2" stamped aluminum cap and the following new B.T.s: --- 10" (11") Basswood N.07 E. (N.04 E.) 17.30' (17.10') --- 13" (17") Sugar Maple S.48 E.(S.49 E.) 25.92' (25.75") --- 7" (9") Sugar Maple S.72 W. (S.71 W.) 30.88' (30.73') --- 6' steel sign rail N.45 E.

B. Description of corner evidence found and/or method applied in restoring or reestablishing corner:

(N.42 E.) 3.04' (3.00') ---

Corner recorded in Gogebic County in Liber 2, Page 573 on 2/15/84.

Recovered the corner as described and the bearing objects as indicated in parentheses above. The original Hemlock B.T. is now a Hemlock stump decayed to ground line and the Y. Birch is now a windthrown stump hole.

Research form on file with Gogebic County records.

C. Description of monument for corner and accessories established to perpetuate locating the position of the corner:

From the above described monument I established the following new B.T.:

7" Sugar Maple S.19 W. 38.58'

PEER GROUP APPROVED

Richard L. Drahn 9/17/97
COUNTY REPRESENTATIVE



Signed by Richard L. Drahn

Date September 15, 1997

Surveyor's Michigan License No. 21564