

NOV 12 1997

COMMISSION

LAND CORNER RECORDATION CERTIFICATE
Filing Requirement of Act 74, Mich. P.A. 1970

Register's Office } ss.
Gogebic County }

Received for record the
18th day of SEPTEMBER
A. D. 1997 at 10:50 o'clock
A m., and recorded in
Liber 6 of CORNERS
on page 211
Ramona Collins, Deputy
Register of Deeds

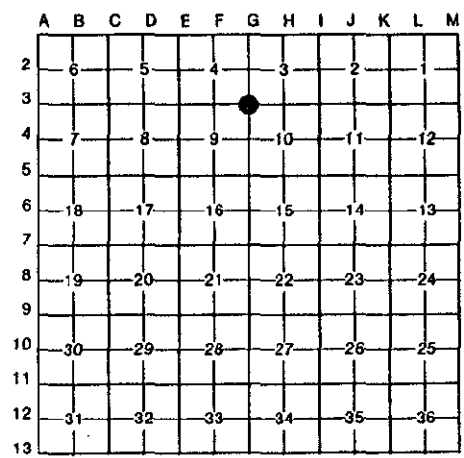
Register of Deeds Stamp & File Number

For corners in

Table with columns: Gogebic (County), Located In, Corner Code #. Rows include Public Land Survey, Property Controlling in Section, Miscellaneous Property in Sec., Lot No., and Private Claims.

Section Corner 3, 4, 9 & 10: T.47 N., R.44 W.

Richard L. Drahn in a field survey on September 10, 1997 do hereby certify that under requirements of P.A. 74, Michigan P.A. of 1970, the corner points mentioned in lines 1 and 2 above were in conformance with regulations and rules therefore as required in the current manual of survey instructions of the United States Department of the Interior, Bureau of Land Management or by a decree of a Court of Law and/or that the corner points mentioned in lines 3, 4 and 5 above were in conformance with the rules of the Michigan Board of Land Surveyors or by a Decree of a Court of Law; established, re-established, monumented, re-monumented, recovered, found as expressed below:



NOTE: Not more than 4 corners, all in the same town and range, may be recorded on this certificate.

A. Description of original monument and accessories and/or subsequent restoration:

Corner established by William Burt in 1848. Original B.T.s --- Cedar 12" N.25 W. 17 links (11.22') --- Cedar 10" S.45 E. 28 links (18.48') ---
Corner restored on 5/27/75 by Richard L. Drahn (21564) from the remains of the two B.T.s, an original scribed witness tree and from natural features north, east and west. He set a 2" X 60" iron pipe with a 3" stamped brass cap and the following new B.T.s: --- 10" (11") Cedar N.53 W. (N.54 W.) 25.8' (25.87') --- 7" (11") Cedar N.64 E. (N.63 E.) 14.7' (14.82') --- 6" (9") Cedar S.60 W. (S.59 W.) 3.2' (3.19') --- 7' steel rail S.84 E. 1.8' (1.60')

B. Description of corner evidence found and/or method applied in restoring or reestablishing corner:

Corner recorded in Gogebic County in Liber 1, Page 161 on 1/27/76.
Recovered the corner as described and the bearing objects as indicated in parentheses above. A decayed cedar windfall still remains from the first B.T. No evidence remains of the second B.T. The original witness tree recovered in 1975 is still scribed.

Research form on file with Gogebic County records.

C. Description of monument for corner and accessories established to perpetuate locating the position of the corner:

From the above described monument I established the following new B.T.:
6" Cedar S.38 E. 21.17'

PEER GROUP APPROVED
Richard L. Drahn 9/17/97
COUNTY REPRESENTATIVE



Signed by Richard L. Drahn Date September 15, 1997

Surveyor's Michigan License No. 21564