

NOV 12 1997

COMMISSION

LAND CORNER RECORDATION CERTIFICATE
Filing Requirement of Act 74, Mich. P.A. 1970

For corners in

Form with fields for County (Gogebic), Located In (T 47N R 44W), Corner Code (# G-5), and categories: 1. Public Land Survey, 2. Property Controlling in Section, 3. Miscellaneous Property in Sec.

Register's Office
Gogebic County ss.

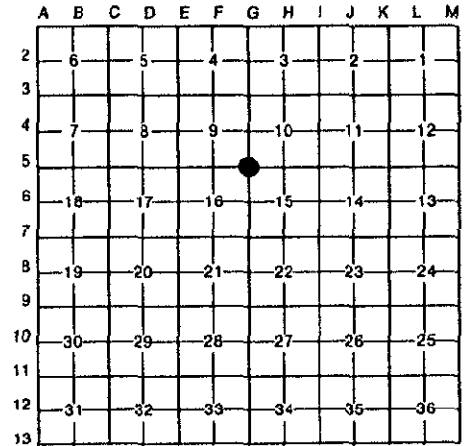
Received for record the
18th day of SEPTEMBER
A. D. 1997 at 10:50 o'clock
A m., and recorded in
Liber 6 of CORNERS
page 213
Ramona Collins, Deputy
Register of Deeds

Register of Deeds Stamp & File Number

- 4. Lot No. , Recorded Plat
5. Private Claims

Section Corner 9, 10, 15 & 16; T.47 N., R.44 W.

Richard L. Drahn in a field survey on September 12, 1997 do hereby certify that under requirements of P.A. 74, Michigan P.A. of 1970, the corner points mentioned in lines 1 and 2 above were in conformance with regulations and rules therefore as required in the current manual of survey instructions of the United States Department of the Interior, Bureau of Land Management or by a decree of a Court of Law and/or that the corner points mentioned in lines 3, 4 and 5 above were in conformance with the rules of the Michigan Board of Land Surveyors or by a Decree of a Court of Law; established, re-established, monumented, re-monumented, recovered, found as expressed below:



NOTE: Not more than 4 corners, all in the same town and range, may be recorded on this certificate.

A. Description of original monument and accessories and/or subsequent restoration:

Corner established by William Burt in 1848. Original B.T.s: --- Sugar 12" S.65 W. 18 links (11.88') --- Sugar 14" N.60 E. 30 links (19.80') ---

Corner restored on 11/7/69 by Donald D. Lappala (12585) from the remains of the two original B.T.s and natural features east. He set a 2" X 60" iron pipe with a 3" stamped brass cap and the following new B.T.s: --- 10" Sugar Maple (17") West (N.88 W.) 17.3' (17.07') --- 10" (14") Sugar Maple N.16 E. (N.15 E.) 19.4' (19.45') --- 8" (15") Sugar Maple N.57 E. (N.56 E.) 29.9' (29.89')

B. Description of corner evidence found and/or method applied in restoring or reestablishing corner:

Corner recorded in USFS Liber, Page J-13 on 5/27/70.

Recovered the corner as described and the bearing objects as indicated in parentheses above. A decayed Sugar Maple stump and a series of root holes is all that remains of the original B.T.s.

Research form on file with Gogebic County records.

C. Description of monument for corner and accessories established to perpetuate locating the position of the corner:

From the above described monument I established the following:

- 6" Steel sign rail S.60 E. 1.87'
4" X 4" Cedar sign post S.53 W. 1.80'

PEER GROUP APPROVED
Richard L. Drahn 9/17/97
COUNTY REPRESENTATIVE



Signed by Richard L. Drahn Date September 15, 1997

Surveyor's Michigan License No. 21564