

**SURVEY &
REMONUMENTATION**

SEP 08 1998

SECTION

**LAND CORNER RECORDATION CERTIFICATE
Filing Requirement of Act 74, Mich. P.A. 1970**

For corners in

<u>Gogebic</u> (County)	Located In:	Corner Code #
1. Public Land Survey	T <u>47N</u> R <u>44W</u>	<u>K-7</u>
	T ___ R ___	_____
	T ___ R ___	_____
	T ___ R ___	_____
2. Property Controlling in Section	S ___ T ___ R ___	_____
	S ___ T ___ R ___	_____
3. Miscellaneous Property in Sec.	S ___ T ___ R ___	_____
	S ___ T ___ R ___	_____

Register's Office }
Gogebic County } ss.

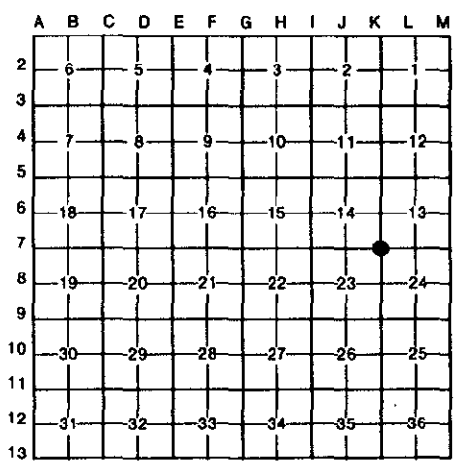
Received for record the
14th day of MAY
A. D. 1998 at 3:20 o'clock
P m., and recorded in
Liber 6 of CORNERS
on page 376
Ramona Collins, Deputy
Register of Deeds

Register of Deeds Stamp & File Number

4. Lot No. _____, Recorded Plat _____
5. Private Claims _____

Section Corner 13, 14, 23 & 24; T.47 N., R.44 W.

I, Richard L. Drahn a field surveyor on April 21, 1998, do hereby certify that under requirements of P.A. 74, Michigan P.A. of 1970, the corner points mentioned in lines 1 and 2 above were in conformance with regulations and rules therefore as required in the current manual of survey instructions of the United States Department of the Interior, Bureau of Land Management or by a decree of a Court of Law and/or that the corner points mentioned in lines 3, 4 and 5 above were in conformance with the rules of the Michigan Board of Land Surveyors or by a Decree of a Court of Law; established, re-established, monumented, re-monumented, recovered, found as expressed below:



NOTE: Not more than 4 corners, all in the same town and range, may be recorded on this certificate.

A. Description of original monument and accessories and/or subsequent restoration:

Corner established by William Burt in 1848. Original B.T.S --- 16" Lynn N.65 E. 32 links (21.12) --- 12" Sugar S.43 W. 30 links (19.80') --- ~~Corner~~ position re-established by John R. Garske (28410) on 5/21/92 by ~~single~~ proportionate methods. He set a 2 1/2" aluminum pipe with a 3" stamped aluminum cap and the following new bearing trees:

12"	Sugar Maple	N.61 E.	15.78'
12"	Sugar Maple	S.29 W.	14.45'
10"	Sugar Maple	N.59 W.	38.88'
6'	Steel sign rail	North	2.00'

B. Description of corner evidence found and/or method applied in restoring or reestablishing corner:

Corner recorded in Gogebic County Liber 4, Page 86 on 6/16/92.
Corner research on file with Gogebic County records.
Recovered the monument as described and the bearing trees as follows:

15"	Sugar Maple	N.62 E.	15.82'
15"	Sugar Maple	S.28 W.	14.43'
12"	Sugar Maple	N.59 W.	38.90'
6'	Steel sign rail	N.07 W.	1.98'

No evidence remains of the original bearing trees.

C. Description of monument for corner and accessories established to perpetuate locating the position of the corner:

New bearing tree established:

8"	Sugar Maple	N.12 W.	48.24'
----	-------------	---------	--------

PEER GROUP APPROVED
Richard L. Drahn 5/13/98
COUNTY _____



Signed by Richard L. Drahn Date April 22, 1998

Surveyor's Michigan License No. 21564