

SEP 08 1998

SECTION

LAND CORNER RECORDATION CERTIFICATE
Filing Requirement of Act 74, Mich. P.A. 1970

Register's Office
Gogebic County ss.

For corners in

Gogebic
(County)

Located In: Corner Code #

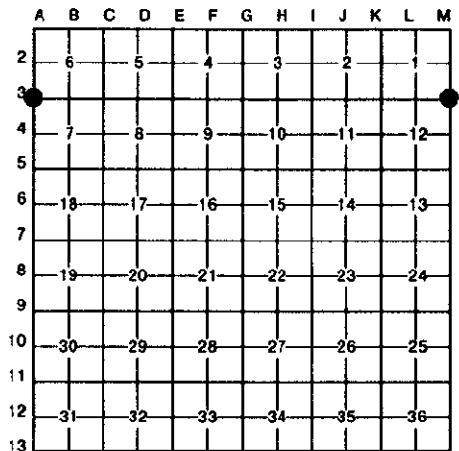
- 1. Public Land Survey T 47N R 44W M-3
2. Property Controlling in Section S T R
3. Miscellaneous Property in Sec. S T R

Received for record the
14th day of MAY
A. D. 1998 at 3:30 o'clock
P m., and recorded in
Liber 6 of CORNERS
on page 383
Ramona Collins, Dep.
Register of Deeds
Register of Deeds Stamp & File Number

- 4. Lot No. , Recorded Plat
5. Private Claims

Section Corner 1, 6, 7 & 12; T.47 N., R.43-44 W.

I, Richard L. Drahn in a field survey on April 28, 1998, do hereby certify that under requirements of P.A. 74, Michigan P.A. of 1970, the corner points mentioned in lines 1 and 2 above were in conformance with regulations and rules therefore as required in the current manual of survey instructions of the United States Department of the Interior, Bureau of Land Management or by a decree of a Court of Law and/or that the corner points mentioned in lines 3, 4 and 5 above were in conformance with the rules of the Michigan Board of Land Surveyors or by a Decree of a Court of Law; established, re-established, monumented, re-monumented, recovered, found as expressed below:



NOTE: Not more than 4 corners, all in the same town and range, may be recorded on this certificate.

A. Description of original monument and accessories and/or subsequent restoration:
Corner established by Austin Burt on */10/1847. Original B.T.s --- Hemlock 24" S.46 W. 39 links (26.74') --- Hemlock 24" N.49 E. 37 links (24.42') --- Hemlock 20" N.15 E. 35 links (23.10') --- Hemlock 18" S.20 E. 70 links (46.20')
Corner position re-established by John R. Garske (28410) on 8/24/92 by single proportionate methods. He set a 2 1/2" X 30" aluminum pipe with a 3" stamped aluminum cap and the following new bearing trees.
7" Maple N.48 W. 44.15'
12" Basswood N.72 E. 42.53'
10" Basswood S.15 W. 10.46'
6' Steel sign rail N.12 W. 2.19'

B. Description of corner-evidence found and/or method applied in restoring or reestablishing corner:
Corner recorded in Gogebic County Liber 4, Page 101 on 9/9/92.
Corner research of fill with Gogebic County records.

Recovered the monument as described and the bearing trees as follows:
8" Sugar Maple N.50 W. 44.13'
15" Basswood N.71 E. 42.39'
13" Basswood S.13 W. 10.49'
6' Steel sign rail N.07 W. 2.19'

No evidence remains of the original B.T.s.

C. Description of monument for corner and accessories established to perpetuate locating the position of the corner:

New bearing tree referenced:

9" Sugar Maple S.73 W. 22.22'

PEER GROUP APPROVED
Richard L. Drahn 5/13/98
COUNTY REPRESENTATIVE



Signed by Richard L. Drahn Date May 3, 1998

Surveyor's Michigan License No. 21564