

**SURVEY &
REMONUMENTATION**

DEC 15 1998

SECTION

**LAND CORNER RECORDATION CERTIFICATE
Filing Requirement of Act 74, Mich. P.A. 1970**

For corners in

<u>Gogebic</u> <small>(County)</small>	Located In:	Corner Code #
1. Public Land Survey	T <u>46N</u> R <u>45W</u>	<u>J-1</u>
	T _____ R _____	_____
	T _____ R _____	_____
	T <u>47N</u> R <u>45W</u>	<u>J-13</u>
2. Property Controlling in Section	S _____ T _____ R _____	_____
	S _____ T _____ R _____	_____
3. Miscellaneous Property in Sec.	S _____ T _____ R _____	_____
	S _____ T _____ R _____	_____

Register's Office }
Gogebic County } ss.

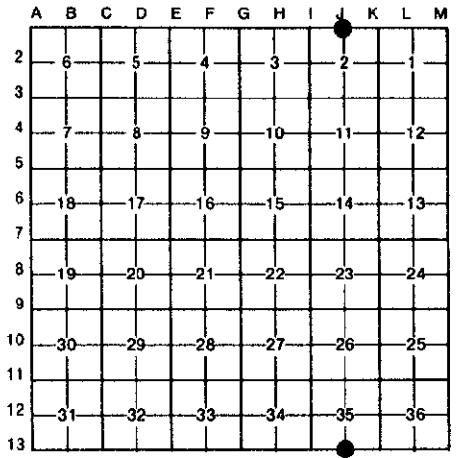
Received for record the
25th day of NOVEMBER
A. D. 1998 at 10:00 o'clock
A m., and recorded in
Liber 7 of CORNERS
page 90
Ramona Collins Deputy
Register of Deeds

Register of Deeds Stamp & File Number

4. Lot No. _____, Recorded Plat _____
5. Private Claims _____

$\frac{1}{4}$ Corner 2 & 35; T.46-47 N., R.45 W.

Richard L. Drahn, in a field survey on October 29, 19 98, do hereby certify that under requirements of P.A. 74, Michigan P.A. of 1970, the corner points mentioned in lines 1 and 2 above were in conformance with regulations and rules therefore as required in the current manual of survey instructions of the United States Department of the Interior, Bureau of Land Management or by a decree of a Court of Law and/or that the corner points mentioned in lines 3, 4 and 5 above were in conformance with the rules of the Michigan Board of Land Surveyors or by a Decree of a Court of Law; established, re-established, monumented, re-monumented, recovered, found as expressed below:



NOTE: Not more than 4 corners, all in the same town and range, may be recorded on this certificate.

A. Description of original monument and accessories and/or subsequent restoration:

Corner established by Austin Burt on 8/30/1847. Original B.T.s --- Maple 12" N.34 W. 29 links (19.14') --- Spruce 9" N.51 W. 22 links (14.52') ---

B. Description of corner evidence found and/or method applied in restoring or reestablishing corner:

Restored corner position at record bearing and distance from the remains of the two original B.T.s. The first one is a large windthrown stump hole. The second one is now a very large White Spruce stump, decayed to well below ground line.

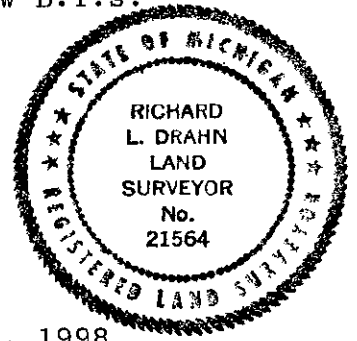
A 3/4" iron pipe with a 2 X 2" x 48" guard stake bears N.20 W. 3.05' from the original corner position.

Corner research on file with Gogebic County records.

C. Description of monument for corner and accessories established to perpetuate locating the position of the corner:

At the corner I set a 2 1/2" X 30" aluminum pipe with a 3 1/4" aluminum cap, stamped to indicate the corner position and the following new B.T.s:

10"	Hemlock	N.72 E.	48.44'
9"	Sugar Maple	S.71 W.	11.35'
5"	Sugar Maple	N.21 W.	45.73'
6'	Steel sign rail	N.12 E.	2.44'



DEED GROUP APPROVED
Richard L. Drahn 11/24/98
COUNTY _____

Signed by Richard L. Drahn Date November 9, 1998

Surveyor's Michigan License No. 21564