

# SURVEY & REMONUMENTATION

OCT 03 1996

## LAND CORNER RECORDATION CERTIFICATE Filing Requirement of Act 74, Mich. P.A. 1970

Register's Office  
Gogebic County

For corners in Gogebic COMMISSION

	Located in:	Corner Code #
1. Public Land Survey Section 28	T 47N R 46W	E-10
	T _____ R _____	_____
	T _____ R _____	_____
	T _____ R _____	_____
2. Property Controlling in Section	S _____ T _____ R _____	_____
	S _____ T _____ R _____	_____
3. Miscellaneous Property in Section	S _____ T _____ R _____	_____
	S _____ T _____ R _____	_____

Received for record the  
16<sup>TH</sup> day of AUGUST  
 A. D. 1996 at 11:10 o'clock  
A. M., and recorded in  
 Lib. 6 of CORNERS  
 on page 14  
Ramona Collins Deputy  
 Register of Deeds

Register of Deeds Stamp & File Number

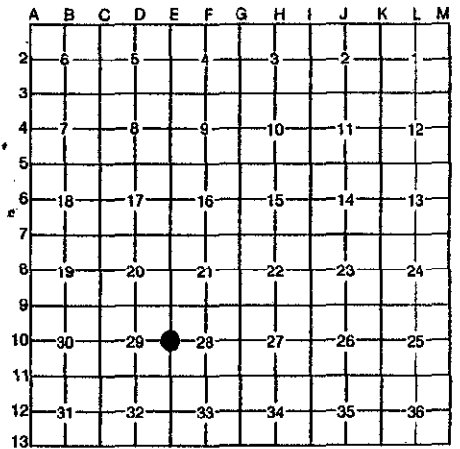
- 4. Lot No. \_\_\_\_\_, Recorded Plat \_\_\_\_\_
- 5. Private Claims \_\_\_\_\_

One-quarter section corner common to Sections 29 and 28, T47N, R46W.

John R. Garske July 18 1996

I, \_\_\_\_\_, in a field survey on \_\_\_\_\_, 19\_\_\_\_ do hereby certify that under requirements of P.A. 74, Michigan P.A. of 1970, the corner points mentioned in lines 1 and 2 above were in conformance with regulations and rules therefore as required in the current manual of survey instructions of the United States Department of the Interior, Bureau of Land Management or by a decree of a Court of Law and/or that the corner points mentioned in lines 3, 4 and 5 above were in conformance with the rules of the Michigan Board of Professional Surveyors or by a Decree of a Court of Law; established, re-established, monumented, re-monumented, recovered, found as expressed below:

NOTE: Not more than 4 corners, all in the same town and range, may be recorded on this certificate.



### A. Description of original monument and accessories and/or subsequent restoration:

- On June 16, 1851, Austin Burt, U.S. Deputy Surveyor, set a post with a yellow birch 14" bearing S42°W - 15 links (9.90') 8" fir - N59°E - 21 links (13.86')

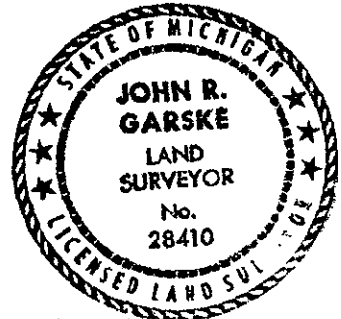
### B. Description of corner evidence found and/or method applied in restoring or reestablishing corner:

I reestablished the corner position at the centerline intersection of Blueberry lane and Aspen Lane. Measurements north and south to old fence lines at "40 Lines" check well with this location. Measurements north and south to monumented corners also helped to verify this position.

(See sketch on back.)

Record Reserch on file.

PEER GROUP APPROVED  
Richard R. Deakin 8/14/96  
 COUNTY REPRESENTATIVE



### C. Description of monument for corner and accessories established to perpetuate locating the position of the corner:

I set a 3 1/4" diameter aluminum cap atop a 3/4" x 21" rebar. The cap is stamped: County Remonumentation, T47N, R46W, S-29, S-28, 1996, 1/4, R.L.S. 28410, and set 0.30 feet below gravel road surface. The following bearing trees and/or reference objects:

- 14" tamarack - N65°W - 59.06 feet
- 4" sugar - N51°E - 45.25 feet
- 6" black ash - S43°E - 44.33 feet
- 6" sugar - N60°E - 38.60 feet (existing)

Set a 2 1/2" diameter x 30" long aluminum pipe with 3 1/4" aluminum cap stamped: County Remonumentation, T47N, R46W, R.M., 29, 28, 1/4, 1996, R.L.S. 28410, N48°E, 27.36' with a steel sign rail N62°W - 1.25 feet.

Signed by John R. Garske  
 Surveyor's Michigan License No. 28410

Date 8-4-96

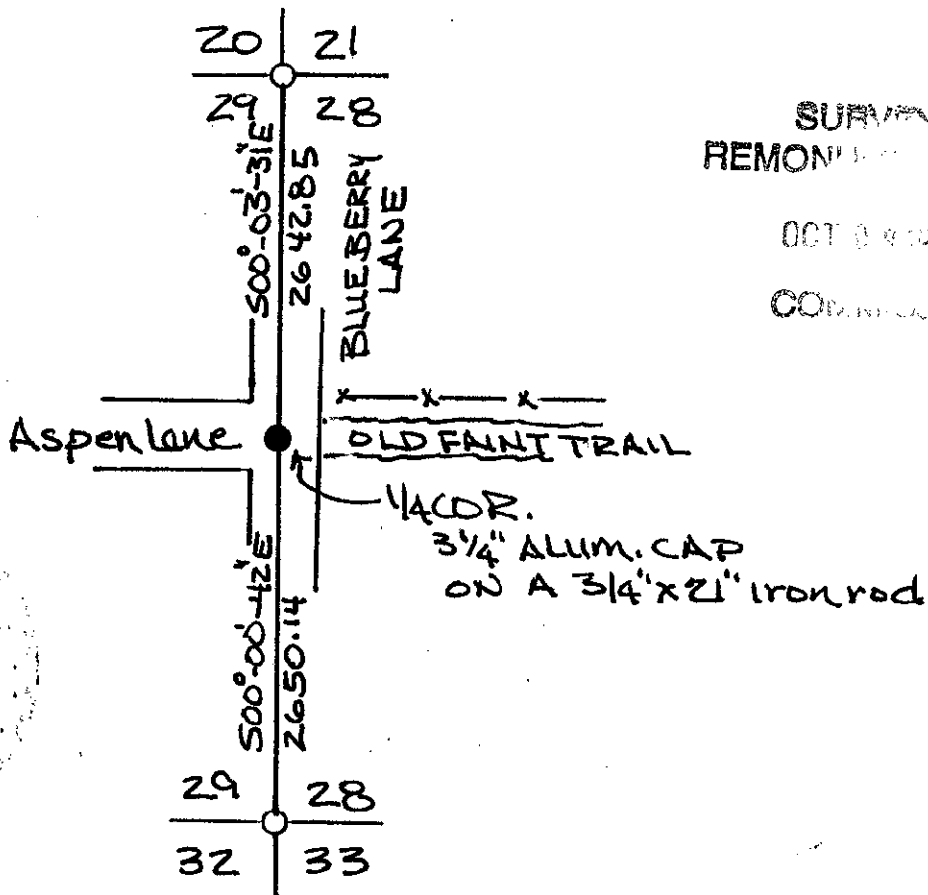
T. 47N., R. 46W.  
E-10

SKETCH



NOT TO SCALE

1/4 CORNER  
SECTIONS 28 & 29



SURVEY &  
REMON...

OCT 0 1988

CON...