

**SURVEY & REMONUMENTATION**

SEP 29 1994

**COMMISSION**

**LAND CORNER RECORDATION CERTIFICATE**  
Filing Requirement of Act 74, Mich. P.A. 1970

Register's Office } ss.  
Gogebic County }

For corners in  
Gogebic  
(County)

Located In: Corner Code #

- |                                    |                 |                 |       |
|------------------------------------|-----------------|-----------------|-------|
| 1. Public Land Survey              | Sec. 9          | T 47N R 46W     | F-5   |
|                                    |                 | T _____ R _____ | _____ |
|                                    |                 | T _____ R _____ | _____ |
|                                    |                 | T _____ R _____ | _____ |
| 2. Property Controlling in Section | S _____ T _____ | R _____         | _____ |
|                                    | S _____ T _____ | R _____         | _____ |
| 3. Miscellaneous Property in Sec.  | S _____ T _____ | R _____         | _____ |
|                                    | S _____ T _____ | R _____         | _____ |

Received for record the  
16<sup>TH</sup> day of SEPTEMBER  
A. D. 1994 at 3:20 o'clock  
1 m., and recorded in  
Liber 5 of CORNERS  
on page 97.  
Ramona Collins, Dep.  
Register of Deeds  
Register of Deeds Stamp & File Number

4. Lot No. \_\_\_\_\_, Recorded Plat \_\_\_\_\_  
5. Private Claims \_\_\_\_\_

**One-quarter corner Sections 9 & 16**

I, John R. Garske, in a field survey on September 12, 19 94, do hereby certify that under requirements of P.A. 74, Michigan P.A. of 1970, the corner points mentioned in lines 1 and 2 above were in conformance with regulations and rules therefore as required in the current manual of survey instructions of the United States Department of the Interior, Bureau of Land Management or by a decree of a Court of Law and/or that the corner points mentioned in lines 3, 4 and 5 above were in conformance with the rules of the Michigan Board of Land Surveyors or by a Decree of a Court of Law; established, re-established, monumented, re-monumented, recovered, found as expressed below:

**NOTE: Not more than 4 corners, all in the same town and range, may be recorded on this certificate.**

	A	B	C	D	E	F	G	H	I	J	K	L	M
2	6		5		4		3		2		1		
3													
4	7		8		9		10		11		12		
5													
6	18		17		16		15		14		13		
7													
8	19		20		21		22		23		24		
9													
10	30		29		28		27		26		25		
11													
12	31		32		33		34		35		36		
13													

A. Description of original monument and accessories and/or subsequent restoration:

Original survey by Austin Burt, D.S., in 1851. Set wood post. Original bearing trees: Spruce 7" - S07°E, 14 links; Fir 6" - N28°W, 24 links.

The corner position was set by Ewart C. Muller, RLS 15408, in June 1980 using single proportional measurement. He marked the corner with a 48" x 4" diameter concrete monument and recorded it in Liber 2 of land corners, P. 69. Accessories: Popular 2" - S74°W - 24.92'; P. pole - N58°W, 44.00'; S.W. corner concrete headwall - N40°E, 217.54'. The corner was reset by Jack Goss, RLS as a 5/8" capped rebar.

B. Description of corner evidence found and/or method applied in restoring or reestablishing corner:

I found Goss's 5/8" x 24" capped rebar at the corner position which checks with the witnesses on Muller's certificate. I updated the corner position and accessories as noted below to bring it up to county and state specifications.

Act 74 research on file with County Register of Deeds Office.

**PEER GROUP**

**Approved**

Richard P. Dreilm

9/14/94

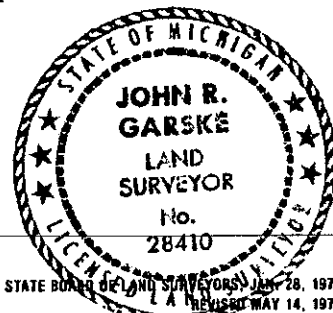
C. Description of monument for corner and accessories established to perpetuate locating the position of the corner:

I replaced the 5/8" rebar with a 3/4" x 30" rebar with a 3" aluminum cap stamped: 1/4, S-9, S-16, T47N, R46W, 1994, RLS 28410. I established the following bearing trees and reference objects: Reference monument consisting of a 2 1/2" x 30" aluminum pipe with a 3" aluminum cap stamped to indicate the corner position - N09°E, 94.45 feet with a steel sign post 0.31 feet away; hydrant - N82°E, 194.94 feet; oak 4" - S85°W, 69.49 feet; oak 5" - S24°E, 114.69 feet; capped rebar - S85°E, 150.67 feet.

SEE SKETCH ON BACK

Signed by John R. Garske  
Surveyor's Michigan License No. 28410

Date 9/14/94



SKETCH

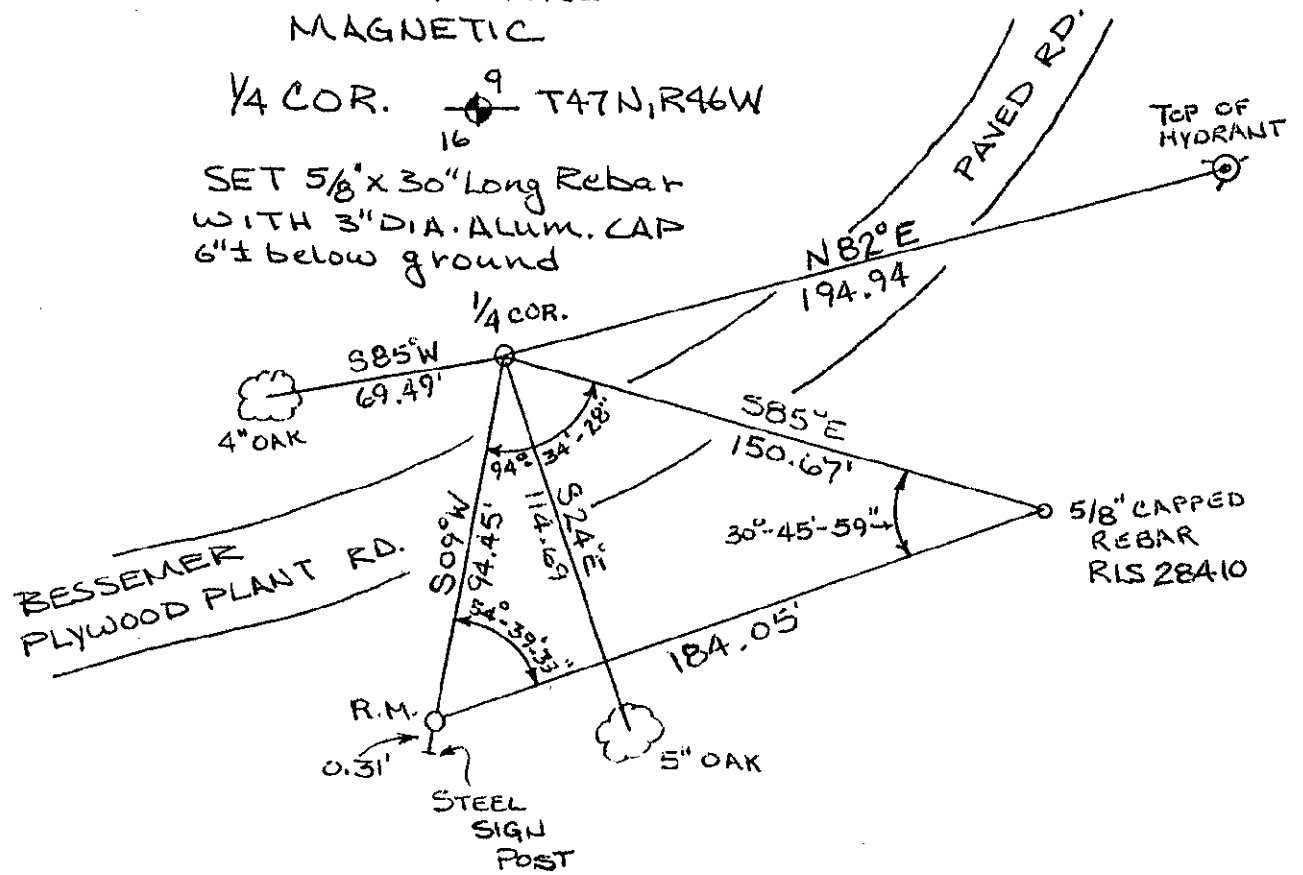


NO SCALE

BEARINGS ARE  
MAGNETIC

1/4 COR.  $\frac{9}{16}$  T47N, R46W

SET 5/8" x 30" Long Rebar  
WITH 3" DIA. ALUM. CAP  
6"  $\pm$  below ground



47-46 F-5