

**SURVEY & REMONUMENTATION**

OCT 0 9 1996

**COMMISSION**

**LAND CORNER RECORDATION CERTIFICATE**  
Filing Requirement of Act 74, Mich. P.A. 1970

Register's Office }  
Gogebic County } ss.

For corners in Gogebic (County)	Located In:	Corner Code #
1. Public Land Survey	T 47N R 46W	G-9
	T _____ R _____	_____
Section 21	T _____ R _____	_____
	T _____ R _____	_____
2. Property Controlling in Section	S _____ T _____ R _____	_____
	S _____ T _____ R _____	_____
3. Miscellaneous Property in Section	S _____ T _____ R _____	_____
	S _____ T _____ R _____	_____

Received for record the  
16<sup>th</sup> day of August  
A. D. 1996 at 11:10 o'clock  
P m., and recorded in  
Liber 6 of CORNERS  
on page 18  
Ramona Collins, Deputy  
Register of Deeds

Register of Deeds Stamp & File Number

4. Lot No. \_\_\_\_\_, Recorded Plat \_\_\_\_\_  
5. Private Claims \_\_\_\_\_  
Section corner to Sections 21, 22, 27, & 28, T47N, R46W.

	A	B	C	D	E	F	G	H	I	J	K	L	M
2	5	5	4	3	2	1							
3													
4	7	6	9	10	11	12							
5													
6	18	17	16	15	14	13							
7													
8	19	20	21	22	23	24							
9													
10	30	29	28	27	26	25							
11													
12	31	32	33	34	35	36							
13													

I, John R. Garske, in a field survey on June 25, 1996, do hereby certify that under requirements of P.A. 74, Michigan P.A. of 1970, the corner points mentioned in lines 1 and 2 above were in conformance with regulations and rules therefore as required in the current manual of survey instructions of the United States Department of the Interior, Bureau of Land Management or by a decree of a Court of Law and/or that the corner points mentioned in lines 3, 4 and 5 above were in conformance with the rules of the Michigan Board of Professional Surveyors or by a Decree of a Court of Law; established, re-established, monumented, re-monumented, recovered, found as expressed below:

**NOTE: Not more than 4 corners, all in the same town and range, may be recorded on this certificate.**

**A. Description of original monument and accessories and/or subsequent restoration:**

- Original survey by Austin Burt, D.S., in 1851. He set a wood post from which: 14" Hemlock - S5°W - 18 links and 16" Sugar - N51°E - 37 links.
- 1921 - Gogebic Co. Rd. Commission - old notes indicate a corner in place in 1921. USFS notes from 1935 indicate an iron pipe found at the corner location.

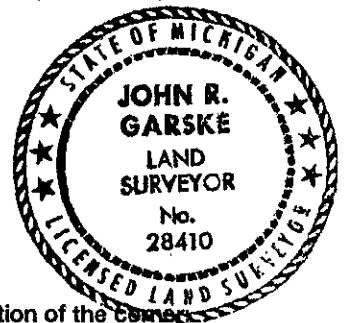
**B. Description of corner evidence found and/or method applied in restoring or reestablishing corner:**

I found an old P.K. nail in the pavement at the center line intersections of Johnson and Harding roads with a strong magnetic reading indicating an iron of some sort under the surface. Upon excavating 1 1/2 feet deep, nothing could be found, but a strong reading was still obtained. I established the corner position at the P.K. nail after verifying with measurements, North, South east, and west and comparing them to the Old Road Commission information

(See sketch on back)

Record research on file.

I updated the corner position to state and county specifications as noted below.



**C. Description of monument for corner and accessories established to perpetuate locating the position of the corner:**

I replaced the found P.K. nail with a 5/8"x 24" rebar capped with a 3 1/4" diameter brass cap stamped to read T47N, R46W; 21, 22, 27, & 28, 1996, RLS 28410 cemented into the pavement from which I established the following reference objects:  
Power pole-N40°W-47.54 feet  
Power Pole-S55°W-40.84 feet  
Reference monument consisting of a 2 1/2" diameter x 30" long aluminum pipe with a 3 1/4" diameter aluminum cap stamped: County Remonumentation: T47N, R46W, R.M., 21, 22, 27, & 28, 1996, RLS 28410, S41°E, 45.12 feet.  
Six foot steel rail with sign - S41°E - 46.85 feet.

PEER GROUP APPROVED  
Richard P. Dehn 8/14/96  
COUNTY REPRESENTATIVE

Signed by John R. Garske  
Surveyor's Michigan License No. 28410

Date 8-4-96

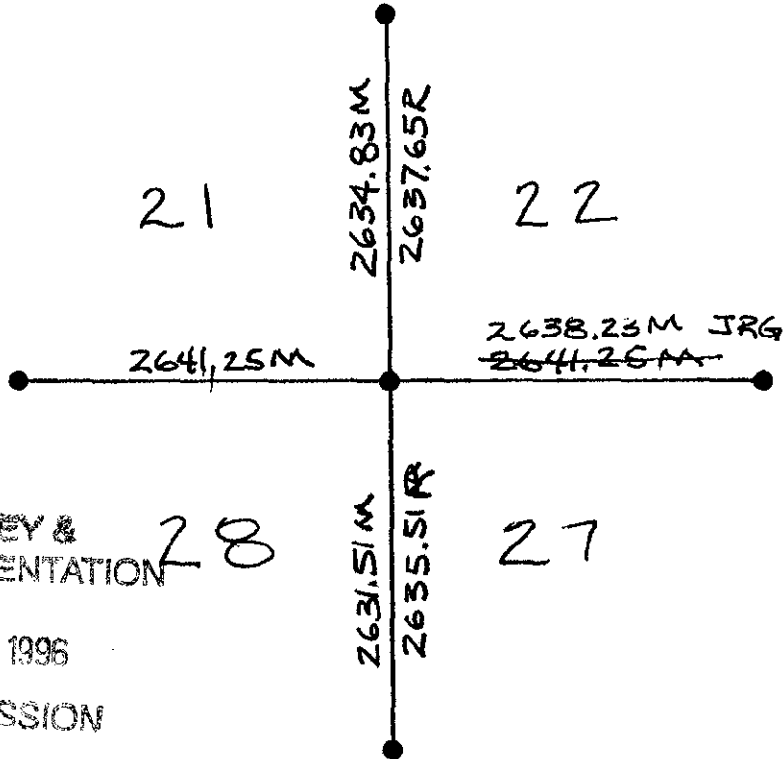
FORM APPROVED BY MICHIGAN STATE BOARD OF PROFESSIONAL SURVEYORS, JAN. 28, 1971  
REVISED MAY 14, 1975  
REVISED JAN., 1983

SKETCH:  
NOT TO SCALE

T. 47N., R. 46W.  
G-29



R - RECORDED  
M - MEASURED



SURVEY &  
REMONUMENTATION

OCT 03 1996

COMMISSION