

SURVEY & REMONUMENTATION

JAN 22 1998

SECTION

LAND CORNER RECORDATION CERTIFICATE
Filing Requirement of Act 74, Mich. P.A. 1970

Register's Office }
Gogebic County } ss.

For corners in

Gogebic (County)	Located In:	Corner Code #
1. Public Land Survey	Section 15 T <u>47N</u> R <u>46W</u>	<u>I-7</u>
	T _____ R _____	_____
	T _____ R _____	_____
	T _____ R _____	_____
2. Property Controlling in Section	S _____ T _____ R _____	_____
	S _____ T _____ R _____	_____
3. Miscellaneous Property in Sec.	S _____ T _____ R _____	_____
	S _____ T _____ R _____	_____

Received for record the
2nd day of DECEMBER
A. D. 1997 at 10:35 o'clock
A m., and recorded in
Liber 6 of CORNERS
on page 280
Ramona Collins, Deputy
Register of Deeds

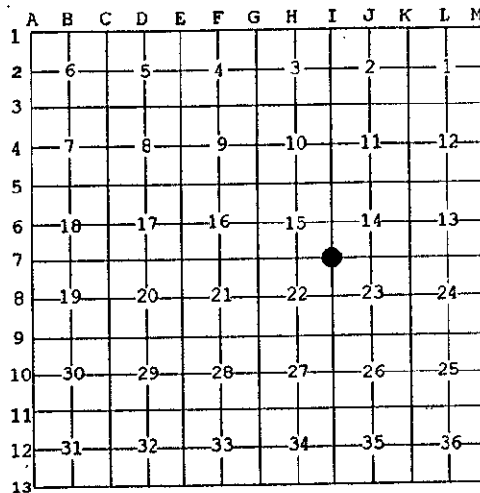
Register of Deeds Stamp & File Number

4. Lot No. _____, Recorded Plat _____
5. Private Claims _____

Section Corner to 14, 15, 22 & 23 T47N, R46W

I, John R. Garske, in a field survey on November 10, 1997 do hereby state that under requirements of P.A. 74, Michigan P.A. of 1970, the corner points mentioned in lines 1 and 2 above were in conformance with regulations and rules therefore as required in the current manual of survey instructions of the United States Department of the Interior, Bureau of Land Management or by a decree of a Court of Law and/or that the corner points mentioned in lines 3, 4 and 5 above were in conformance with the rules of the Michigan Board of Land Surveyors or by a Decree of a Court of Law; established, re-established, monumented, recovered, found as expressed below:

NOTE: Not more than 2 corners, all in the same town and range, may be recorded on this certificate.



A. Description of original monument and accessories and/or subsequent restoration:

Original survey by Austin Burt, D.S. on June 19, 1851. He set a wood post from which:
Sugar 10" S59°W 42 links
Yellow Birch 10" N78°E 5 links
Top of hill, descend ledge 20' - 4.28 chains south.
Foot of ledge 3.28 chains south, descend ledge 8', 4 chains west.

B. Description of corner evidence found and/or method applied in restoring or reestablishing corner:

I positioned the corner at the intersection of ancient fence lines running north, south, east and west. This location checks very well with the GLO calls west to ledge (264') and south 216.48' to foot of ledge. I monumented this location as the best representation of the original position.

(Research on file)

PEER GROUP APPROVED
Richard R. Dahn 12/1/97
COURT REGISTRAR

C. Description of monument for corner and accessories established to perpetuate locating the position of the corner:

I set a 2 1/2" dia, x 30" long alum. pipe with a 3 1/4" dia. alum. cap stamped to identify the corner, from which:

7" Sugar	N05°W	24.17 feet
11" Sugar	S55°E	22.38 feet
6" W. Ash	S89°W	22.61 feet
6" Sugar	N30°W	40.23 feet
Steel Sign Post	NELY	1.08 feet

Signed by John R. Garske
Surveyor's Michigan License No. 28410

Date 11/26/97

