

SURVEY & REMONUMENTATION

OCT 9 1996

COMMISSION

LAND CORNER RECORDATION CERTIFICATE
Filing Requirement of Act 74, Mich. P.A. 1970

Register's Office
 Gogebic County ss.

For corners in Gogebic (County) Located In: _____ Corner Code # _____

1. Public Land Survey T 47N R 46W _____
 Section 22 T _____ R _____
 T _____ R _____
 T _____ R _____

2. Property Controlling S _____ T _____ R _____
 in Section S _____ T _____ R _____

3. Miscellaneous S _____ T _____ R _____
 Property in Section S _____ T _____ R _____

4. Lot No. _____, Recorded Plat _____

5. Private Claims _____

Received for record the
16th day of August
 A. D. 1996 at 11:10 o'clock
A m., and recorded in
 Liber 6 of CORNERS
 on page 23
Ramona Collins Deery
 Register of Deeds

Register of Deeds Stamp & File Number

Section corner to Sections 22, 23, 26, & 27, T47N, R46W.

I, John R. Garske, in a field survey on June 25, 1996, do hereby certify that under requirements of P.A. 74, Michigan P.A. of 1970, the corner points mentioned in lines 1 and 2 above were in conformance with regulations and rules therefore as required in the current manual of survey instructions of the United States Department of the Interior, Bureau of Land Management or by a decree of a Court of Law and/or that the corner points mentioned in lines 3, 4 and 5 above were in conformance with the rules of the Michigan Board of Professional Surveyors or by a Decree of a Court of Law; established, re-established, monumented, re-monumented, recovered, found as expressed below:

| | | | | | | | | | | | | |
|----|----|----|----|----|----|----|---|---|---|---|---|---|
| A | B | C | D | E | F | G | H | I | J | K | L | M |
| 2 | 6 | 5 | 4 | 3 | 2 | 1 | | | | | | |
| 3 | | | | | | | | | | | | |
| 4 | 7 | 8 | 9 | 10 | 11 | 12 | | | | | | |
| 5 | | | | | | | | | | | | |
| 6 | 18 | 17 | 16 | 15 | 14 | 13 | | | | | | |
| 7 | | | | | | | | | | | | |
| 8 | 19 | 20 | 21 | 22 | 23 | 24 | | | | | | |
| 9 | | | | | | | | | | | | |
| 10 | 30 | 29 | 28 | 27 | 26 | 25 | | | | | | |
| 11 | | | | | | | | | | | | |
| 12 | 31 | 32 | 33 | 34 | 35 | 36 | | | | | | |
| 13 | | | | | | | | | | | | |

NOTE: Not more than 4 corners, all in the same town and range, may be recorded on this certificate.

A. Description of original monument and accessories and/or subsequent restoration:

- Original survey by Austin Burt, D.S., in 1851. He set a wood post from which: 14" Fir - S81°W - 9 links and 16" B. Ash - N58°E - 23 links.
- Gogebic County Road Commission notes indicate corner in place in 1921.

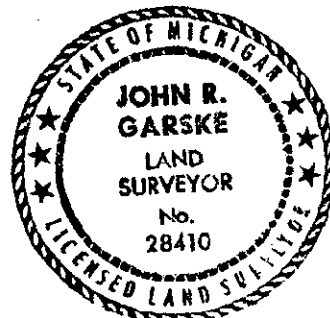
B. Description of corner evidence found and/or method applied in restoring or reestablishing corner:

I found a smashed 2" diameter iron pipe at the intersection of Harding Road and Black River Lane with an old fence line running north from the pipe. I am accepting the iron pipe as the section corner as it sets in the most logical position and fits well with local occupation lines. Measurements to corners east, west and south check reasonably well.

Record research on file.

(See sketch on back)

I updated the corner position to state and county specifications as noted below.



C. Description of monument for corner and accessories established to perpetuate locating the position of the corner:

I replaced the found 2" iron pipe a 5/8"x 24" rebar capped with a 3 1/4" diameter brass cap stamped to read: T47N, R46W; 22, 23, 26, & 27, 1995, RLS 28410, 0.15' below the surface of the road from which I established the following bearing trees and reference objects:

- Telephone pole-S49°E-43.18 feet
- Power Pole-N26°E-32.15 feet
- 8" Maple-N50°W-54.93 feet

Reference monument consisting of a 2 1/2" diameter x 30" long aluminum pipe with a 3 1/4" diameter aluminum cap stamped: County Remonumentation; T47N, R46W, R.M., 22, 23, 26, & 27, 1996, RLS 28410, N61°E, 59.96 feet; with a six foot steel rail with a sign-1.40 feet away.

PEER GROUP APPROVAL
Richard P. Decker 8/14/96
 COUNTY REPRESENTATIVE

Signed by John R. Garske
 Surveyor's Michigan License No. 28410

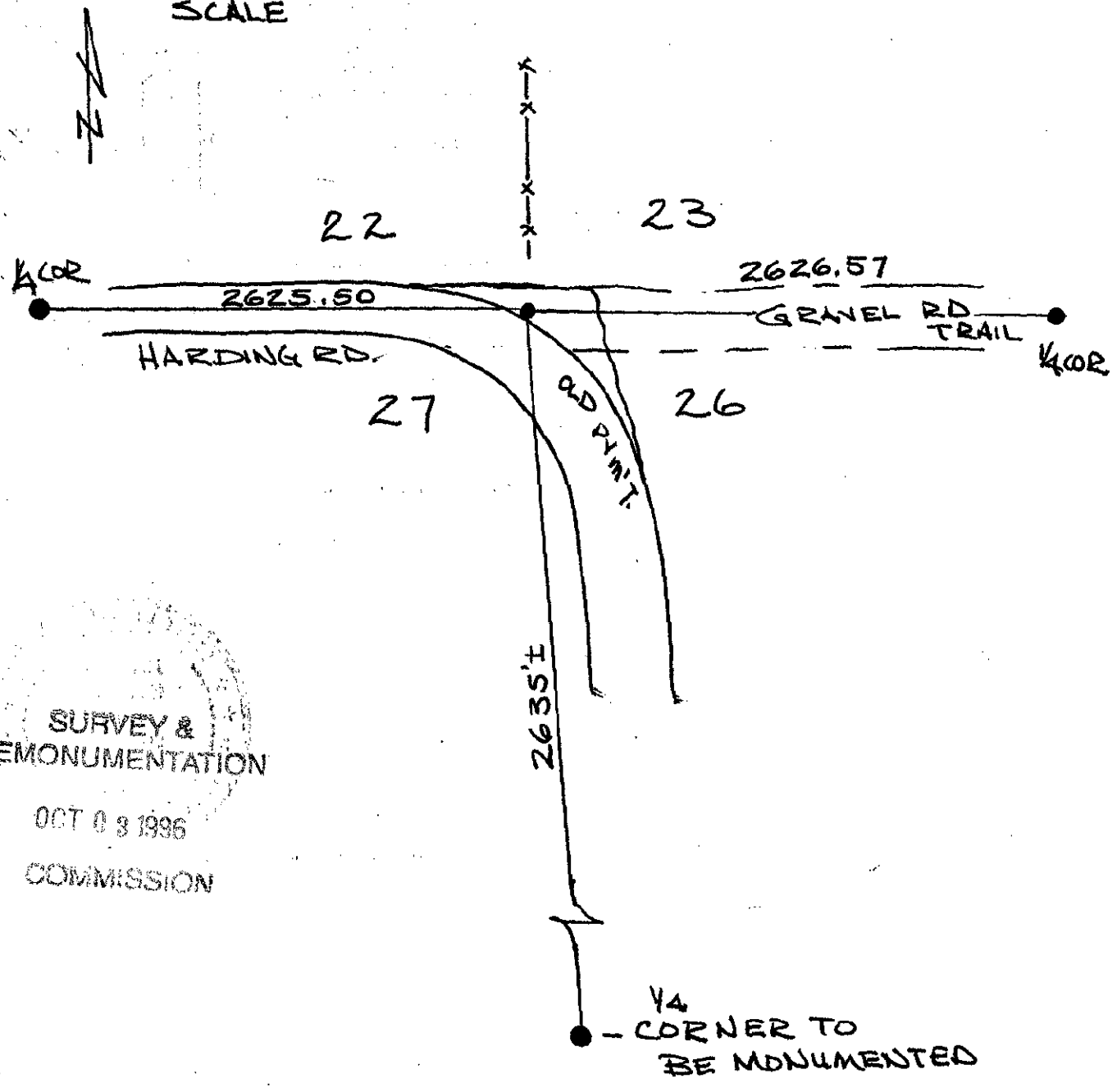
Date 8-9-96

...
...
...
...
...
...
...
...
...

T.47N., R.46W.
I-9

SKETCH!

NOT TO
SCALE



SURVEY &
REMONUMENTATION
OCT 03 1996
COMMISSION